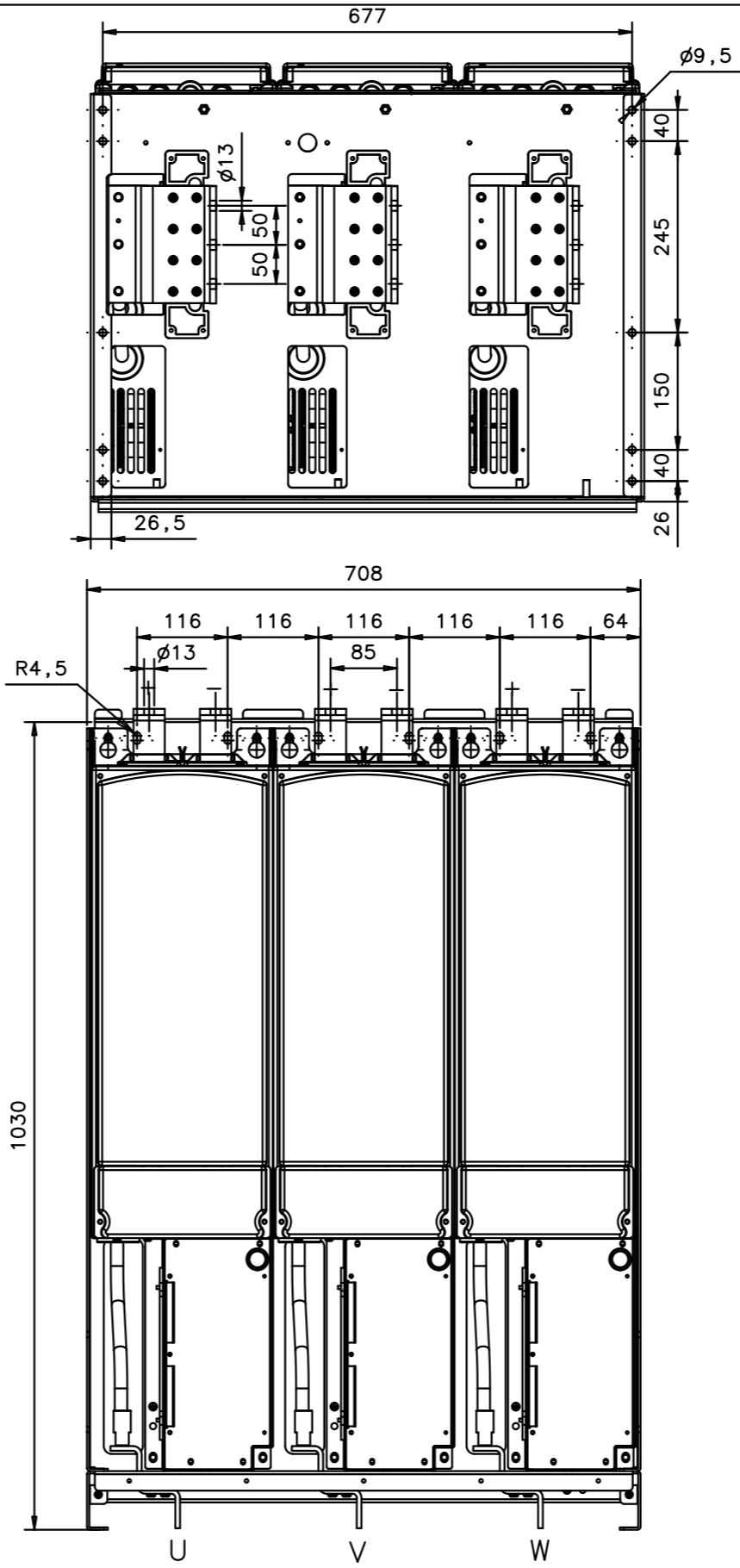
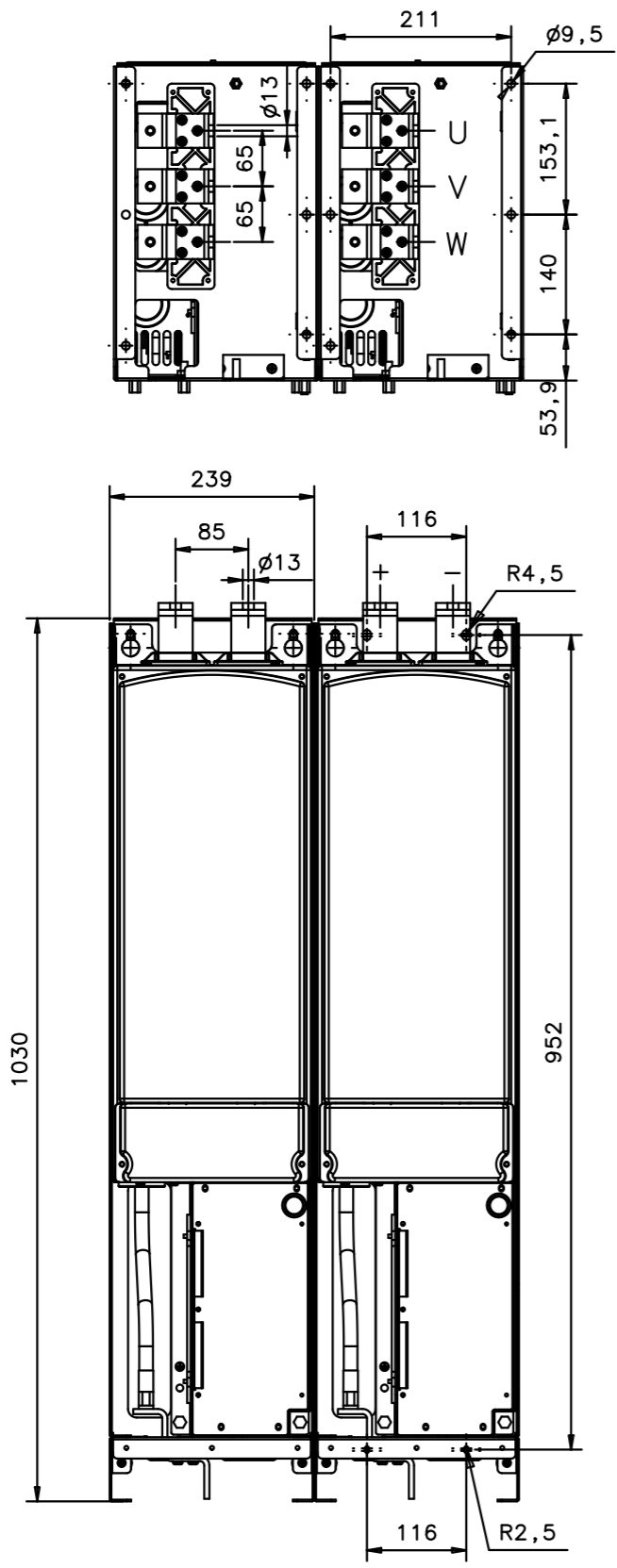


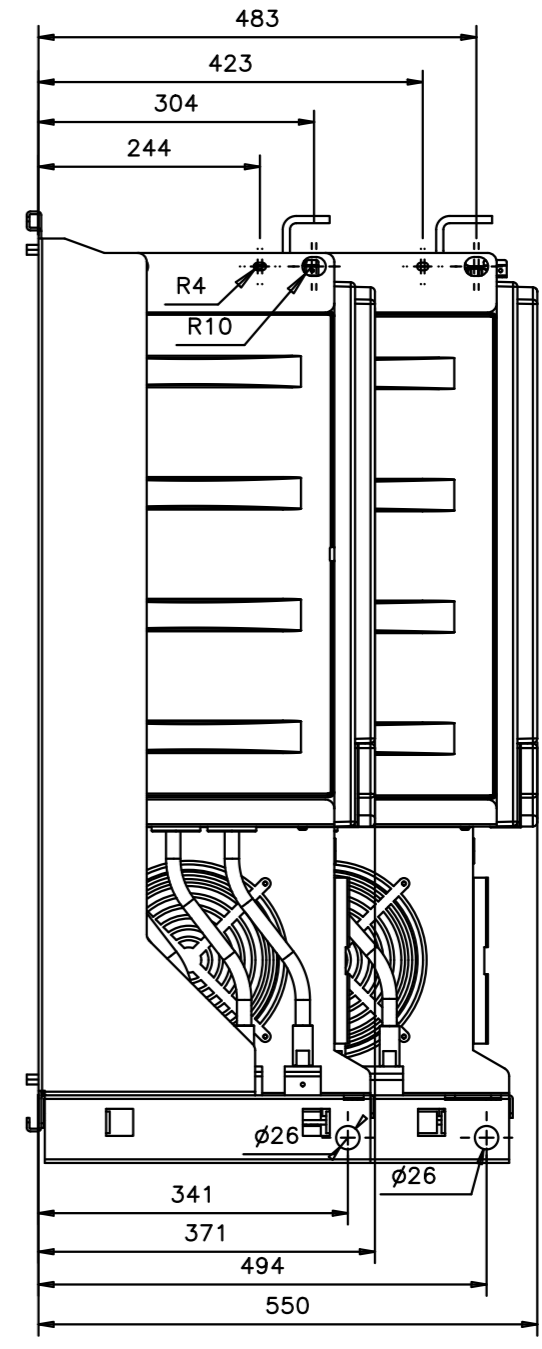
© Reproduction, use or disclosure to third party forbidden. All rights reserved.

REV1
REV2
REV3
REV4
REV5
REV6



NXN (F19) Modules: 2 pcs
 INU (F113) Modules: 1 pcs
 500V / 1150A
 690V / 1180A

For more detailed dimensions see drawings
 FI09900 & FI13901



VAGON

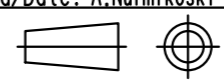
Material:
 Finishing:

Product: FR13
 Name: Dimensional drawing
 Add. Info 1: Mass: NXN (F19) 67kg/drive
 Add. Info 2: INU (F113) 302kg/drive

Designer/Date: S.Risku / 03.04.2012
 Approved/Date: A.Nurmikoski

Gen.Tol:
 Scale: -
 Doc. no.
 TED05453

Sheet: A3
 Page: 1/3
 Revision
 A



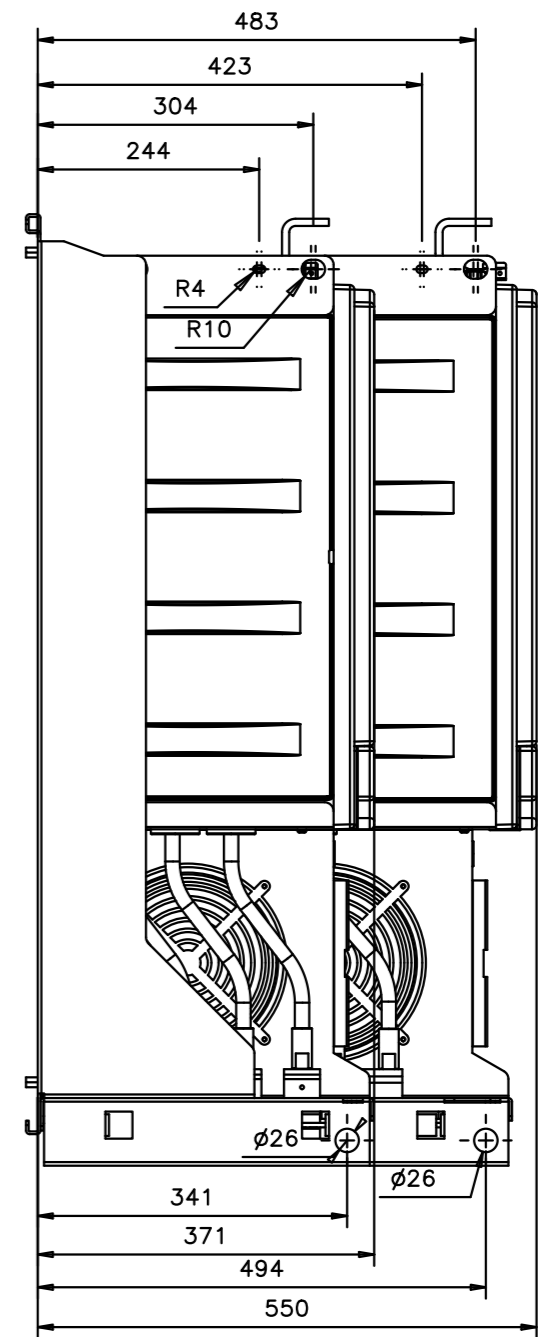
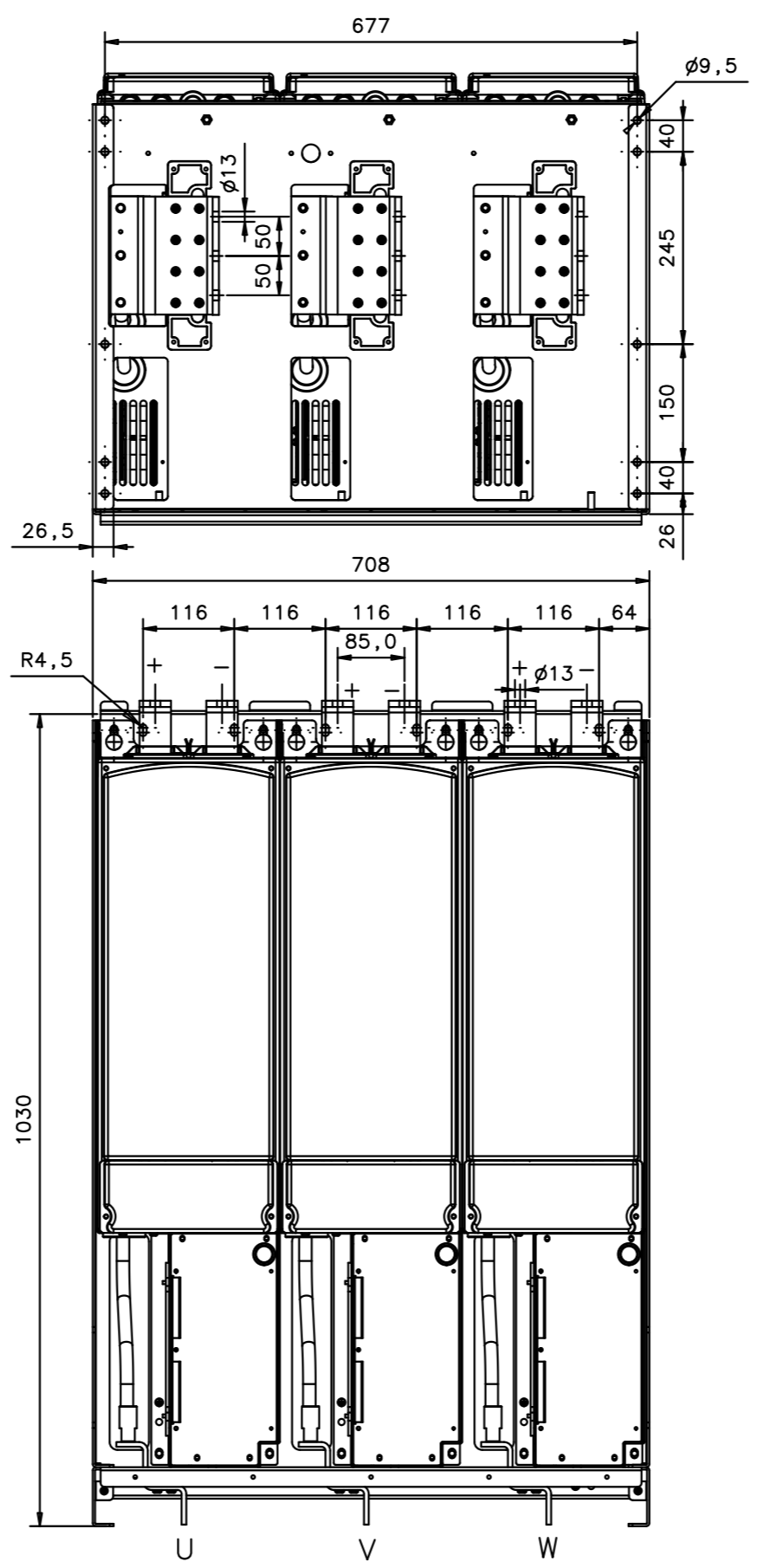
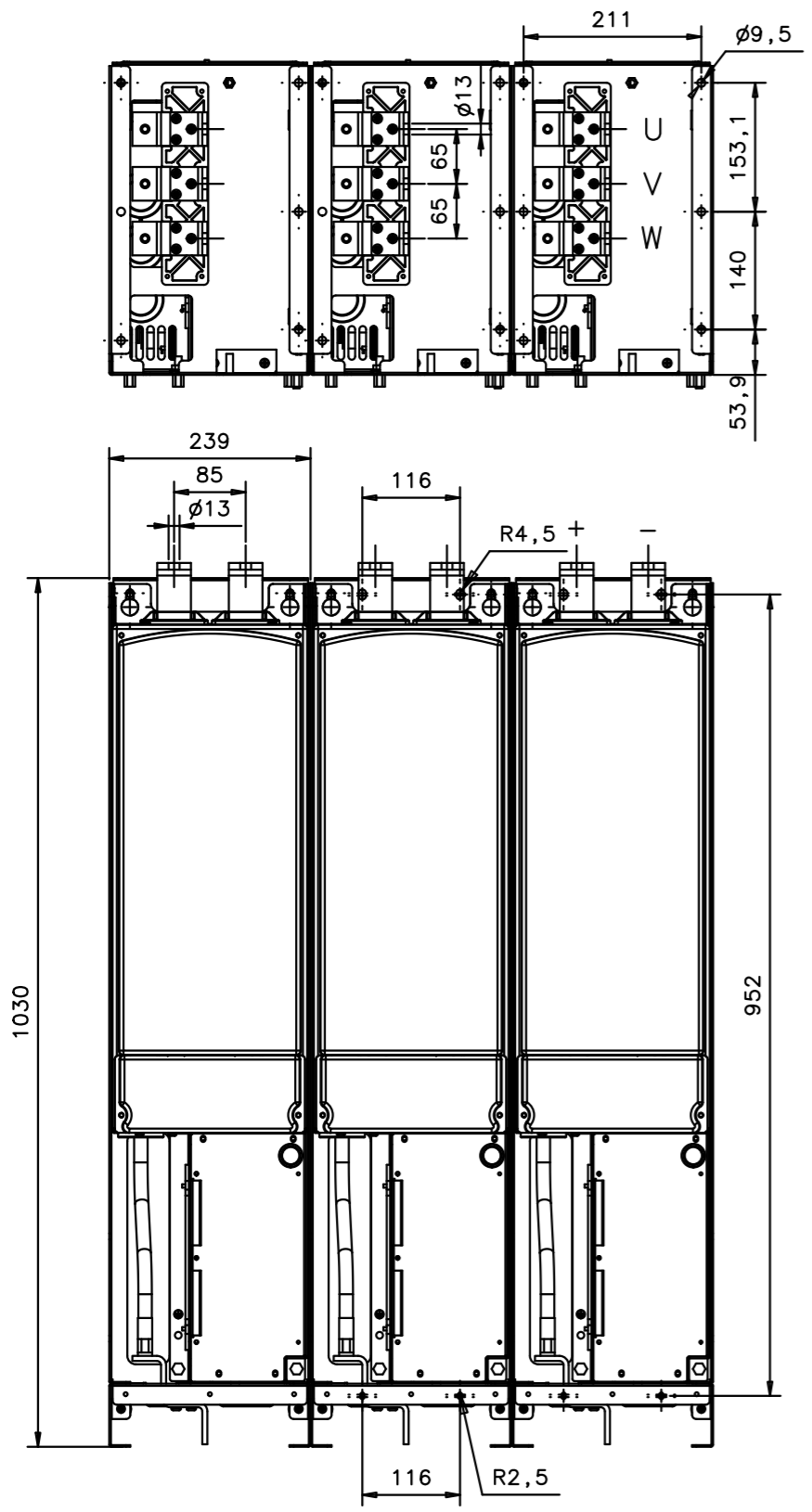
Reproduction, use or disclosure to third party forbidden. All rights reserved.

REV1
REV2
REV3
REV4
REV5
REV6

NXN (F19) Modules: 3 pcs
INU (F113) Modules: 1 pcs

500V / 1300-1450A

For more detailed dimensions see drawings
FI09900 & FI13901



VAGON

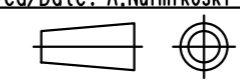
Material:
Finishing:

Product: FR13
Name: Dimensional drawing
Add. Info 1: Mass: NXN (F19) 67kg/drive
Add. Info 2: INU (F113) 302kg/drive

Designer/Date: S.Risku / 03.04.2012
Approved/Date: A.Nurmikoski

Gen.Tol:
Scale: -
Doc. no. TED05453

Sheet: A3
Page: 2/3
Revision A



© Reproduction, use or disclosure to third party forbidden. All rights reserved.

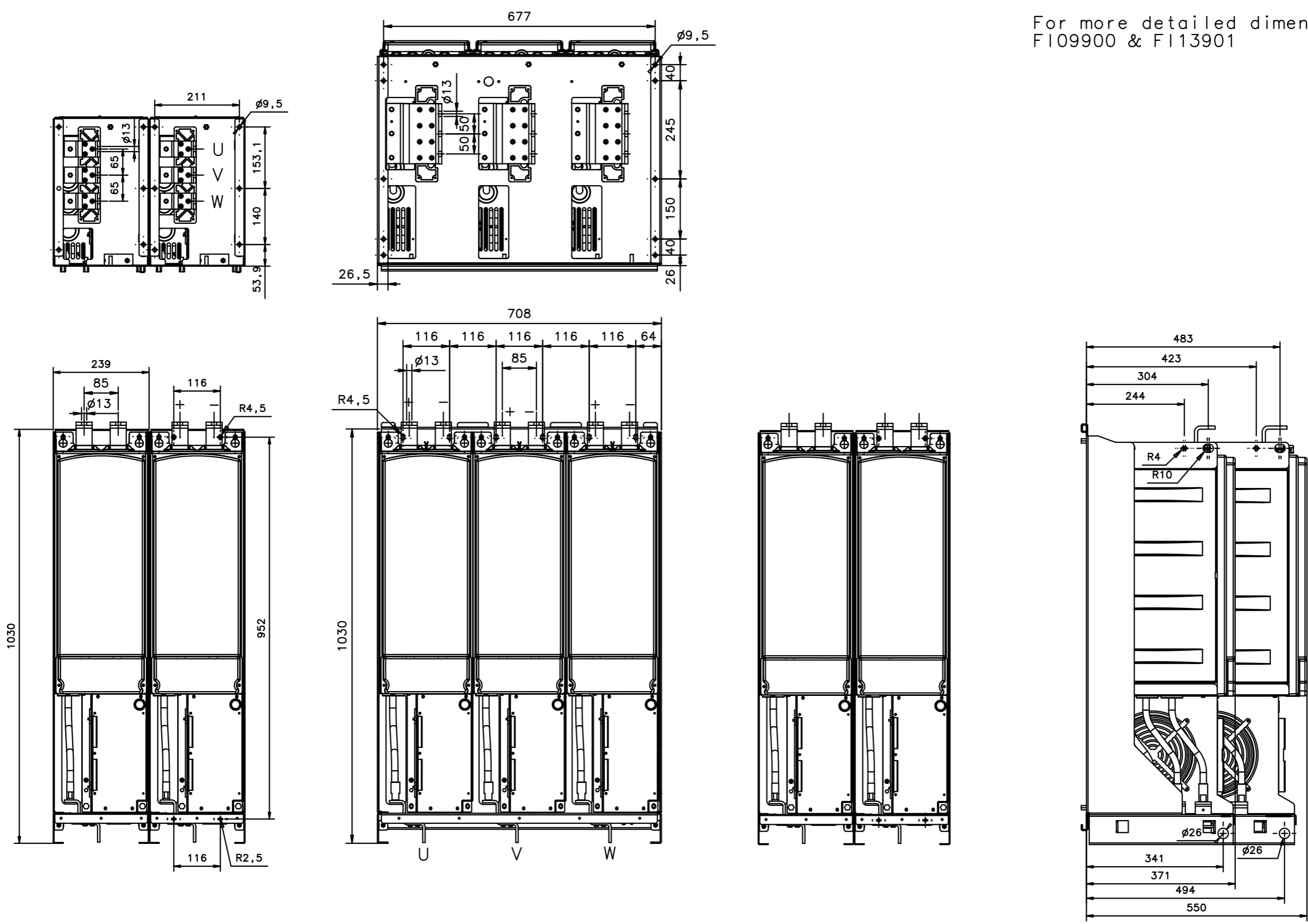
REV1
REV2
REV3
REV4
REV5
REV6

FR13 12-p

NXN (F19) Modules: 2+2 pcs
INU (F113) Modules: 1 pcs

500V / 1300-1450A

For more detailed dimensions see drawings
F109900 & F113901



VAGON

Material:
Finishing:

Product: FR13
Name: Dimensional drawing
Add. Info 1: Mass: NXN (F19) 67kg/drive
Add. Info 2: INU (F113) 302kg/drive

Designer/Date: S.Risku / 03.04.2012
Approved/Date: A.Nurmikoski

Gen.Tol:
Scale: -
Doc. no.
TED05453

Sheet: A3
Page: 3/3
Revision
A

