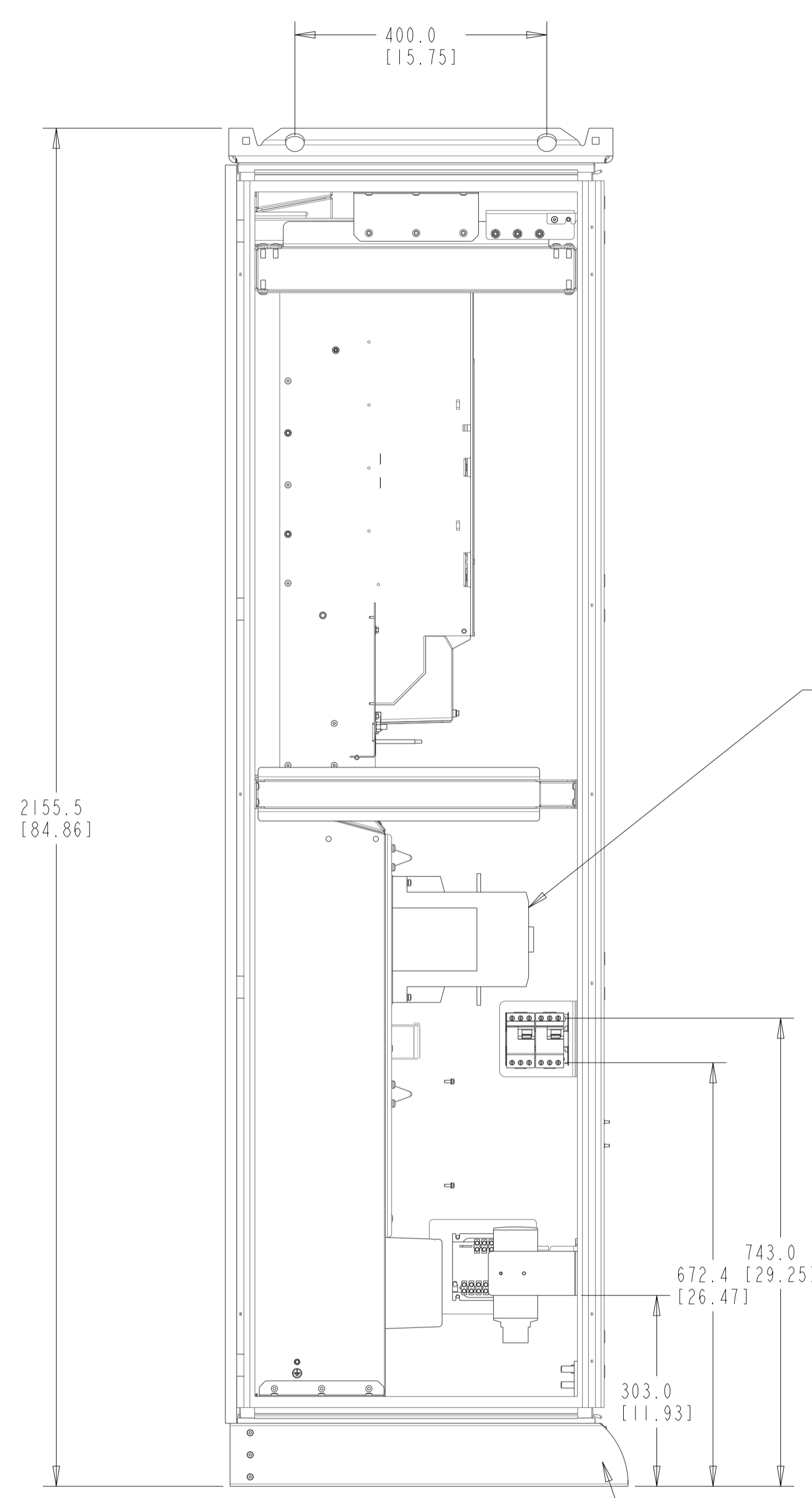


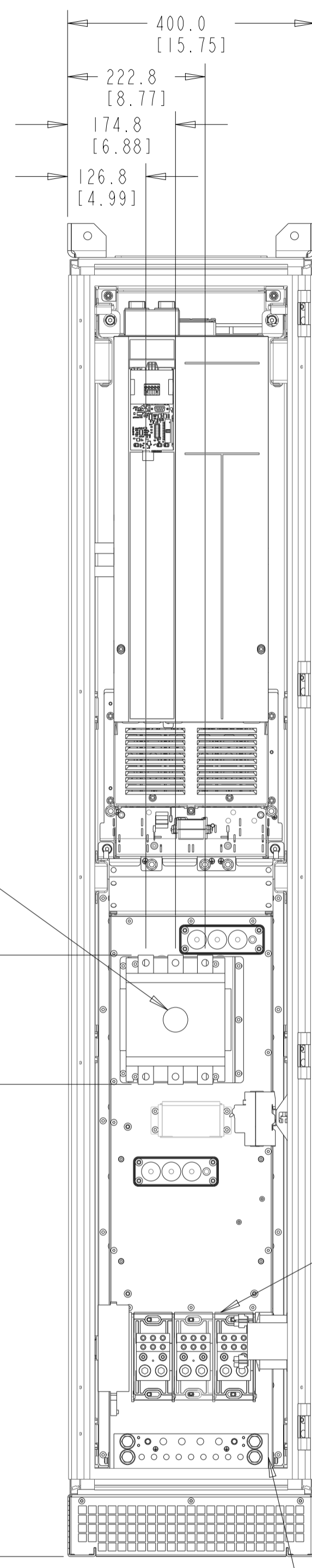
INTERNAL CABLES ARE HIDDEN  
IN THE DRAWING FOR BETTER CLARITY

CONTROL COMPARTMENT DOOR  
IS NOT SHOWN IN THE DRAWING  
FOR SHOWING INTERNAL COMPONENTS



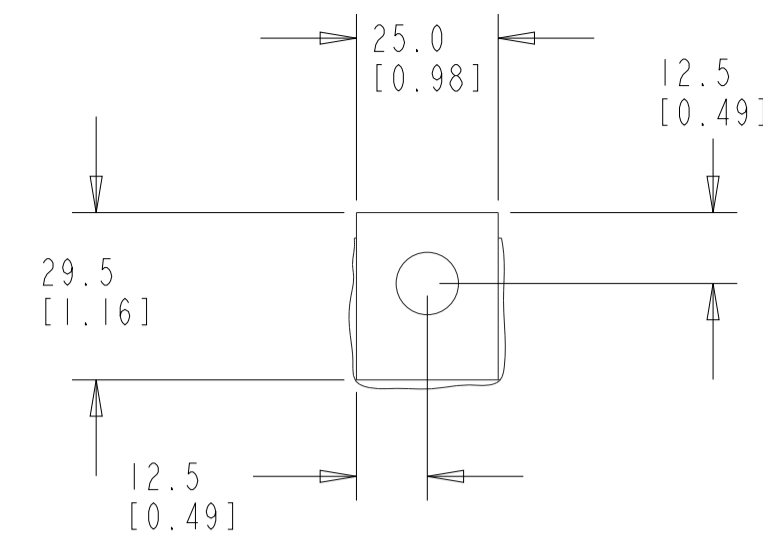
MAINS TERMINAL

REFER NOTE 3

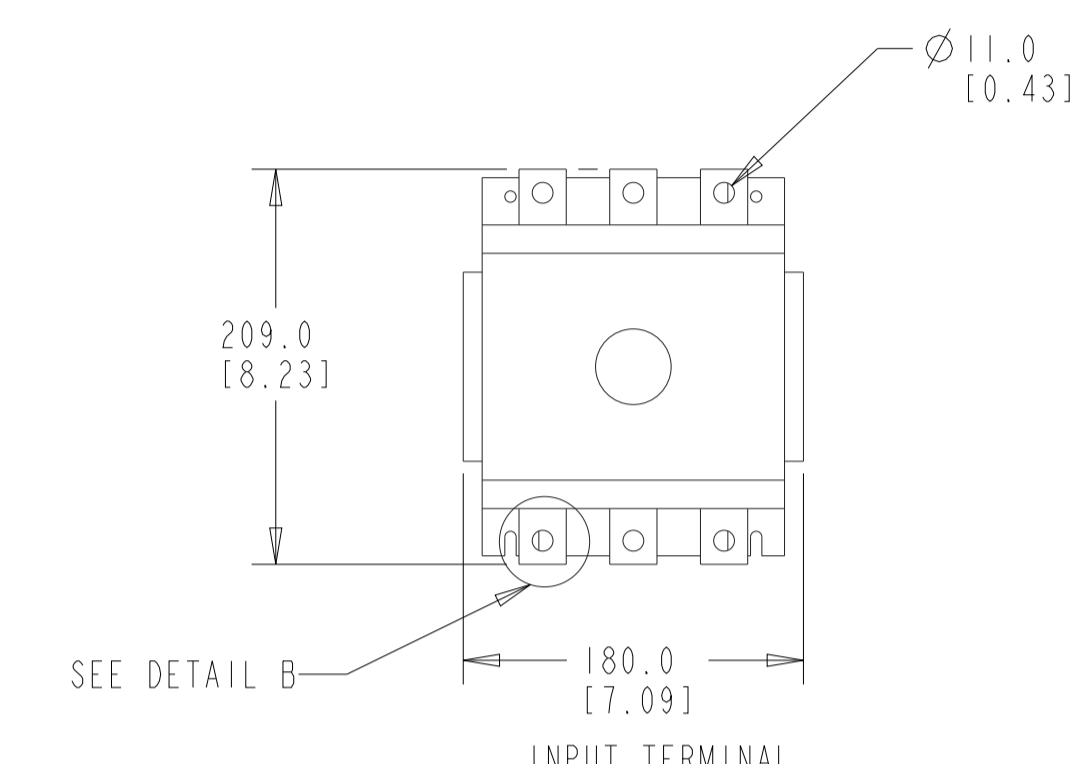


MOTOR TERMINAL

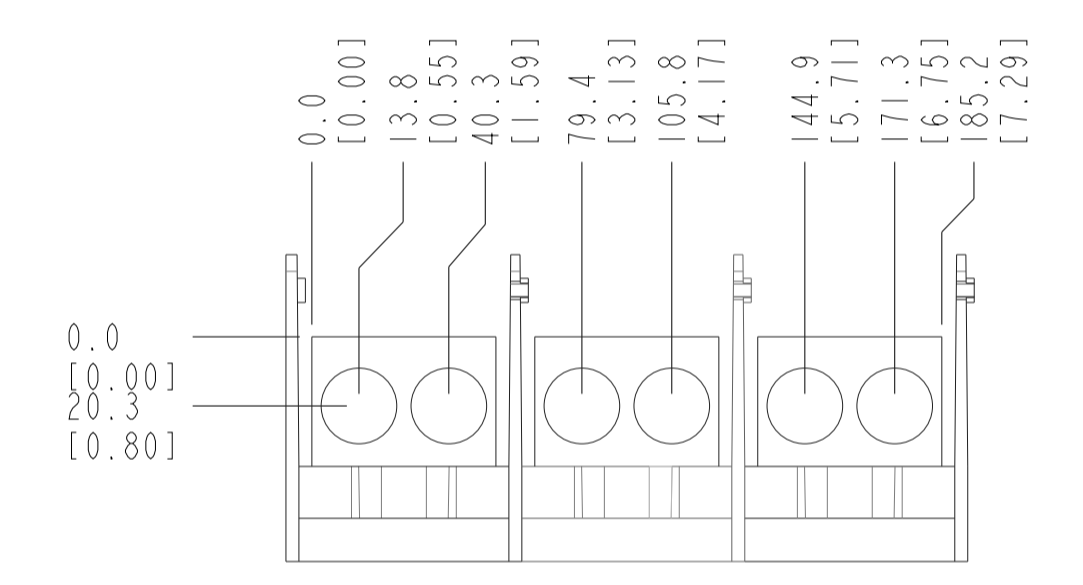
GROUNDING TERMINAL



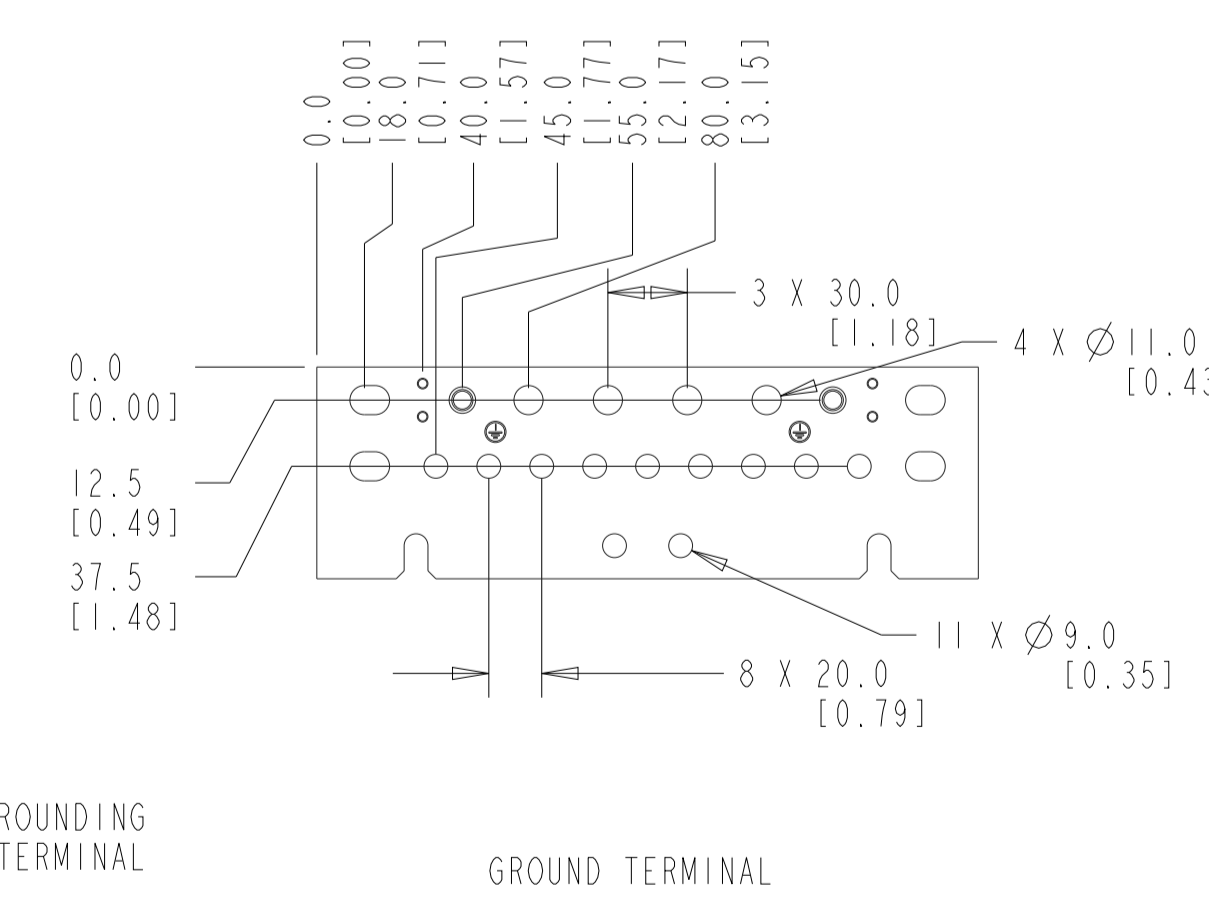
DETAIL B  
SCALE 0.750



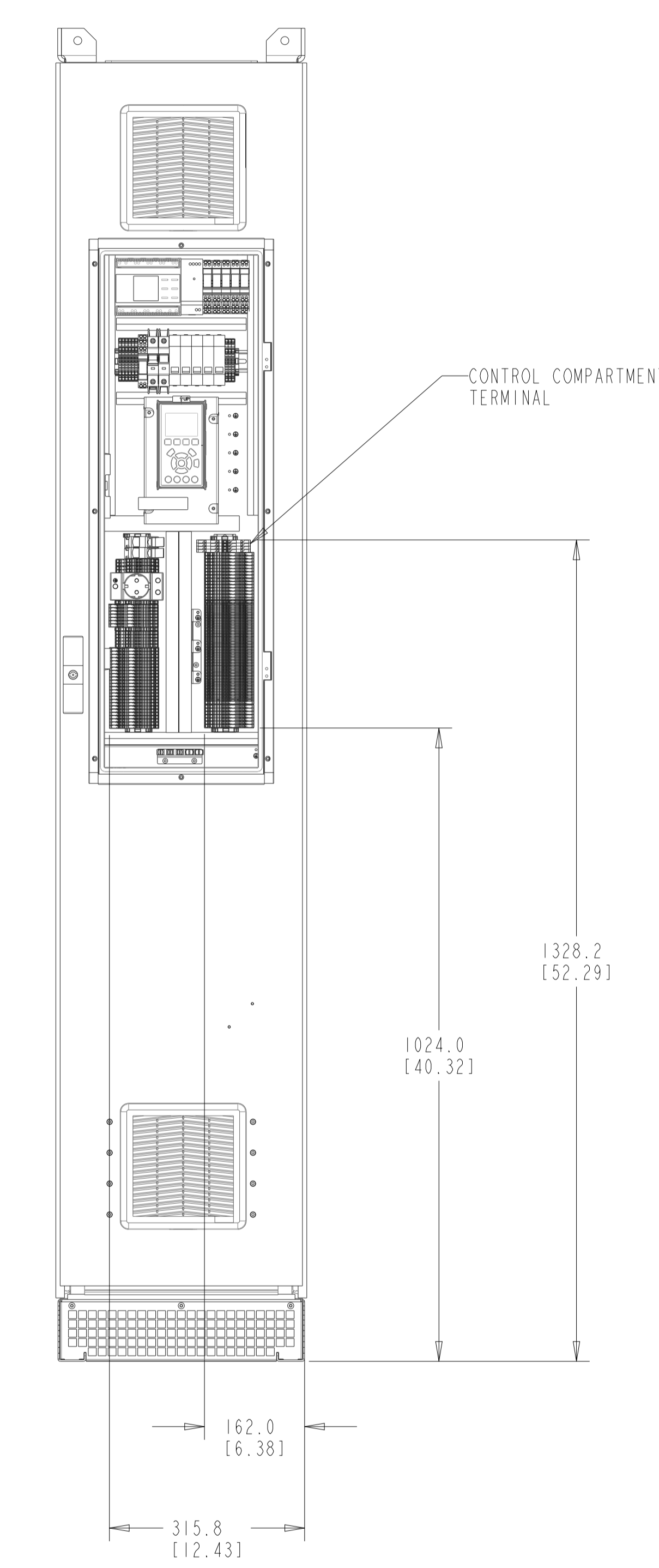
INPUT TERMINAL



BOTTOM VIEW OF MOTOR TERMINAL



GROUND TERMINAL

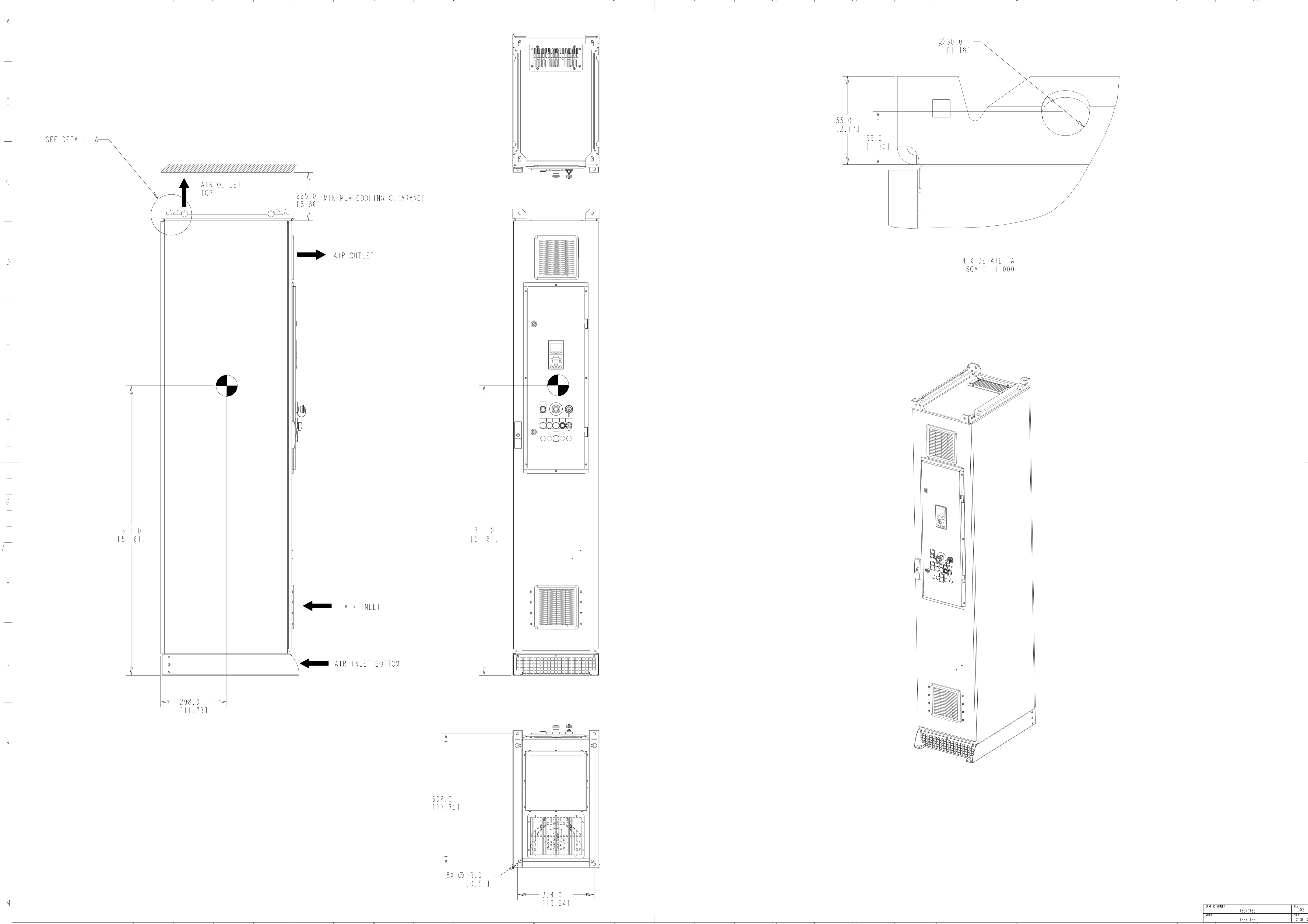


CONTROL COMPARTMENT  
TERMINAL

CRITICAL CHARACTERISTICS  
KEY CHARACTERISTICS  
INSPECTION  
MUST COMPLY TO ROHS DIRECTIVE 2011/65/EU

NOTE:  
1. BACK CHANNEL COOLING: BOTTOM IN TOP OUT  
2. CABLE FEED: BOTTOM ENTRY & BOTTOM OUT  
3. PLINTH HEIGHT CAN BE OF 100, 200, & 400mm HEIGHT.

INTERPRET DIM. & TOL. PER ASME Y14.5M-1994 ALL DIMENSIONS ARE IN MILLIMETERS TOLERANCES UNLESS OTHERWISE SPECIFIED ±0.10 ±0.50 ±1.0		THIRD ANGLE PROJECTION	SCALE 0.150	SIZE A1	MATERIAL	
— PDM CONTROLLED DRAWING — NOT VALID WITHOUT FROZEN DATE IN ID STAMP				FINISH		
CHANGED	SABARISH			MAY-16-19	DESCRIPTION	
DESIGNED	Louvi			FEB-22-19	MCAD-PLV-D9H-IP54 -CON-DVDT-CM	
CHECKED				TECHNICAL NUMBER	REV	
CONFIDENTIAL - PROPERTY OF DANFOSS A/S NORBORG, DENMARK. NOT TO BE HANDED OVER TO BE COPIED OR BE USED BY A THIRD PARTY. TWO OR THREE DIMENSIONAL REPRODUCTION OF CONTENTS TO BE AUTHORIZED BY DANFOSS A/S.				132R0182	002	
				132R0182	SHEET 1 OF 3	



SEE DETAIL A

AIR OUTLET TOP

225.0 [8.86] MINIMUM COOLING CLEARANCE

AIR OUTLET

AIR INLET

AIR INLET BOTTOM

Ø 30.0 [1.18]

55.0 [2.17]

33.0 [1.30]

4 X DETAIL A  
SCALE 1.000

1311.0 [51.61]

298.0 [11.73]

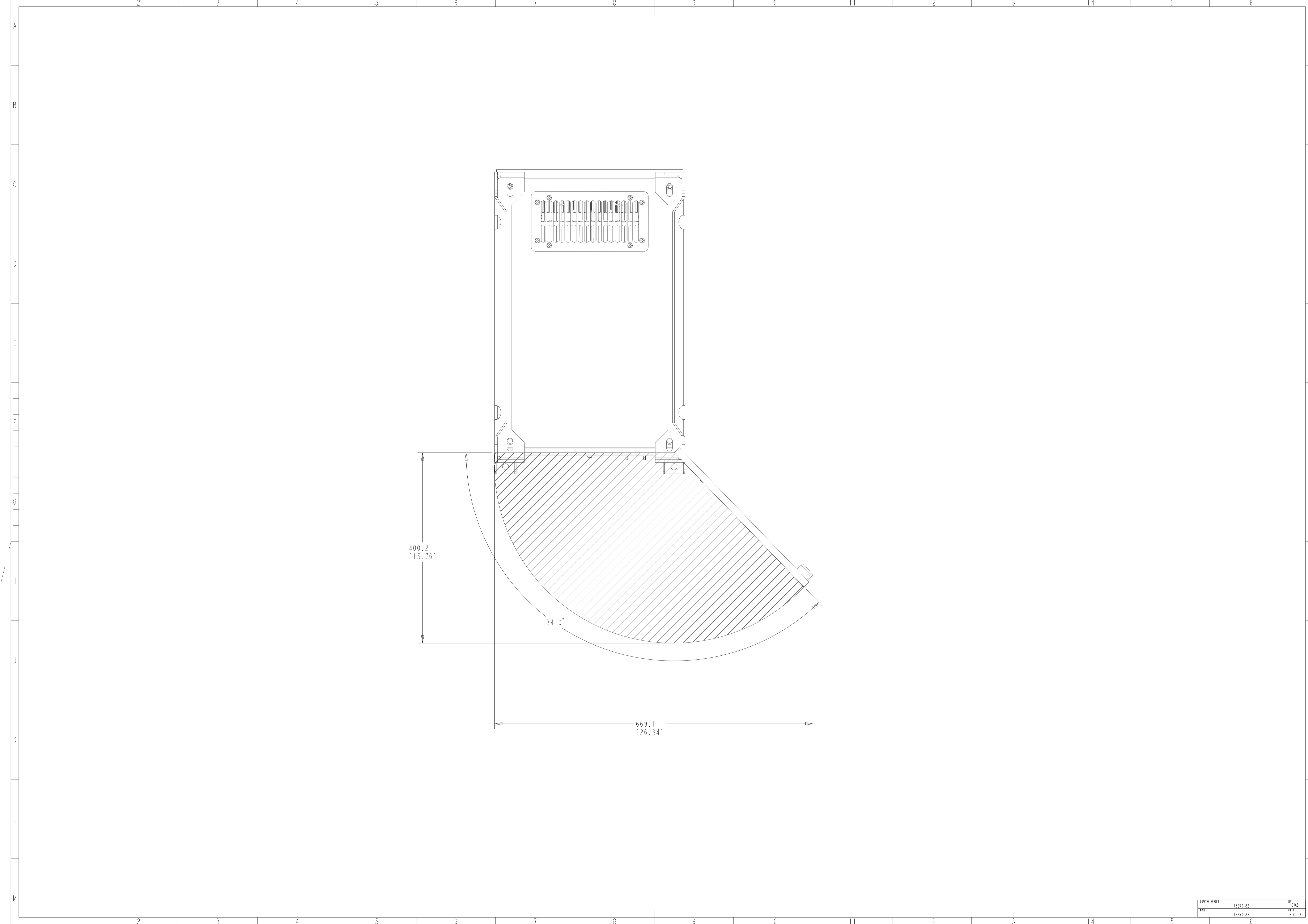
1311.0 [51.61]

602.0 [23.70]

8X Ø 13.0 [0.51]

354.0 [13.94]

STANDARD NUMBER	132R0182	REV	002
WORK	132R0182	SHEET	2 OF 3



DATE	NO.	REV.
132R0182	002	
132R0182	002	3 OF 3