

additional informations:
 filter colour : impregnated
 filter weight : 485kg

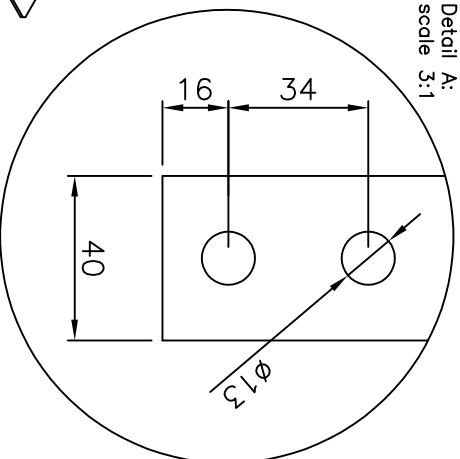
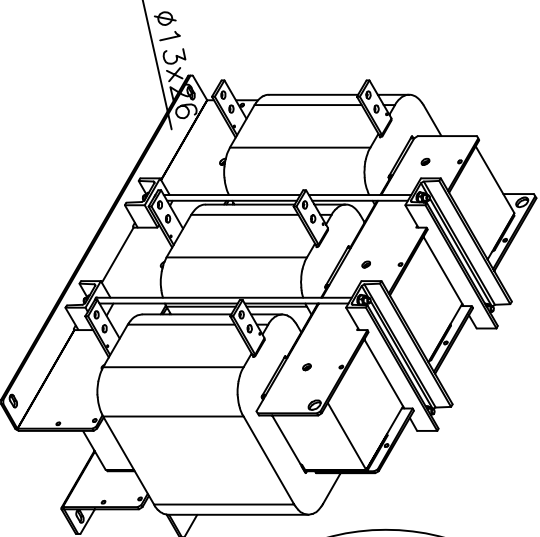
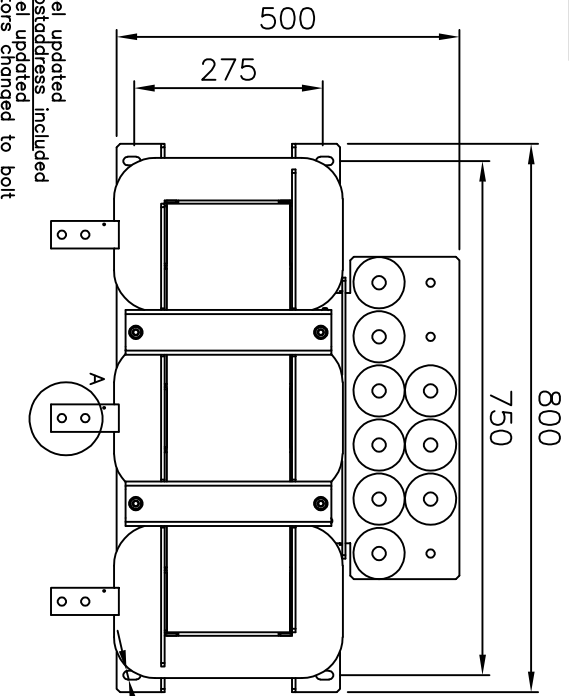
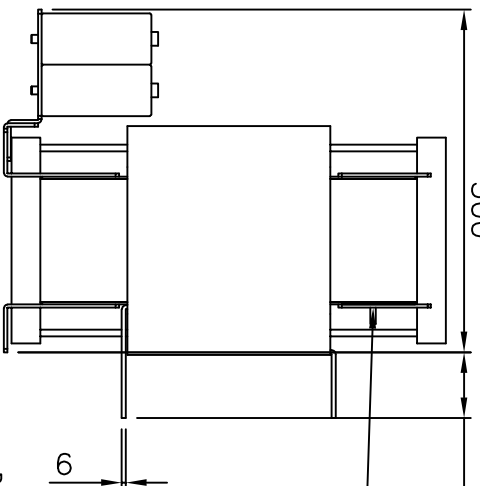
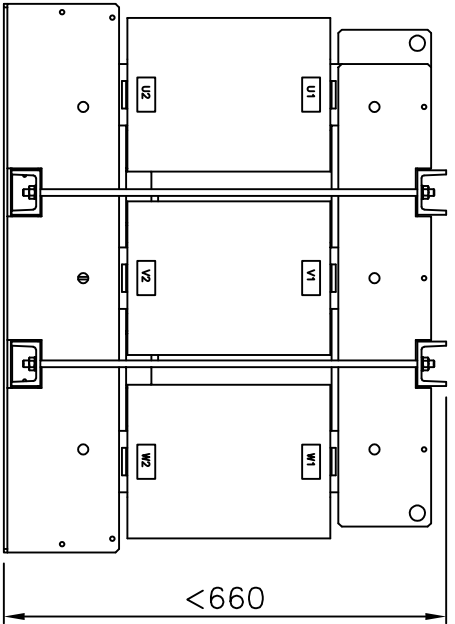
Label:

VLT MCC-101 sine wave FILTER
 www.dantoss.com

Business 443 3431 Neudorf, Germany
 77C MCC101B43017E01B S/N: A001-09-199
 77V 12000V 50/60Hz max. 100kVA
 77S 12000V 50/60Hz max. 100kVA
 3x 430A @50Hz 407A @60Hz 333A @ 0Hz
 Class: IP00 Term: 65°C/119°F Weight: 485kg
 Terminal: 30/11

130B4152A004152
 Use only with a type 2 SPD overvoltage control device

EN 50522
 EN 602057
 EN 61558
 EN 61851
 EN 61853
 EN 61854
 EN 61855
 EN 61856
 EN 61857
 EN 61858
 EN 61859
 EN 61860
 EN 61861
 EN 61862
 EN 61863
 EN 61864
 EN 61865
 EN 61866
 EN 61867
 EN 61868
 EN 61869
 EN 61870
 EN 61871
 EN 61872
 EN 61873
 EN 61874
 EN 61875
 EN 61876
 EN 61877
 EN 61878
 EN 61879
 EN 61880
 EN 61881
 EN 61882
 EN 61883
 EN 61884
 EN 61885
 EN 61886
 EN 61887
 EN 61888
 EN 61889
 EN 61890
 EN 61891
 EN 61892
 EN 61893
 EN 61894
 EN 61895
 EN 61896
 EN 61897
 EN 61898
 EN 61899
 EN 61900



Detail A:
 scale 3:1

max. 110
 PE bolt M10
 (2x washer, 1 lock washer, 1 nut)

| | | |
|------------|------------|--|
| d 09.05.16 | Schr./Fie. | typelabel updated |
| c 22.12.14 | Schr./Fie. | Dantoss Postaddress included typelabel updated |
| b 11.03.13 | Schr./Kor. | cap. connectors changed to bolt typelabel updated |
| a 01.10.10 | KOR/ Lauer | approval added |
| | date | name |
| | | amendment |

| | |
|---|---|
| Dimensions toleranced according to ISO 2768-m | |
| Tolerance class | from 3 to 30 from 6 to 30 from 30 to 120 from 120 to 400 from 400 to 1000 |
| m (middle) | ±0.1 ±0.1 ±0.2 ±0.3 ±0.5 ±0.8 |

| | | | | |
|---------|----------|--------|-----------|--------------|
| drawn | 06.05.10 | Kornau | Kornau | scale |
| checked | 06.05.10 | Bremer | Bremer | format |
| | date | name | signature | A4 |
| | | | | DIN ISO 5456 |

Dimensions B 1002057
 sine-wave filter 690V 430A – IP00

| | | | | | | | |
|---|----------|----------------|------------|-------|---|-------|-----|
| order number | 130B4152 | drawing number | Z791004017 | modi. | d | sheet | 1/1 |
| Please observe protection clause to ISO 16016 | | | | | | | |

1 2 3 4 5 6 7 8

F E D C B A

1 2 3 4 5 6 7 8

1 2 3 4 5 6 7 8

1 2 3 4 5 6 7 8

1 2 3 4 5 6 7 8

1 2 3 4 5 6 7 8

1 2 3 4 5 6 7 8

1 2 3 4 5 6 7 8

1 2 3 4 5 6 7 8

1 2 3 4 5 6 7 8

1 2 3 4 5 6 7 8