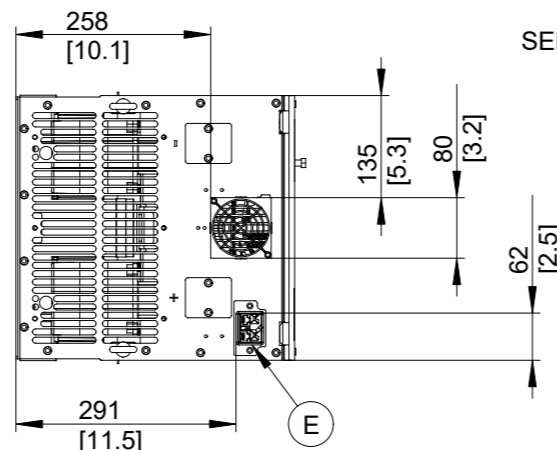
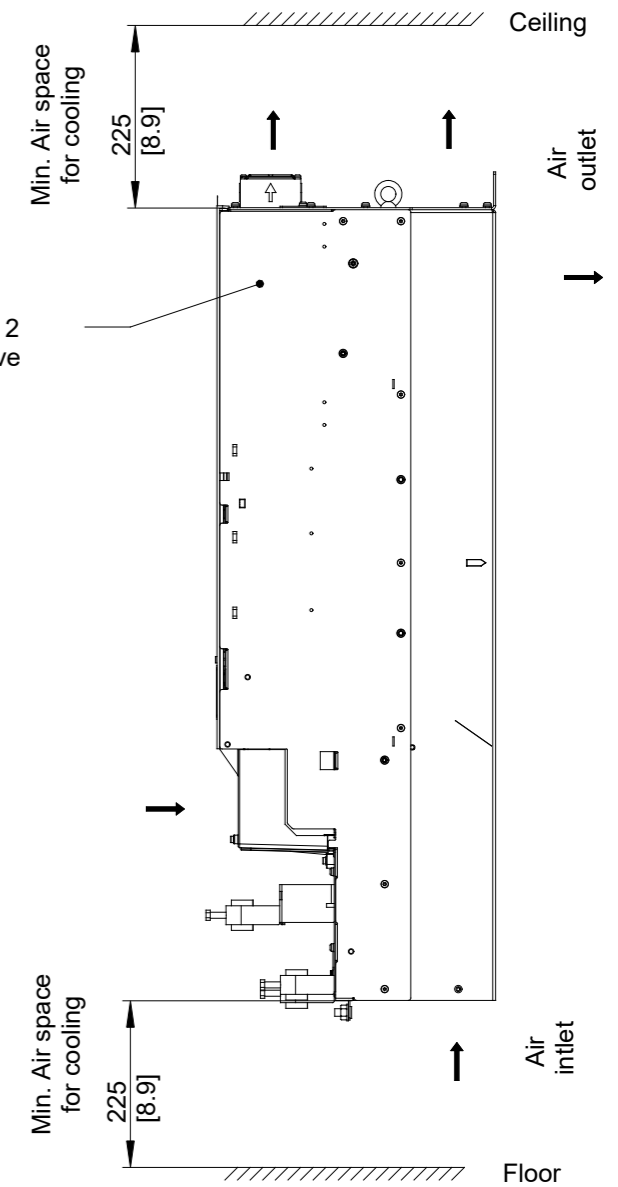
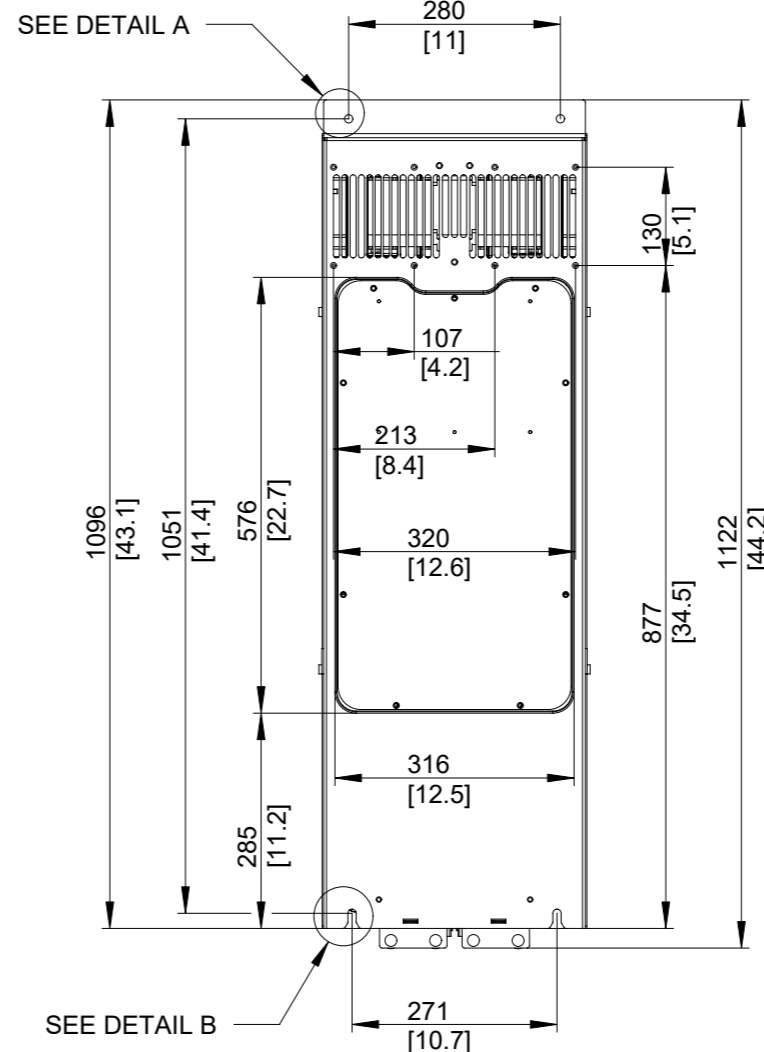
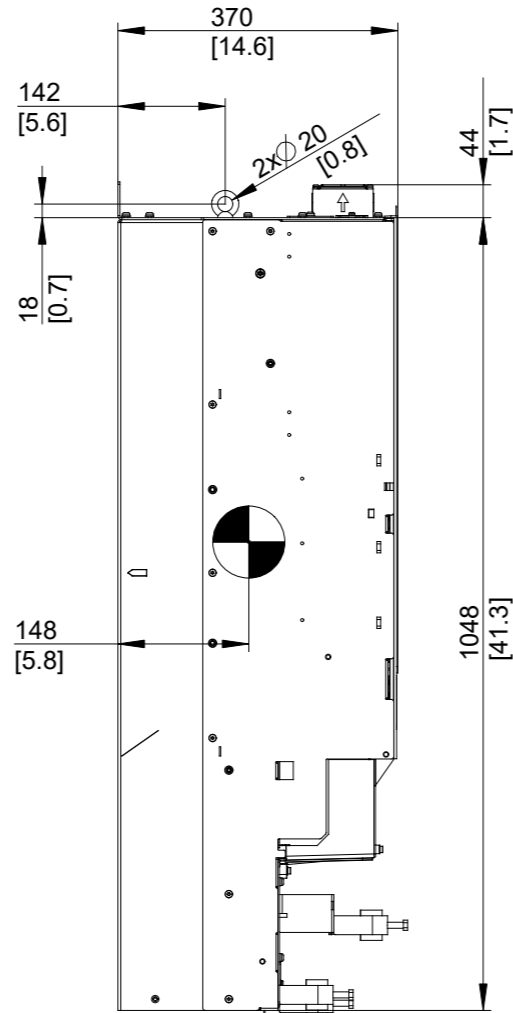
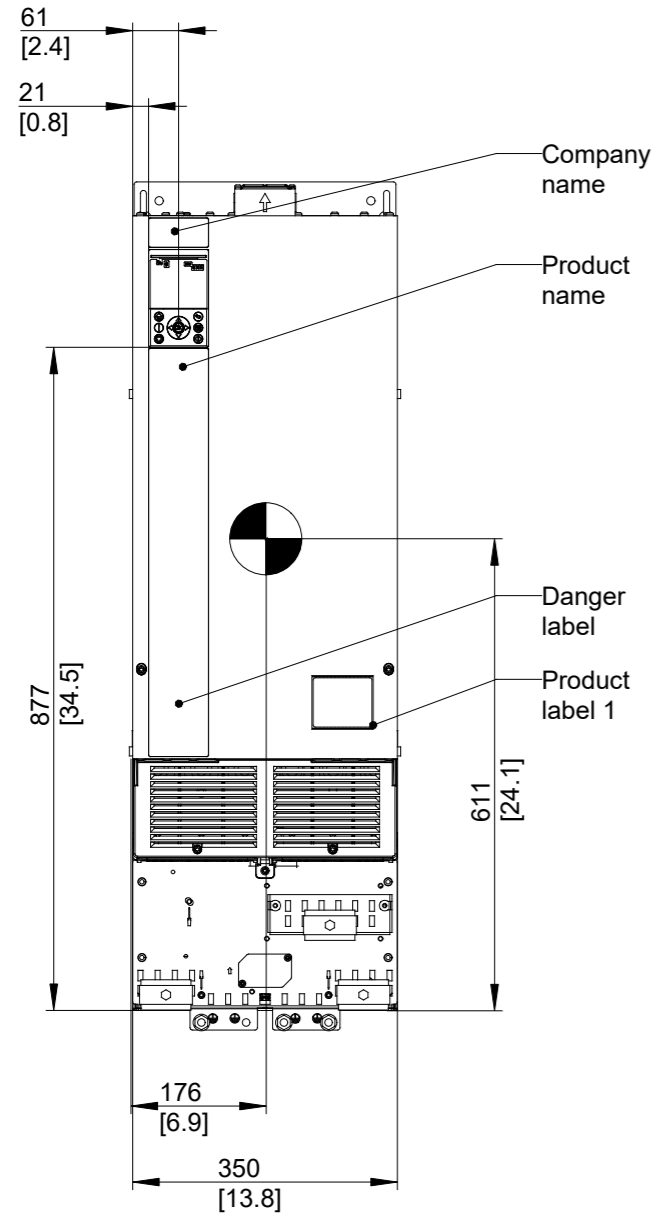
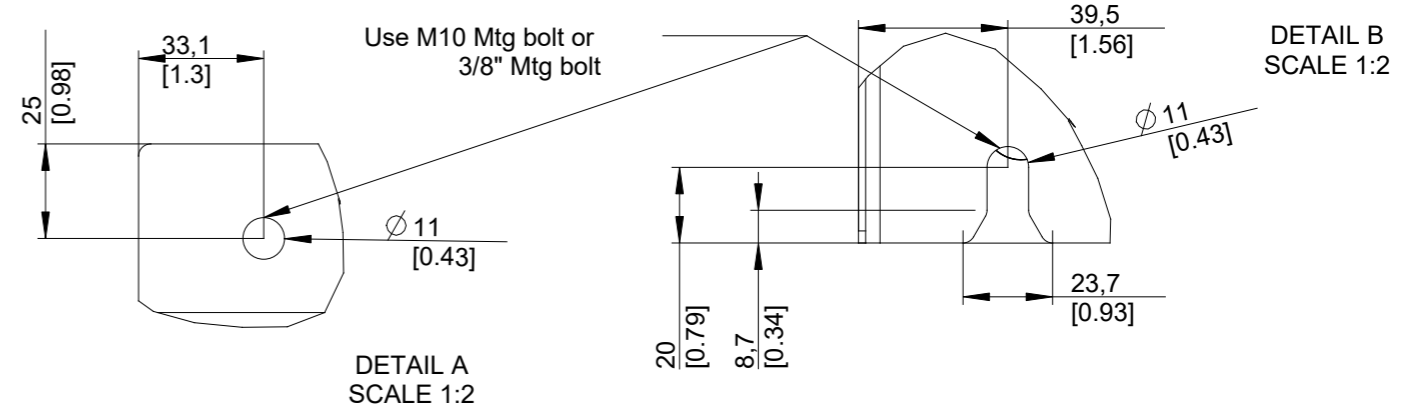
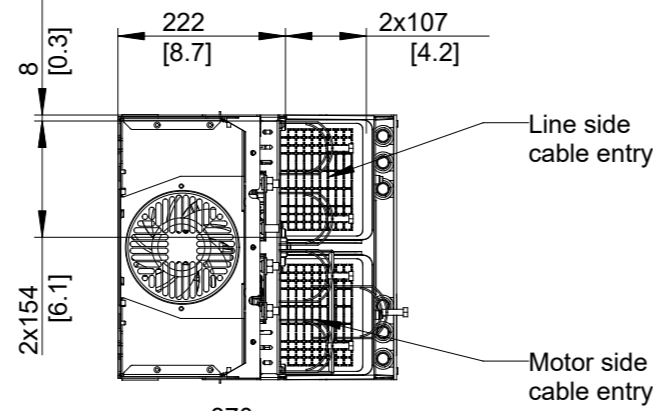


Type	Value
Max Weight	127kg/280lb
IP Class	IP20
UL Type	Open



Position of connectors	
A	Line
B	Motor
C	Brake / DC Terminals
D	Interface X0
E	Interface X1/X2
F	Grounding connections

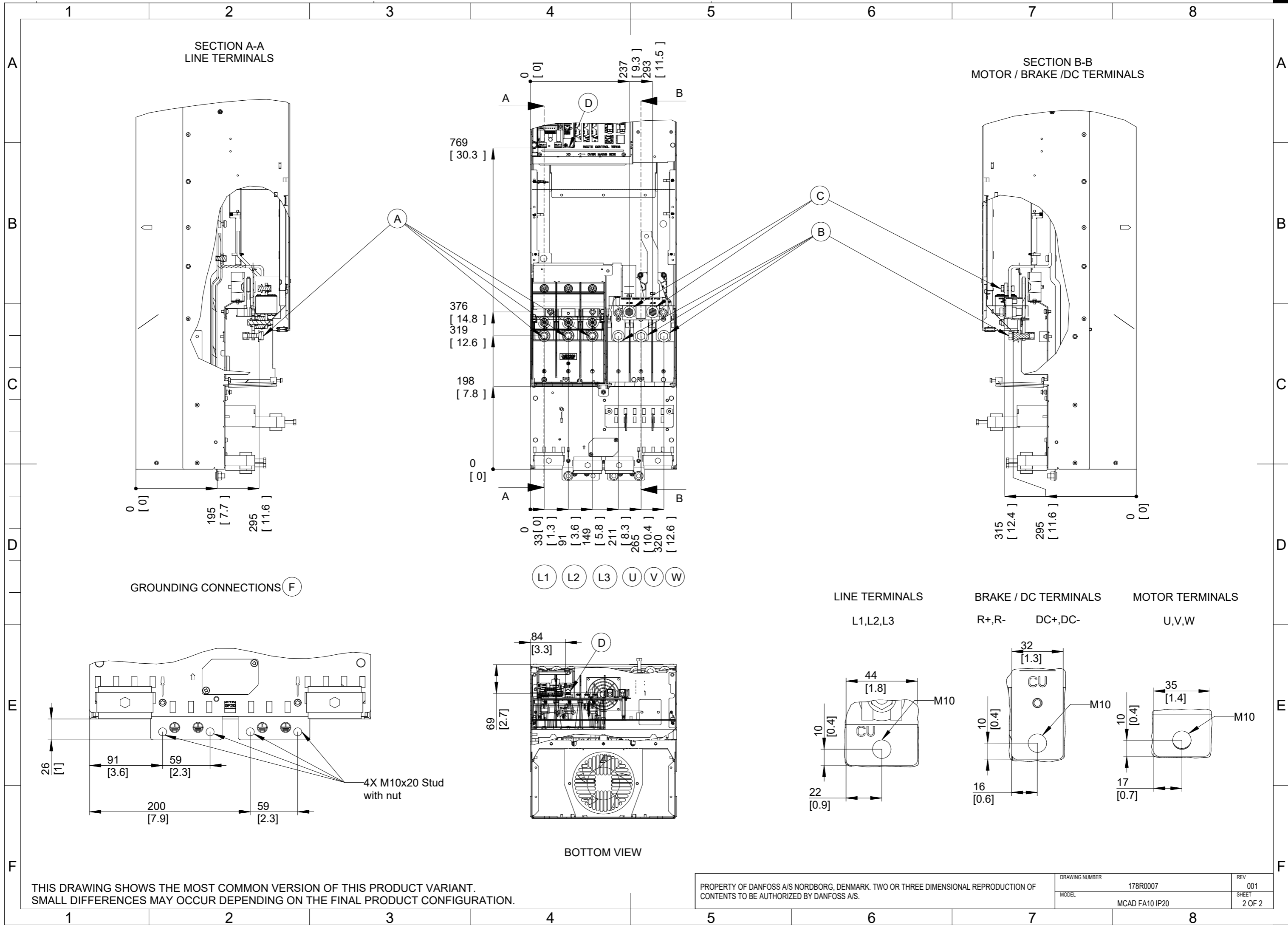
1. MAX AIRFLOW (BACKCHANNEL) - 638 m³/hr(375 CFM)
2. MAX AIRFLOW (CABINET) - 150 m³/hr(88 CFM)

UNLESS OTHERWISE SPECIFIED THE TOLERANCE IS ± 1MM [0.4 INCH]. ALL DIMENSIONS ARE IN MILLIMETERS [INCH]		FIRST ANGLE PROJECTION	SCALE	DRAWING SIZE	MATERIAL	-
			1:10	A3	FINISH	-
					DESCRIPTION	
					MCAD FA10 IP20	
CHANGED					DRAWING NUMBER	
DESIGNED	Kishore	08/29/22			178R0007	
CHECKED					REV	
PROPERTY OF DANFOSS A/S NORDBORG, DENMARK. TWO OR THREE DIMENSIONAL REPRODUCTION OF CONTENTS TO BE AUTHORIZED BY DANFOSS A/S.					001	
					MODEL	
					MCAD FA10 IP20	
					SHEET	
					1 OF 2	



THIS DRAWING SHOWS THE MOST COMMON VERSION OF THIS PRODUCT VARIANT. SMALL DIFFERENCES MAY OCCUR DEPENDING ON THE FINAL PRODUCT CONFIGURATION.

CENTER OF GRAVITY: FOR REFERENCE ONLY, THE PRODUCT CONFIGURATION MAY INFLUENCE THE CG IN ALL THREE AXES.



THIS DRAWING SHOWS THE MOST COMMON VERSION OF THIS PRODUCT VARIANT.
 SMALL DIFFERENCES MAY OCCUR DEPENDING ON THE FINAL PRODUCT CONFIGURATION.

PROPERTY OF DANFOSS A/S NORDBORG, DENMARK. TWO OR THREE DIMENSIONAL REPRODUCTION OF
 CONTENTS TO BE AUTHORIZED BY DANFOSS A/S.

DRAWING NUMBER	178R0007	REV	001
MODEL	MCAD FA10 IP20	SHEET	2 OF 2