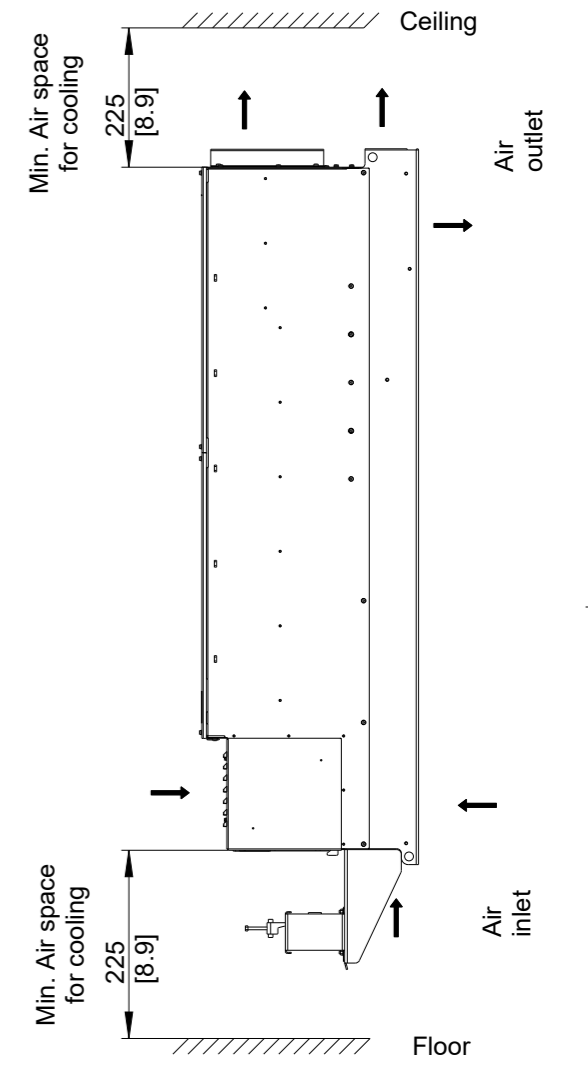
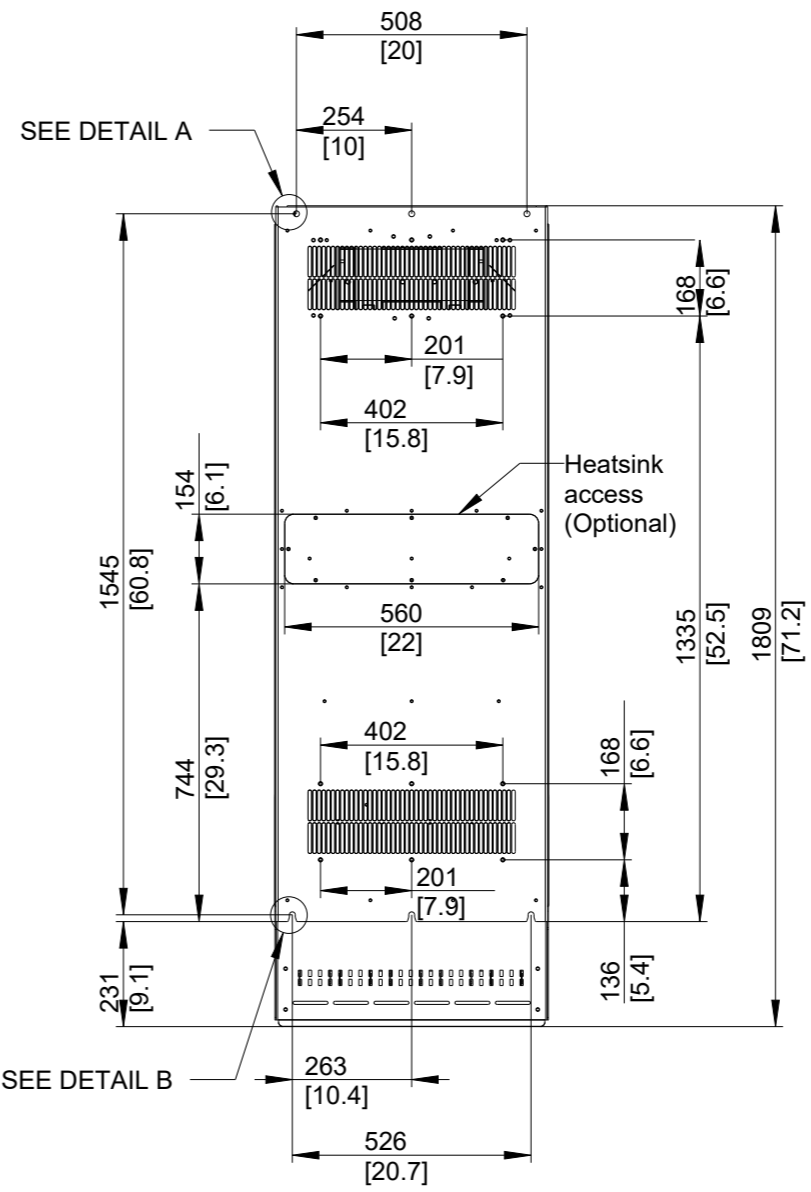
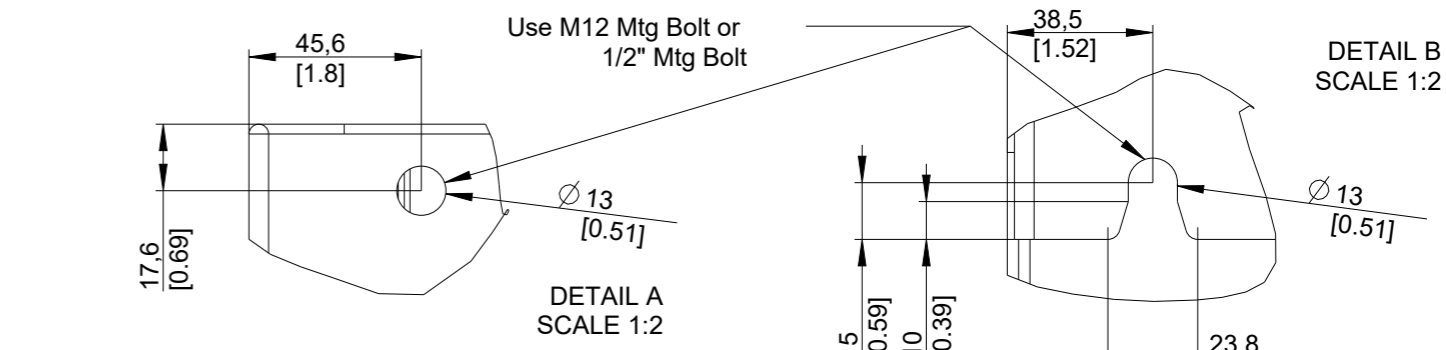
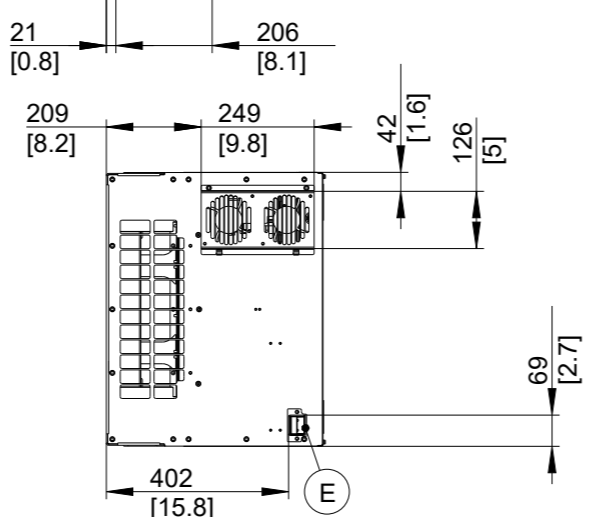
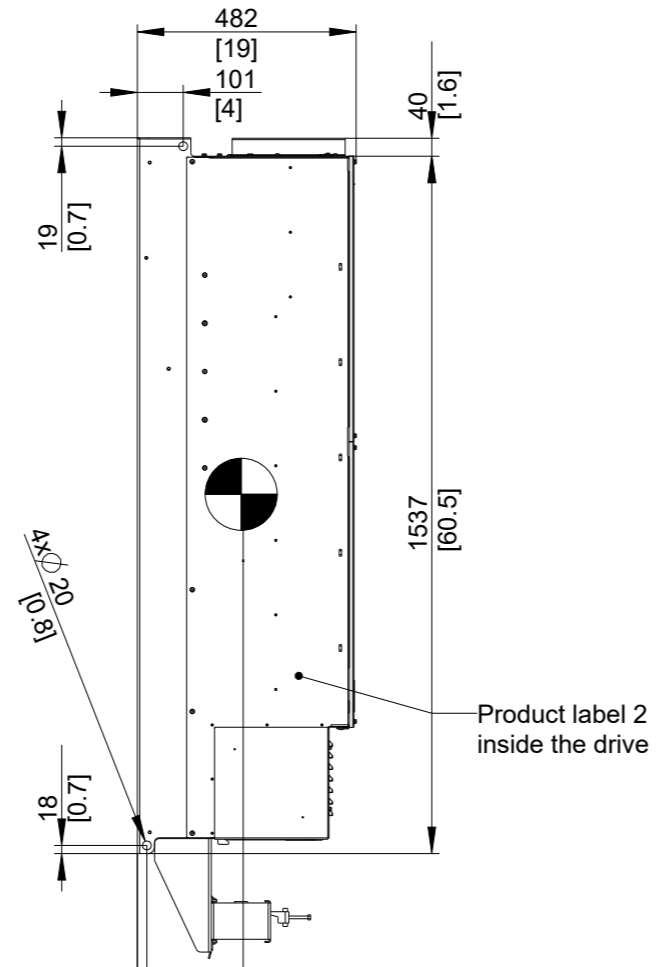
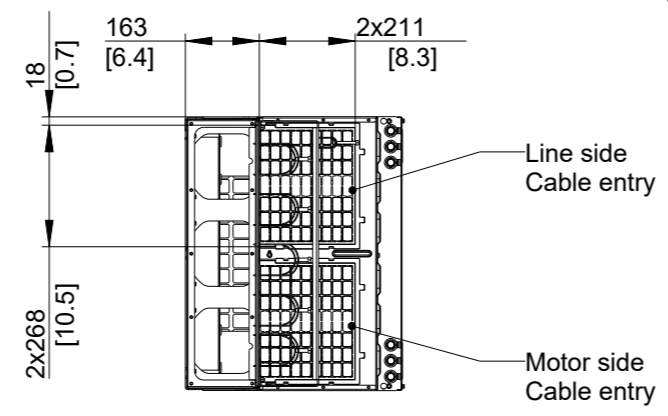
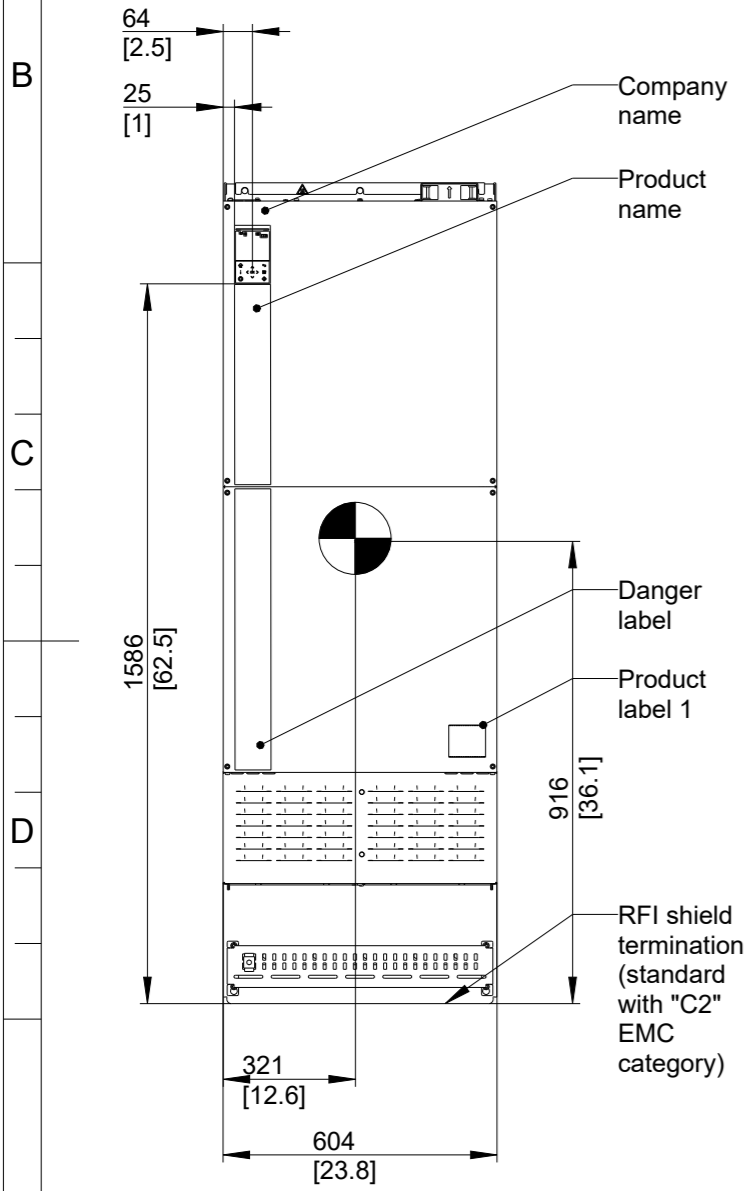


Type	Value
Max Weight	298kg/657lb
IP Class	IP20
UL Type	Open



1. MAX AIRFLOW (BACKCHANNEL) - 1206 m<sup>3</sup>/hr (710 CFM)
2. MAX AIRFLOW (CABINET) - 660 m<sup>3</sup>/hr (390 CFM)

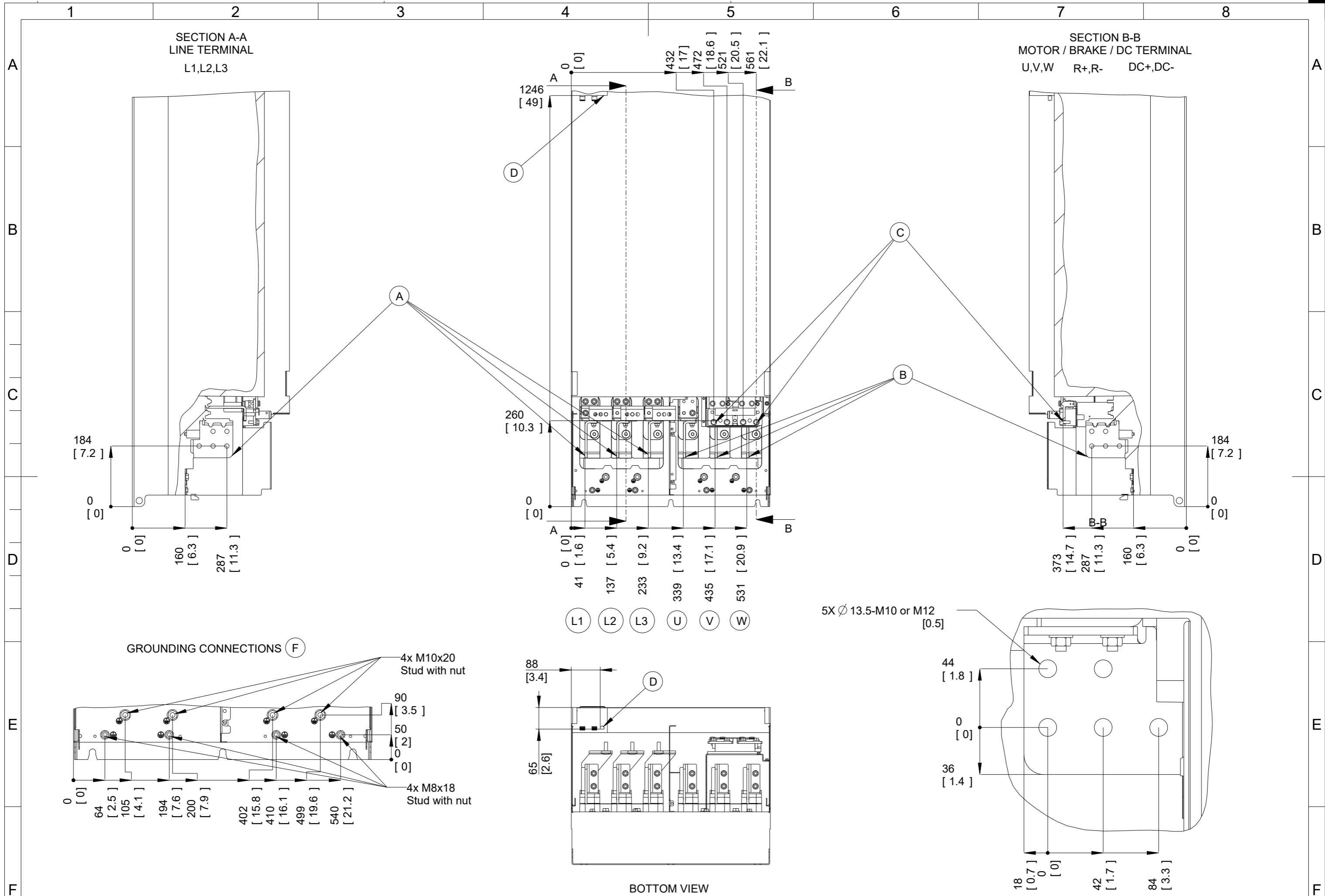
Position of connectors	
A	Line
B	Motor
C	Brake / DC Terminals
D	Interface X0
E	Interface X1/X2
F	Grounding connections

THIS DRAWING SHOWS THE MOST COMMON VERSION OF THIS PRODUCT VARIANT. SMALL DIFFERENCES MAY OCCUR DEPENDING ON THE FINAL PRODUCT CONFIGURATION.

CENTER OF GRAVITY: FOR REFERENCE ONLY, THE PRODUCT CONFIGURATION MAY INFLUENCE THE CG IN ALL THREE AXES.

UNLESS OTHERWISE SPECIFIED THE TOLERANCE IS ± 1MM [0.4 INCH]. ALL DIMENSIONS ARE IN MILLIMETERS [INCH]		FIRST ANGLE PROJECTION	SCALE	DRAWING SIZE	MATERIAL	-
			1:20	A3	FINISH	-
					DESCRIPTION	
					MCAD FA12 IP20	
CHANGED					DRAWING NUMBER	
DESIGNED	Kishore	08/26/22			178R0009	
CHECKED					REV	
PROPERTY OF DANFOSS A/S NORDBORG, DENMARK. TWO OR THREE DIMENSIONAL REPRODUCTION OF CONTENTS TO BE AUTHORIZED BY DANFOSS A/S.					001	
					MODEL	
					MCAD FA12 IP20	
					SHEET	
					1 OF 2	





THIS DRAWING SHOWS THE MOST COMMON VERSION OF THIS PRODUCT VARIANT.  
SMALL DIFFERENCES MAY OCCUR DEPENDING ON THE FINAL PRODUCT CONFIGURATION.

PROPERTY OF DANFOSS A/S NORDBORG, DENMARK. TWO OR THREE DIMENSIONAL REPRODUCTION OF CONTENTS TO BE AUTHORIZED BY DANFOSS A/S.

DRAWING NUMBER	178R0009	REV	001
MODEL	MCAD FA12 IP20	SHEET	2 OF 2