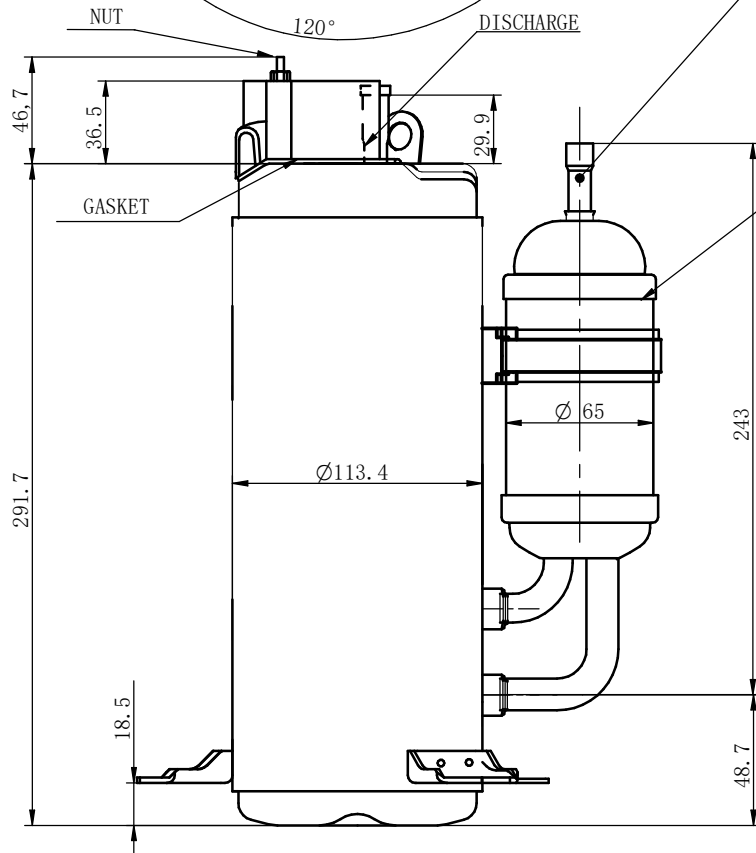
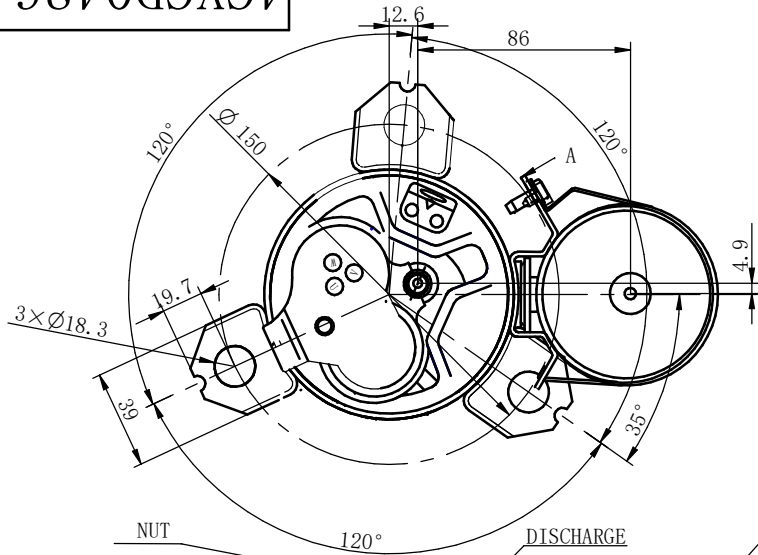


4CYCD0426

B

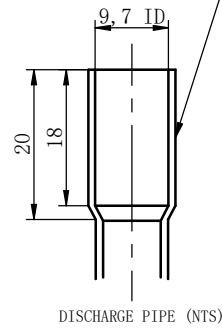


THE ACCUMULATOR APPEARANCE IS  
SUBJECT TO MATERIAL OBJECT

NOTE:

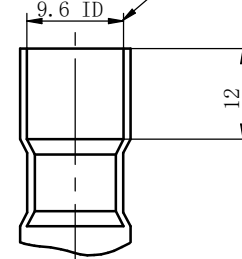
1. THE TORQUE EN FORCED ON THE NUT IS  $1.5 \pm 0.3 \text{ N.m}$ .
2. PUTTING OUT RUBBER PLUG WHEN FIXING EARTH PARTS.

THE COLUMN WHICH LESS THAN DIAMETER 9.6mm CAN PASS  
THE PIPE, BUT THE COLUMN WHICH MORE THAN DIAMETER  
9.2mm CAN T PASS THE PROTRUSIVE POSITION.

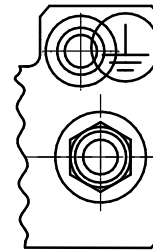


DISCHARGE PIPE (NTS)

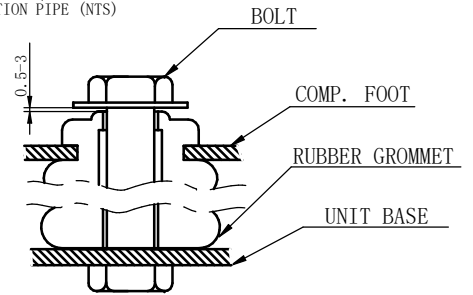
THE COLUMN WHICH LESS THAN DIAMETER  
9.48mm CAN PASS THE PIPE.



SUCTION PIPE (NTS)



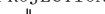
VIEW FROM A(NTS)



RUBBER GROMMET STRUCTURE

THE CONCRETE APPEARANCE IS  
SUBJECT TO MATERIAL OBJECT

DIMENSION: mm

	RE. MARKS				PROJECTION	SCALE	
						NTS	
REGD	DWN.			TITLE			DWN.ND.
	CHKD.						
	CHKD.						
	APPD.						
					DIMENSIONED		4CYCD0426
					SKETCH		