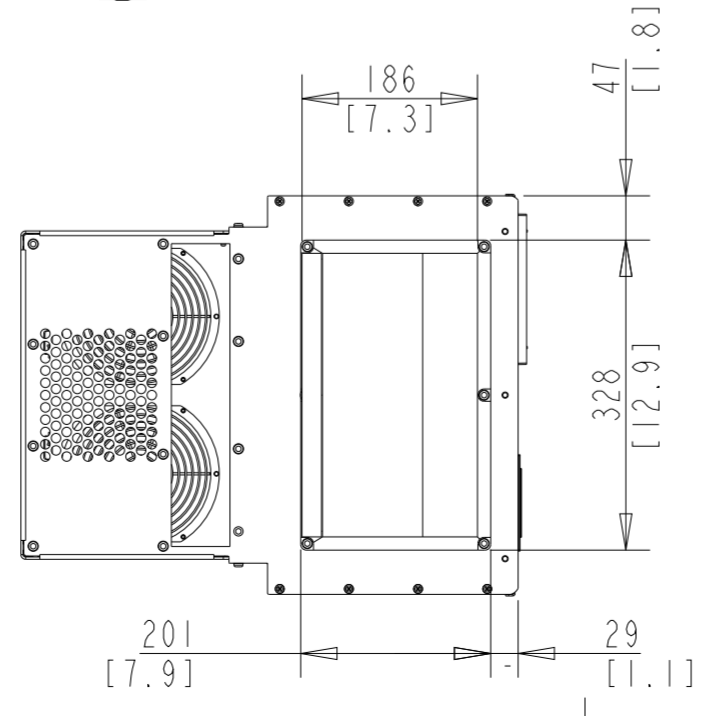
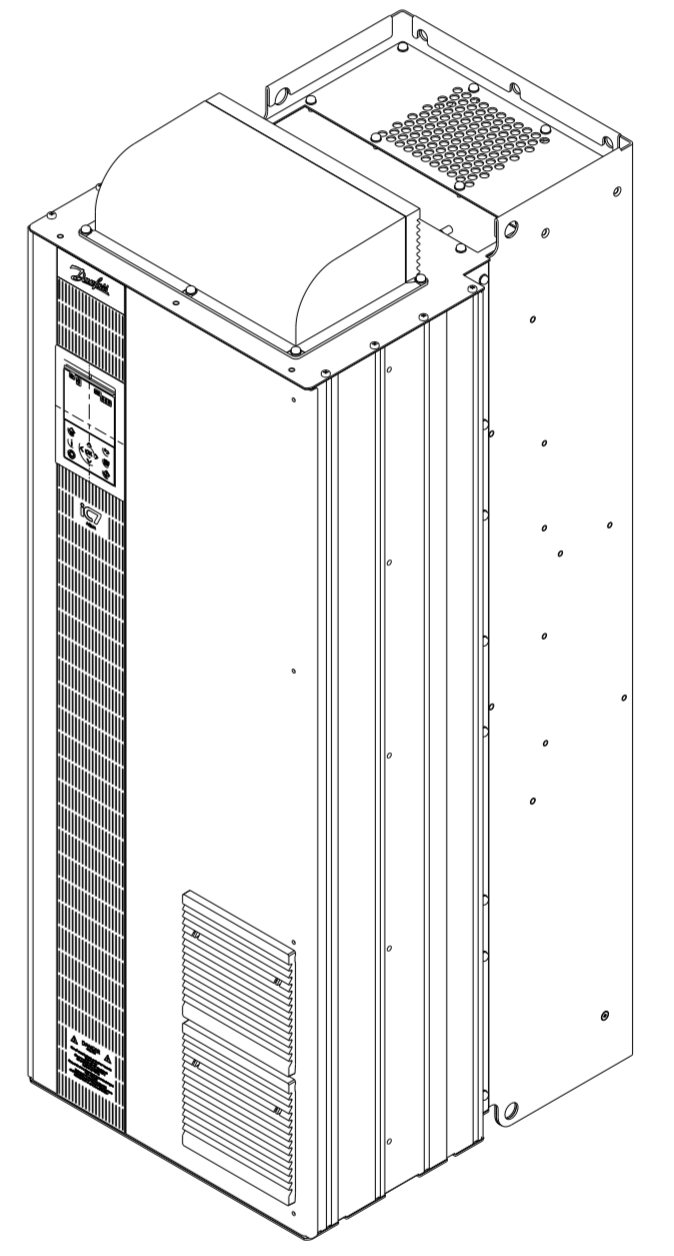
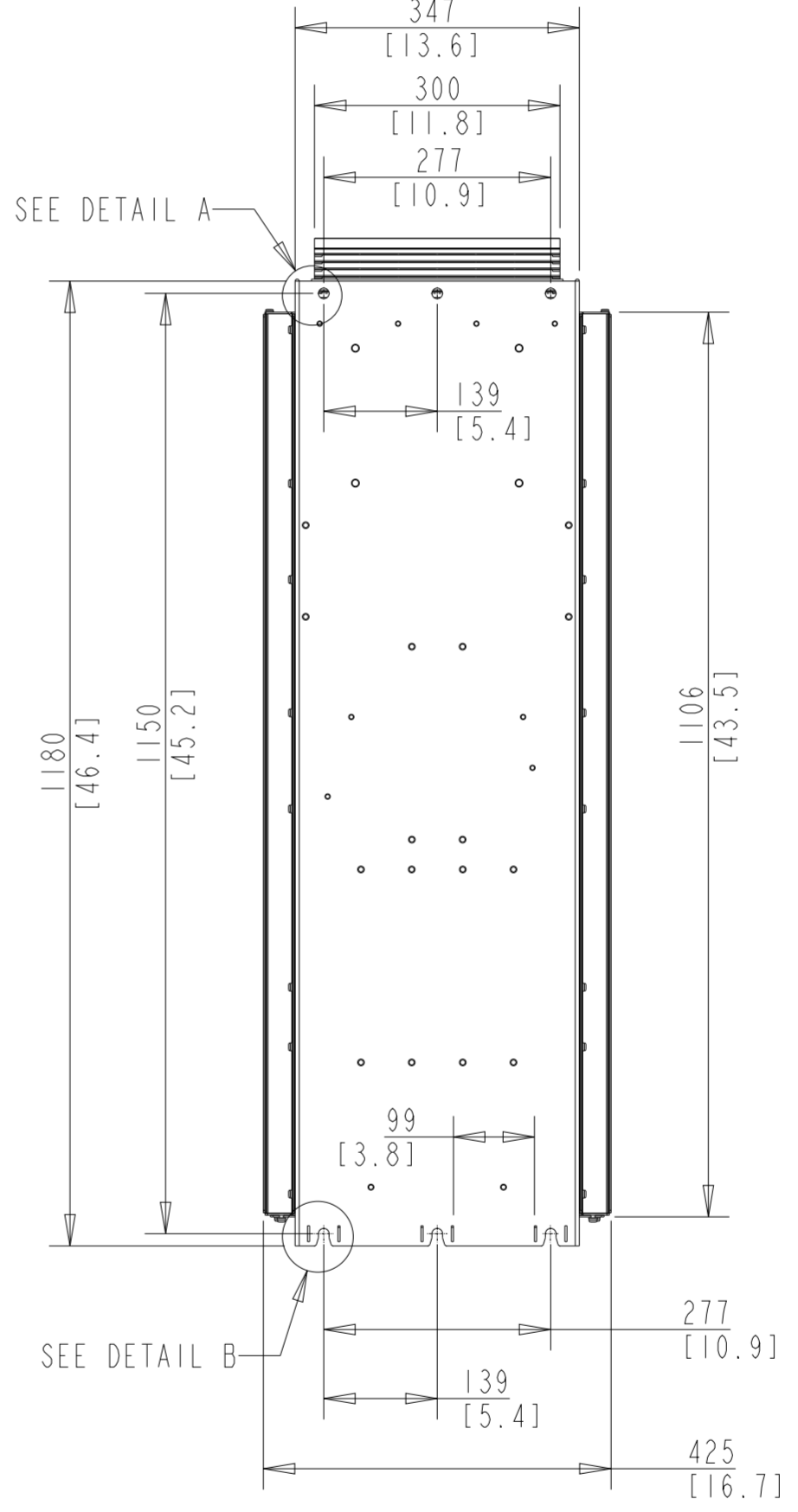
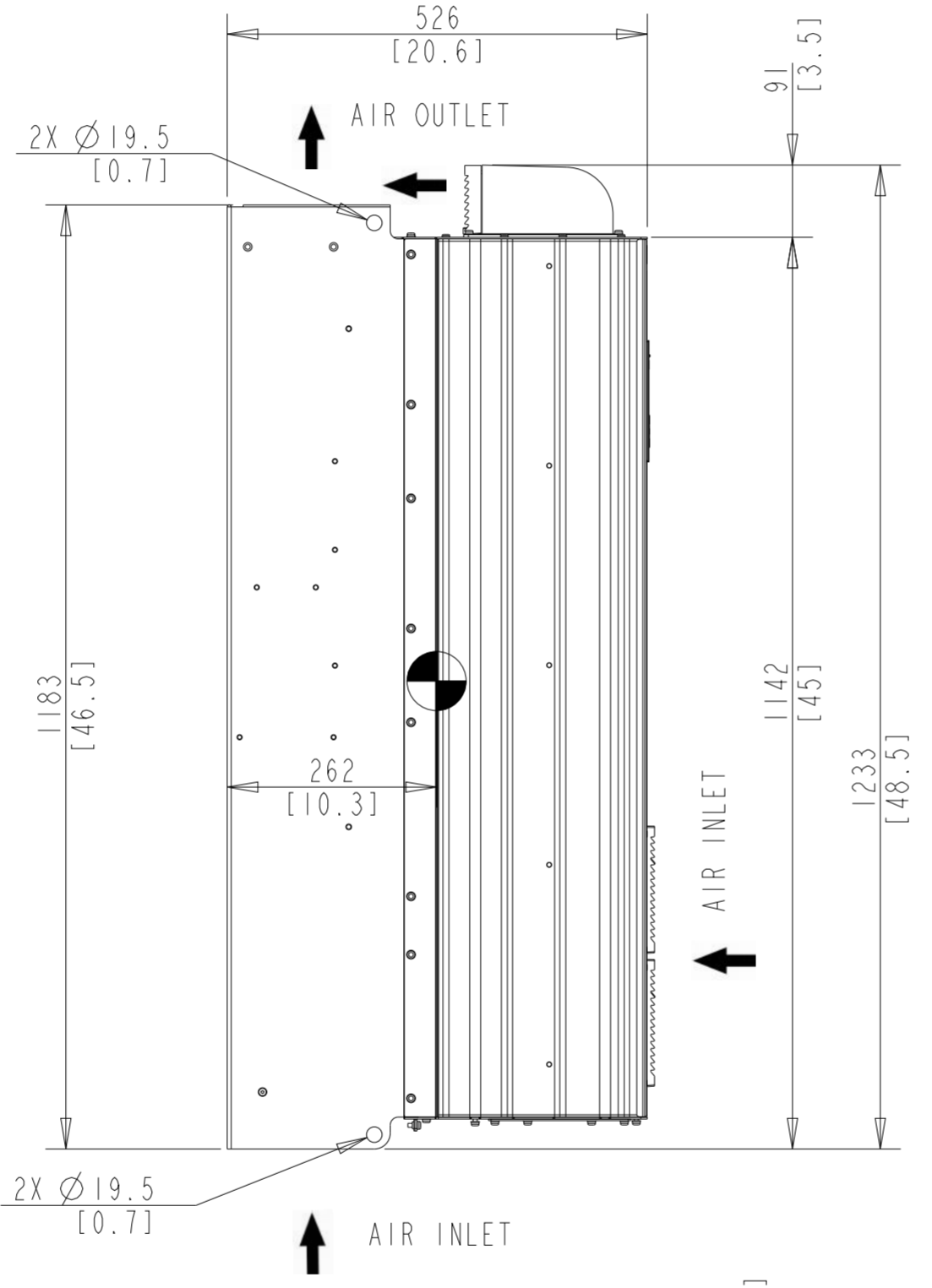
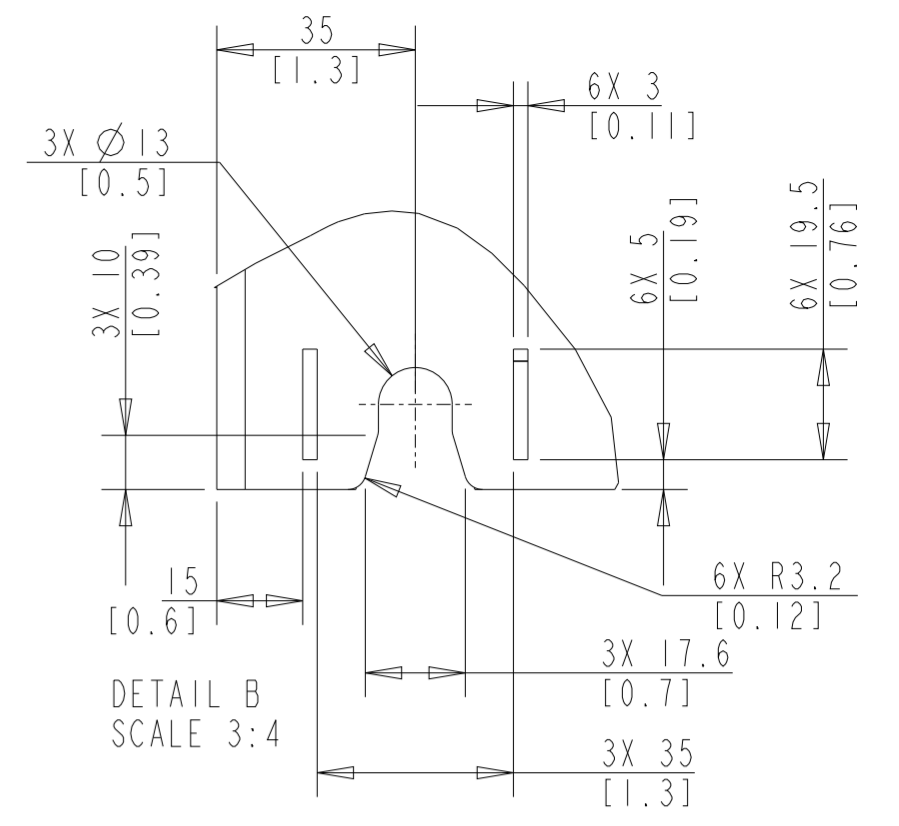
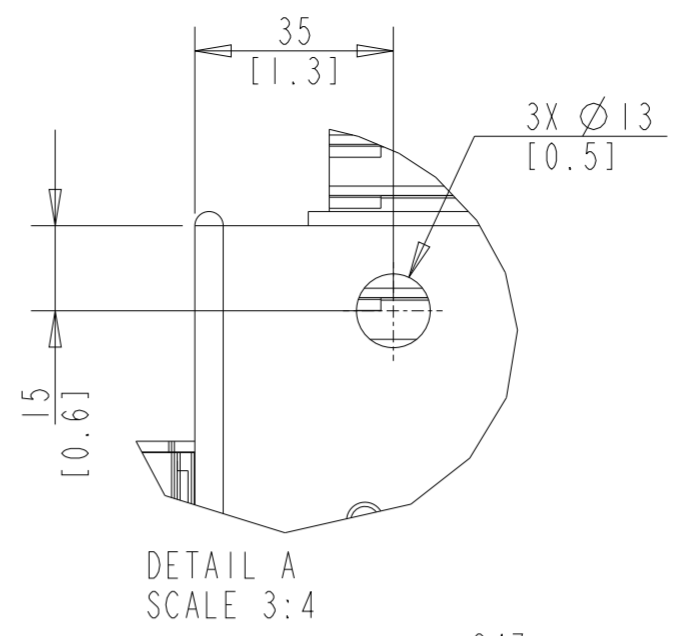
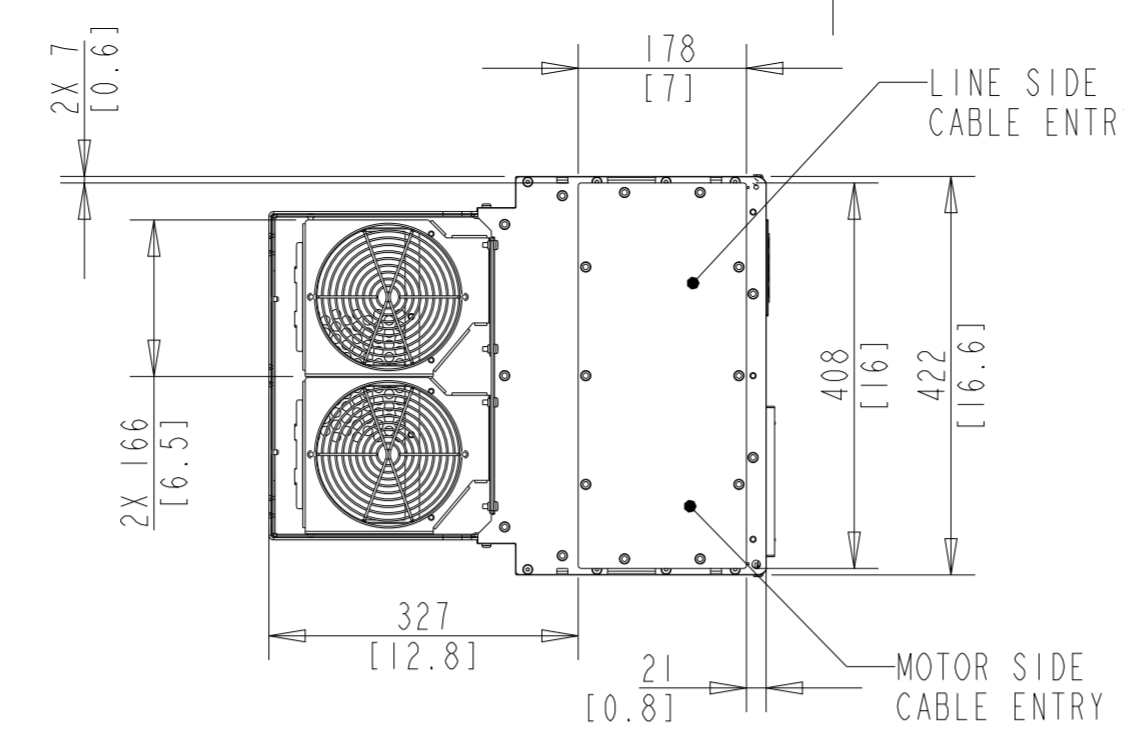
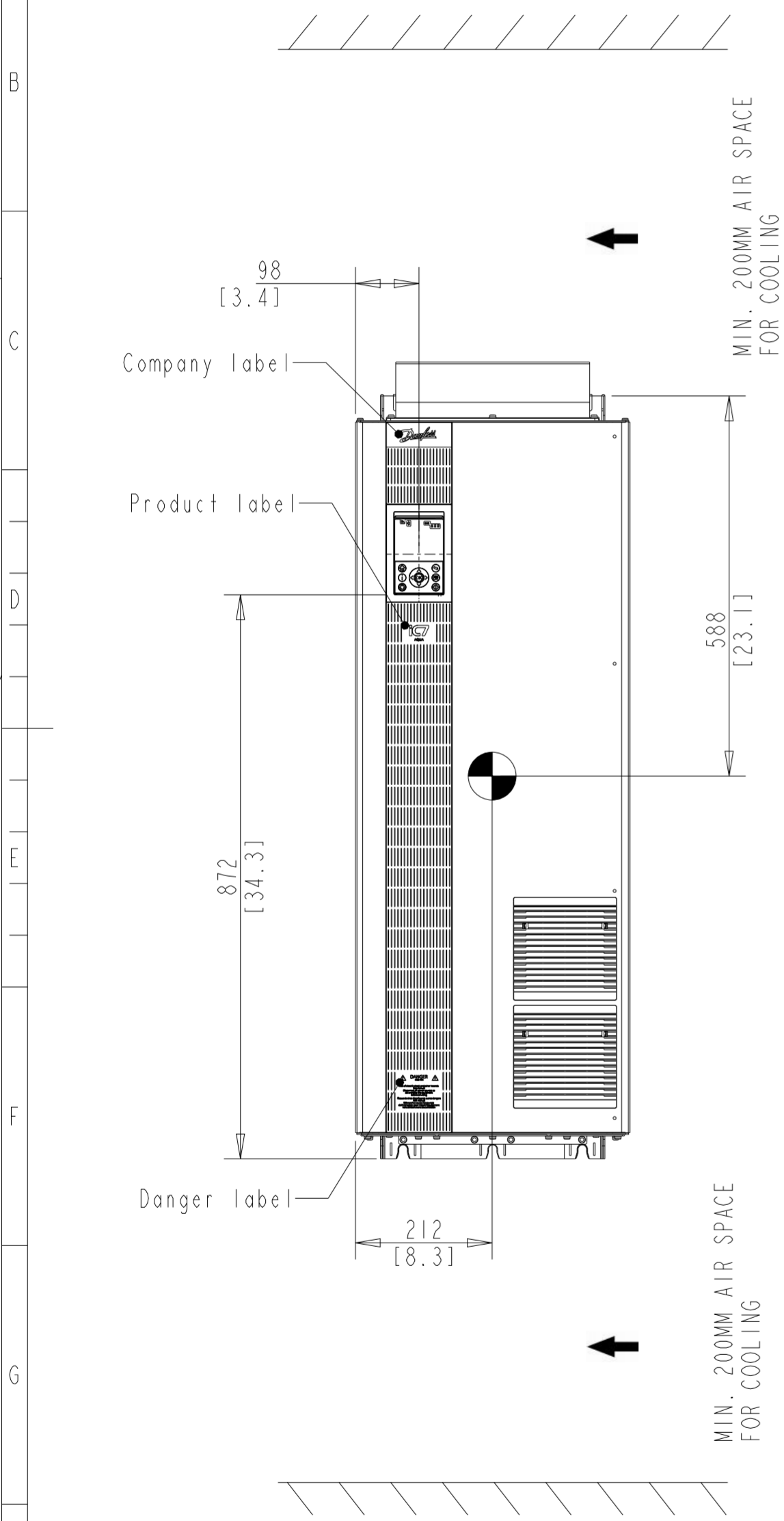


Type	Value
Max. weight	158 Kg/ 348 lbs
IP Class	IP54
UL Type	Type 12



THIS DRAWING SHOWS THE MOST COMMON VERSION OF THIS PRODUCT VARIANT. SMALL DIFFERENCES MAY OCCUR DEPENDING ON THE FINAL PRODUCT CONFIGURATION

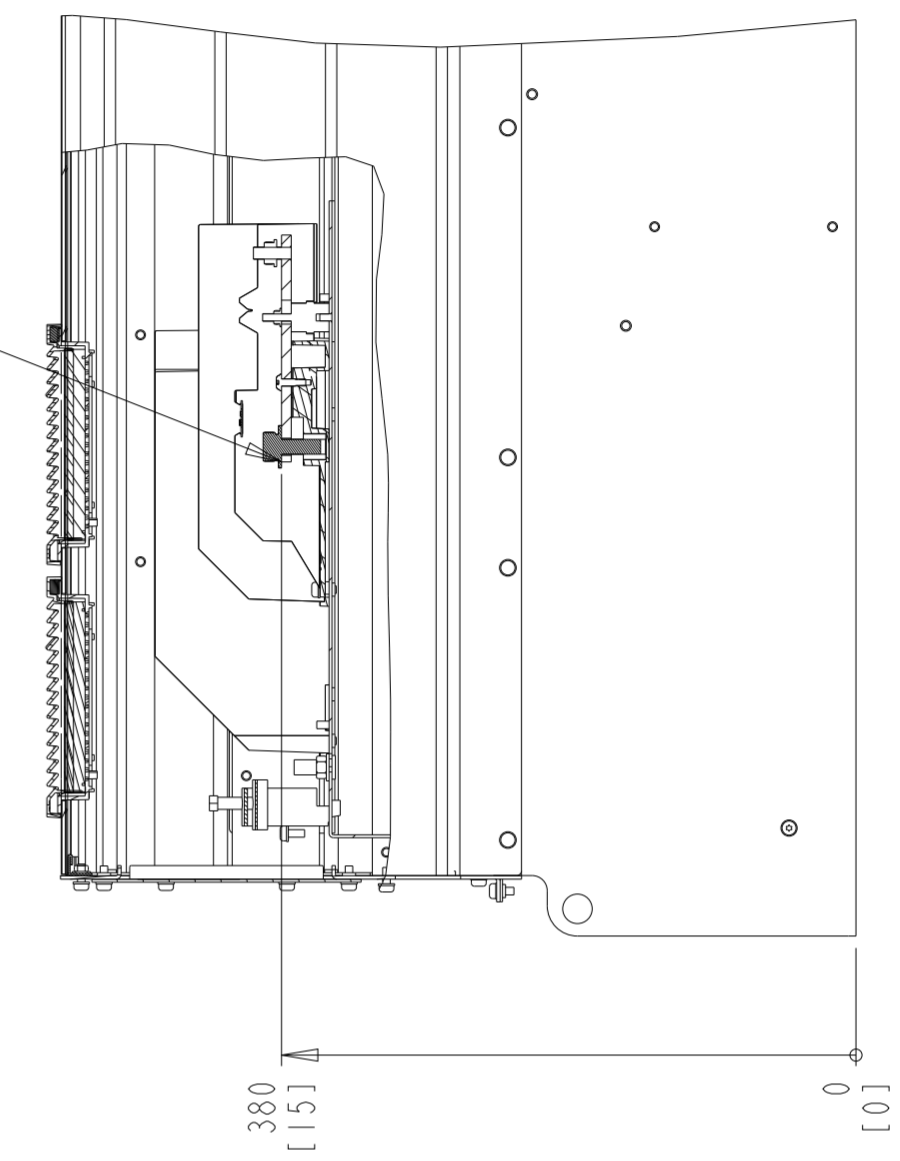
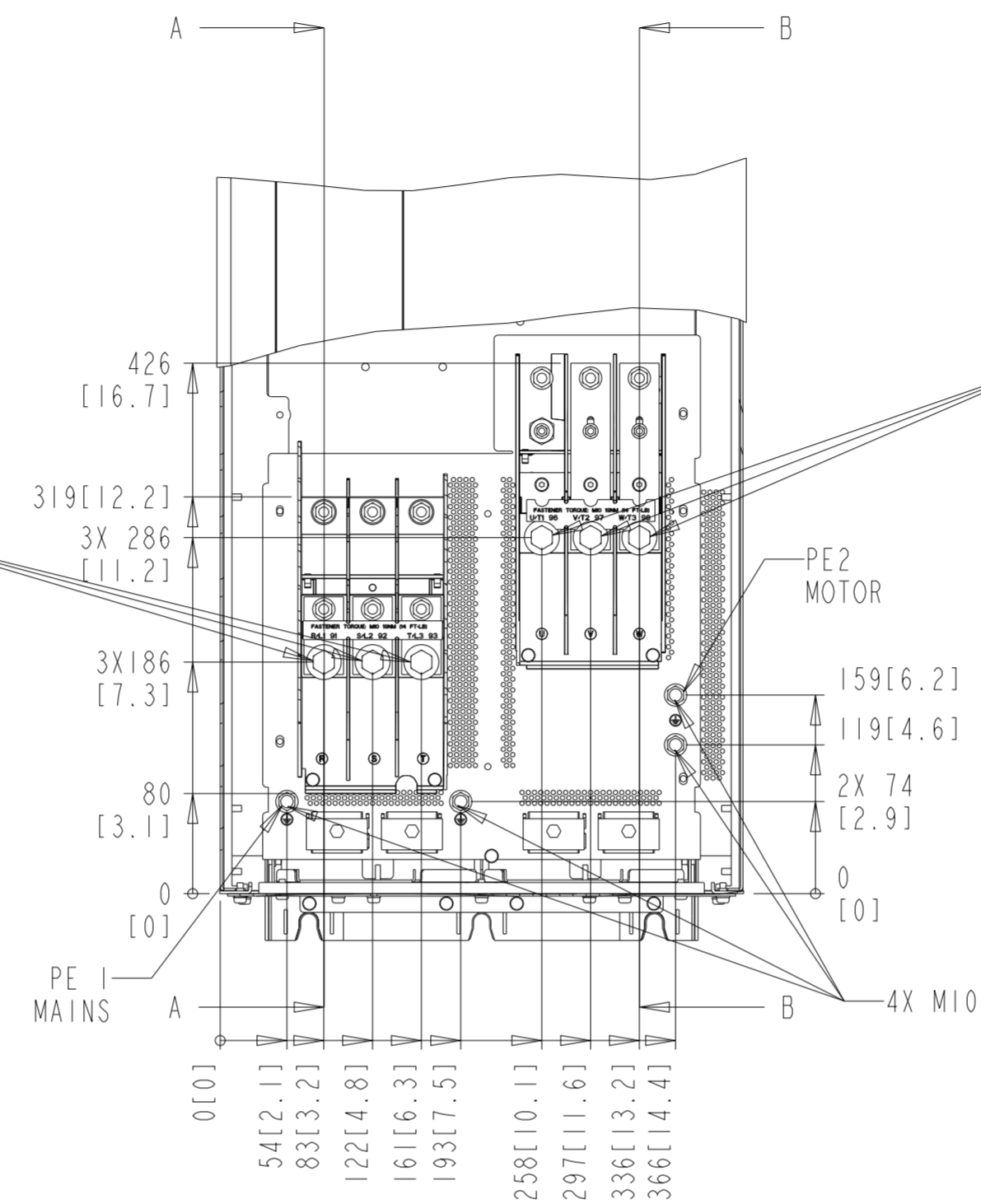
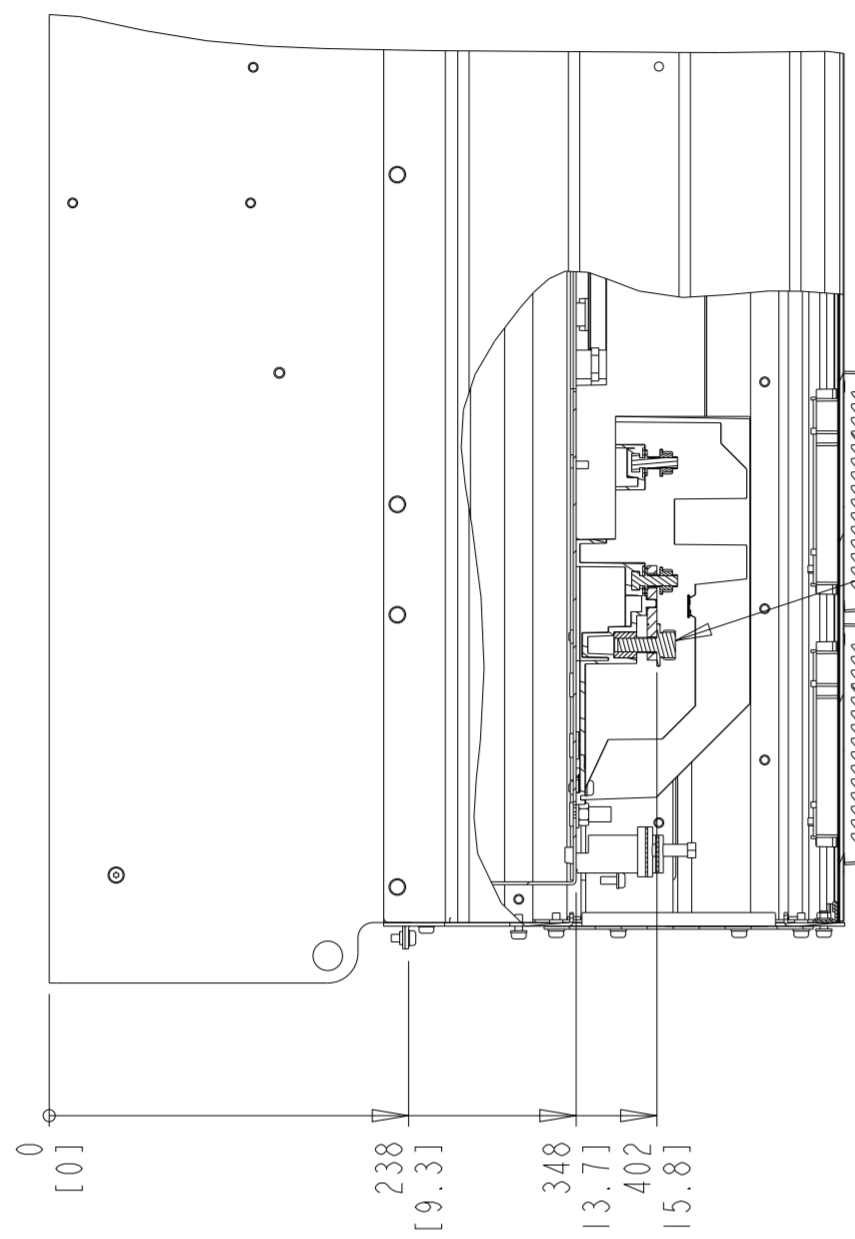
UNLESS OTHERWISE SPECIFIED INTERPRET DIM. & TOL. PER ASME Y14.5M-1994 ALL DIMENSIONS ARE IN MILLIMETERS [INCH] .X±1.0 .XX±0.50 ≤±1.0		THIRD ANGLE PROJECTION	SCALE	SIZE	MATERIAL
— PDM CONTROLLED DRAWING — NOT VALID WITHOUT FROZEN DATE IN ID STAMP			0.125	A2	
CHANGED					FINISH
DESIGNED	DANFOSS	10/21/24			DESCRIPTION
CHECKED					MCAD-FB106-IP54
CONFIDENTIAL: PROPERTY OF DANFOSS A/S NORDBORG, DENMARK. NOT TO BE HANDED OVER TO BE COPIED OR BE USED BY A THIRD PARTY. TWO OR THREE DIMENSIONAL REPRODUCTION OF CONTENTS TO BE AUTHORIZED BY DANFOSS A/S.		DRAWING NUMBER		REV	
		MCAD-FB106-IP54		P1	
		MCAD-FB106-IP54		SHEET	
				1 OF 2	

● CENTER OF GRAVITY: FOR REFERENCE ONLY. THE PRODUCT CONFIGURATION MAY INFLUENCE THE CG IN ALL THREE AXES
 ⊕ CRITICAL CHARACTERISTICS
 ⊖ KEY CHARACTERISTICS
 ○ INSPECTION
 MUST COMPLY TO ROHS DIRECTIVE 2011/65/EU



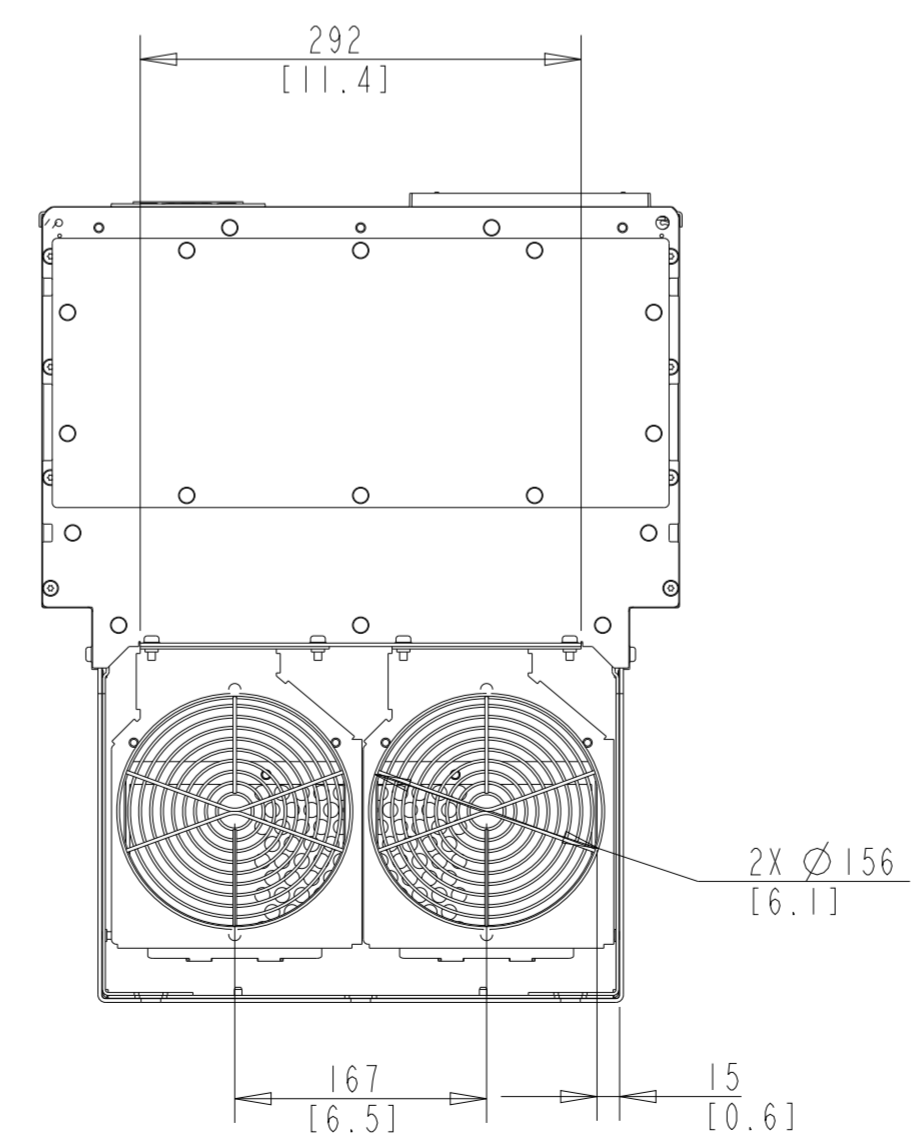
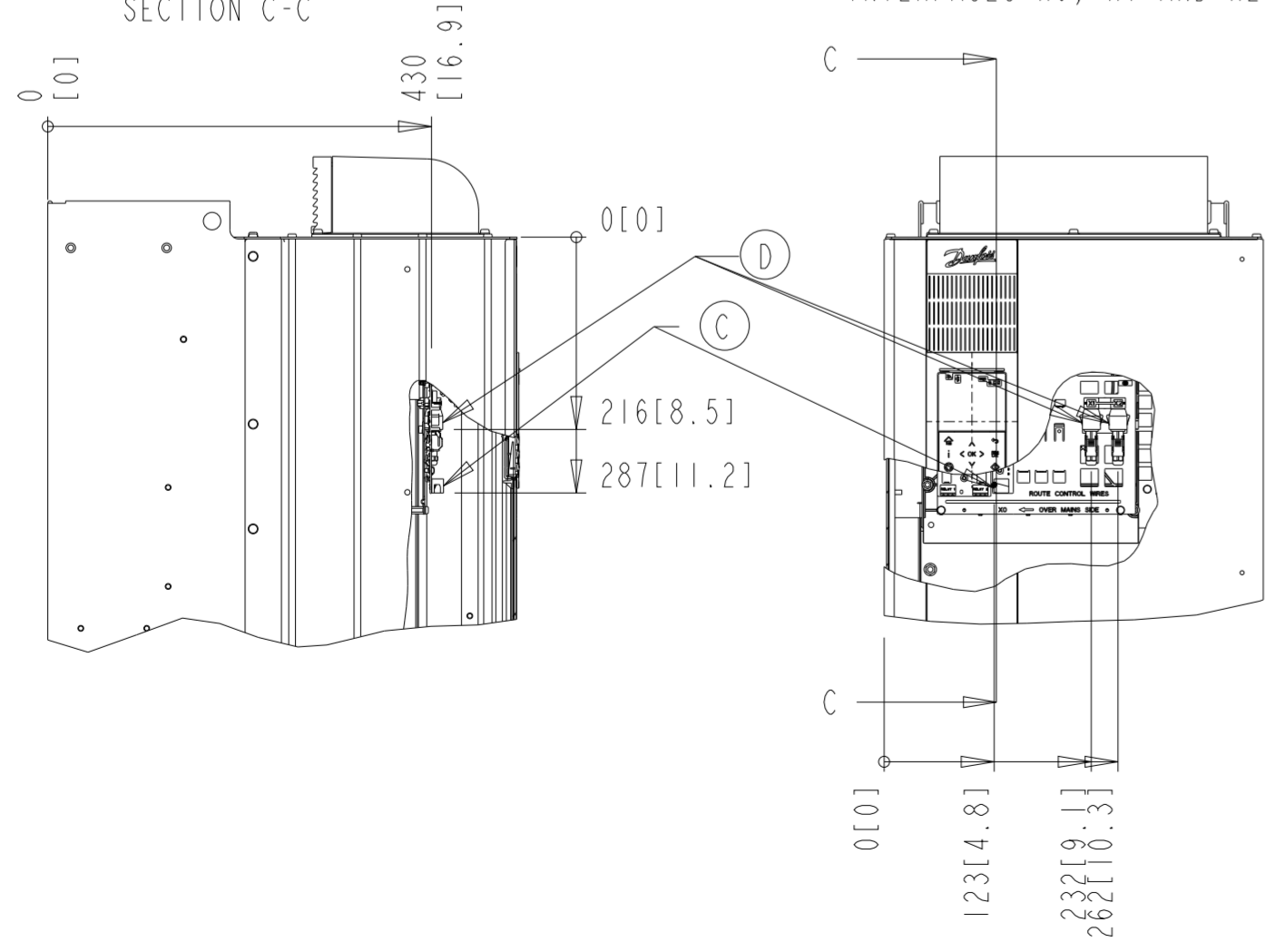
SECTION A-A
LINE TERMINALS

SECTION B-B
MOTOR TERMINALS



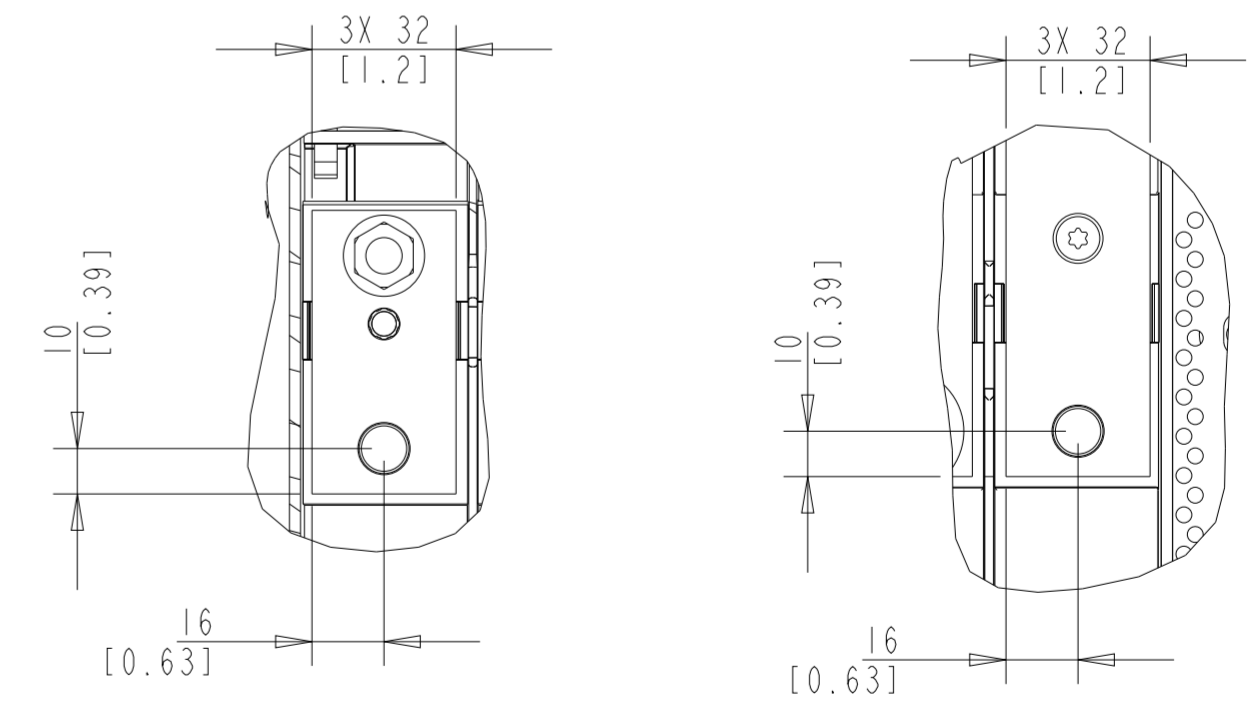
SECTION C-C

INTERFACES X0, X1 AND X2



LINE TERMINAL

MOTOR TERMINAL



Position of connectors	
A	Line
B	Motor
C	Interface X0
D	Interface X1, X2

BOTTOM VIEW