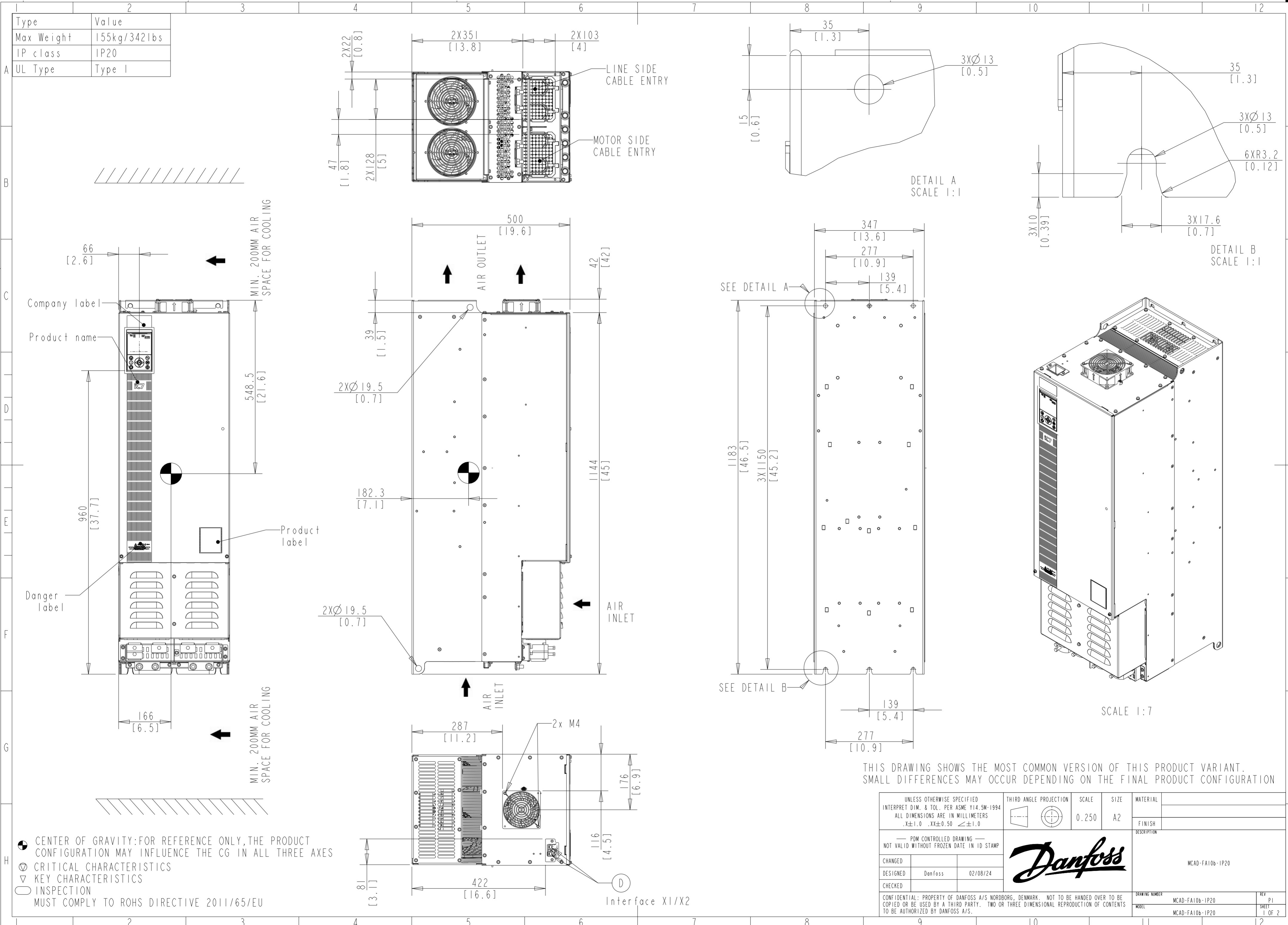


Type	Value
Max Weight	155kg/342lbs
IP class	IP20
UL Type	Type I



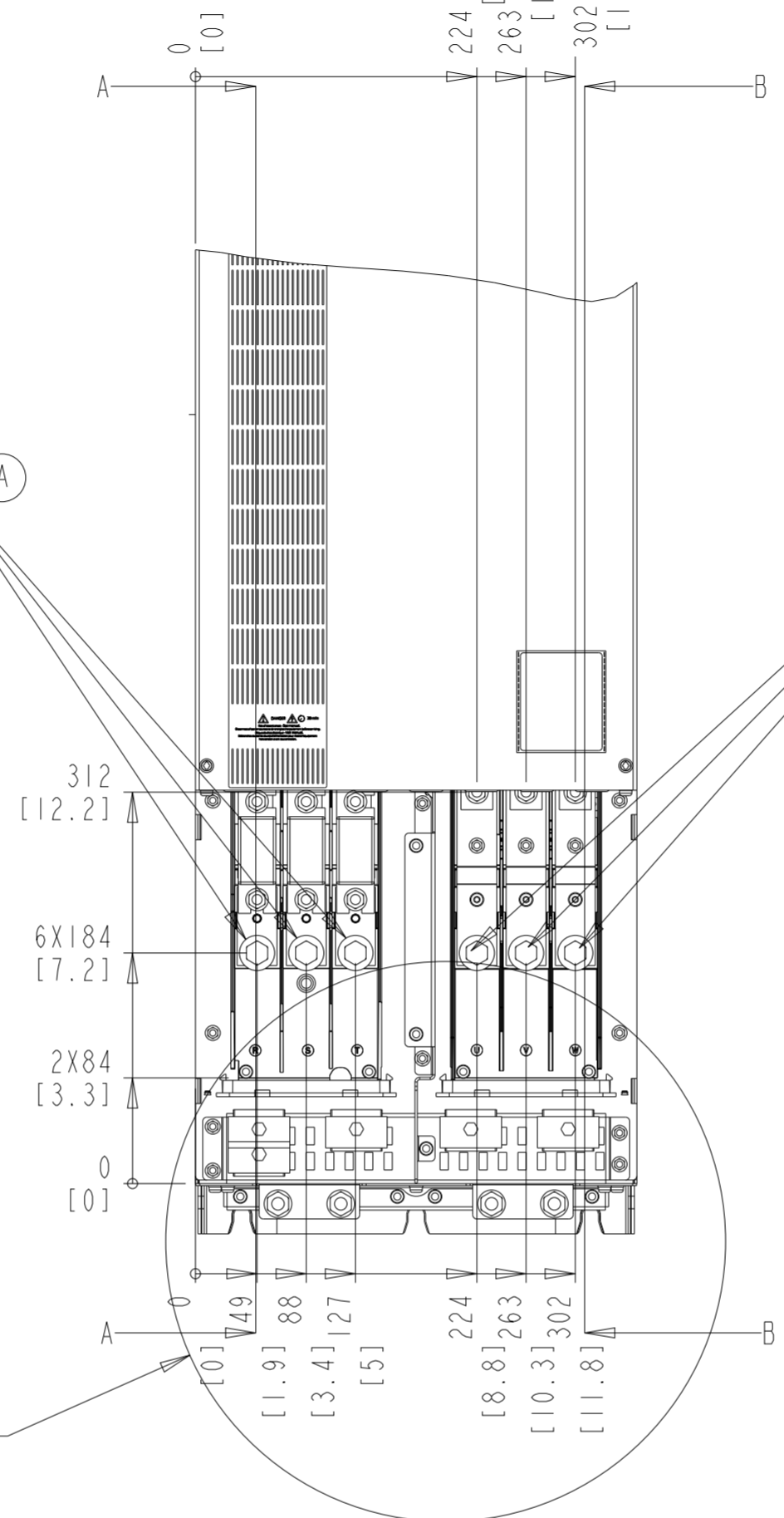
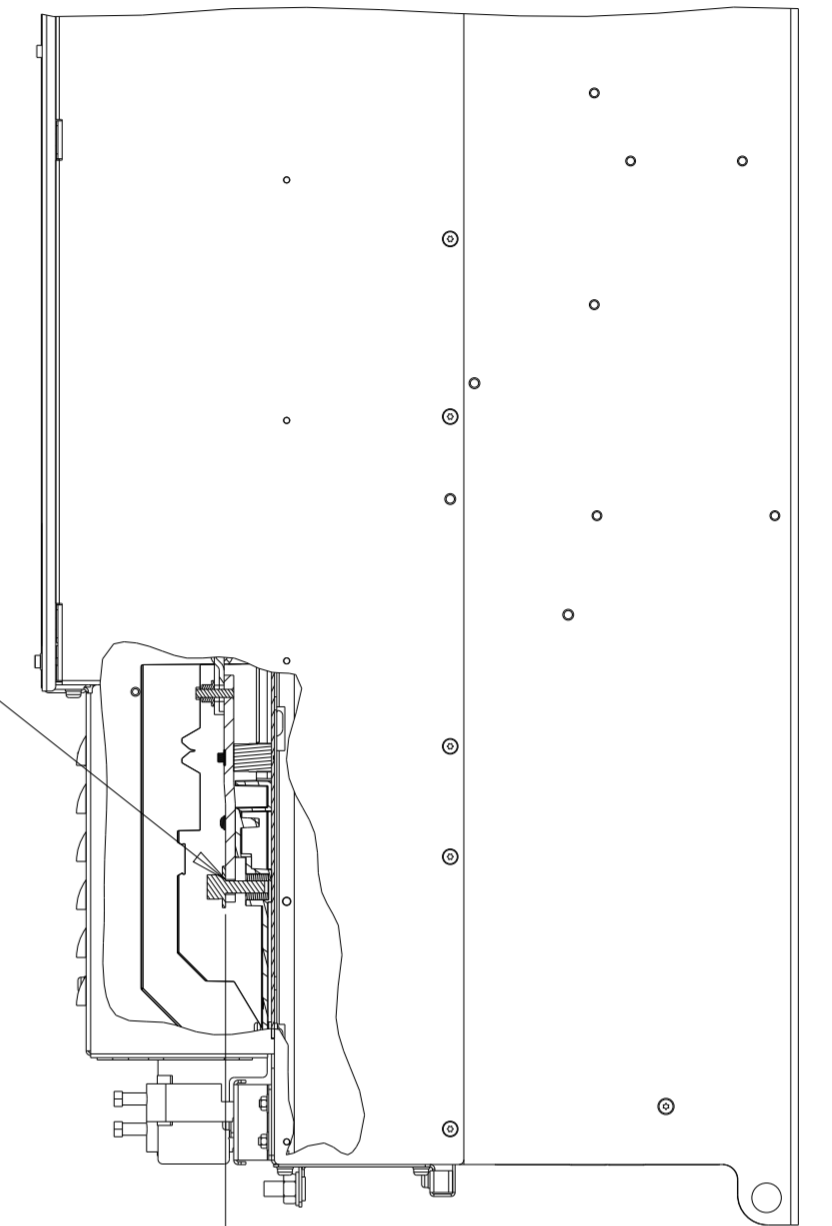
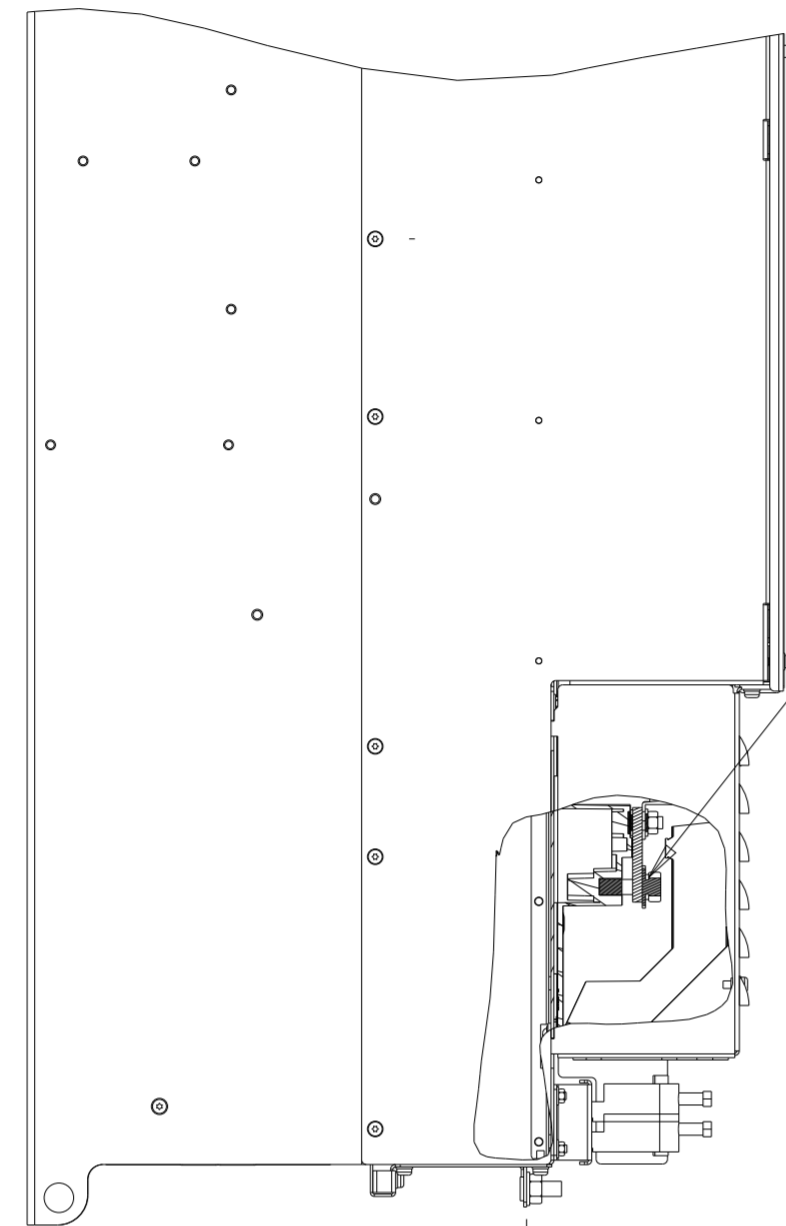
● CENTER OF GRAVITY: FOR REFERENCE ONLY, THE PRODUCT CONFIGURATION MAY INFLUENCE THE CG IN ALL THREE AXES
 ⊕ CRITICAL CHARACTERISTICS
 ⊖ KEY CHARACTERISTICS
 ○ INSPECTION
 MUST COMPLY TO ROHS DIRECTIVE 2011/65/EU

THIS DRAWING SHOWS THE MOST COMMON VERSION OF THIS PRODUCT VARIANT. SMALL DIFFERENCES MAY OCCUR DEPENDING ON THE FINAL PRODUCT CONFIGURATION

UNLESS OTHERWISE SPECIFIED INTERPRET DIM. & TOL. PER ASME Y14.5M-1994 ALL DIMENSIONS ARE IN MILLIMETERS .X±1.0 .XX±0.50 ≤±1.0		THIRD ANGLE PROJECTION	SCALE 0.250	SIZE A2	MATERIAL
— PDM CONTROLLED DRAWING — NOT VALID WITHOUT FROZEN DATE IN ID STAMP					FINISH
CHANGED					DESCRIPTION
DESIGNED	Danfoss 02/08/24				MCAD-FA106-IP20
CHECKED					DRAWING NUMBER
CONFIDENTIAL: PROPERTY OF DANFOSS A/S NORDBORG, DENMARK. NOT TO BE HANDED OVER TO BE COPIED OR BE USED BY A THIRD PARTY. TWO OR THREE DIMENSIONAL REPRODUCTION OF CONTENTS TO BE AUTHORIZED BY DANFOSS A/S.		MODEL	MCAD-FA106-IP20	REV	P1
			MCAD-FA106-IP20	SHEET	1 OF 2

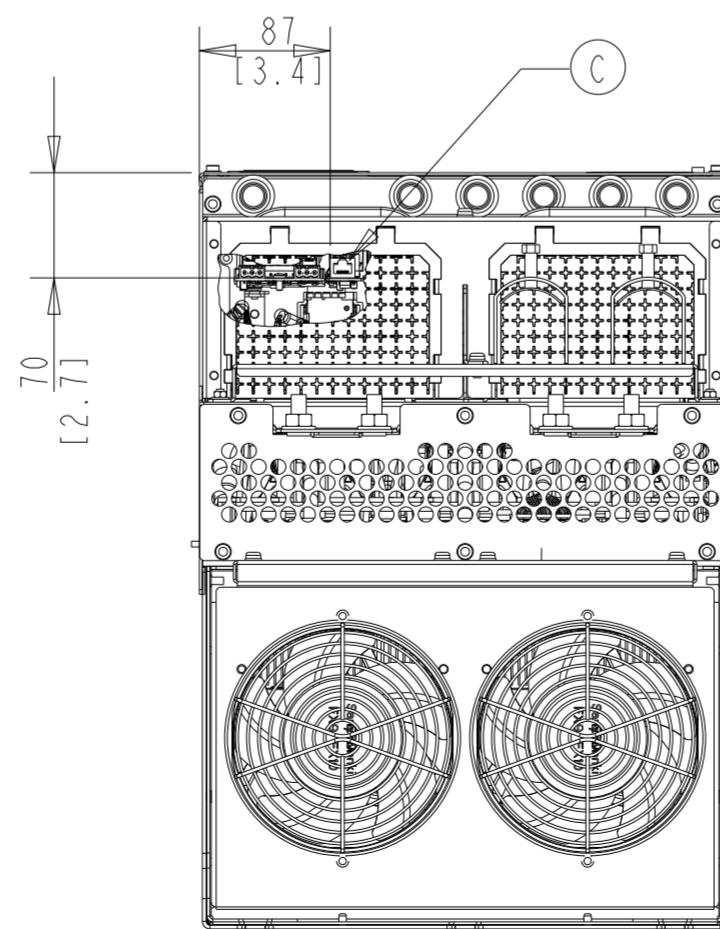
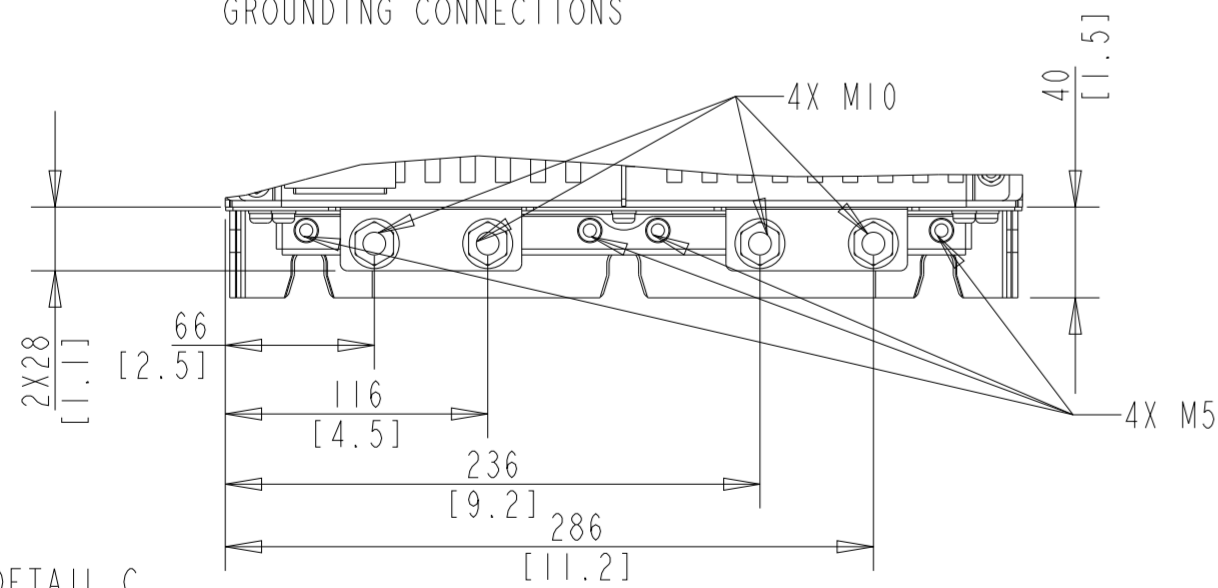
SECTION A-A
LINE TERMINALS

SECTION B-B
MOTOR TERMINALS



SEE DETAIL C

GROUNDING CONNECTIONS

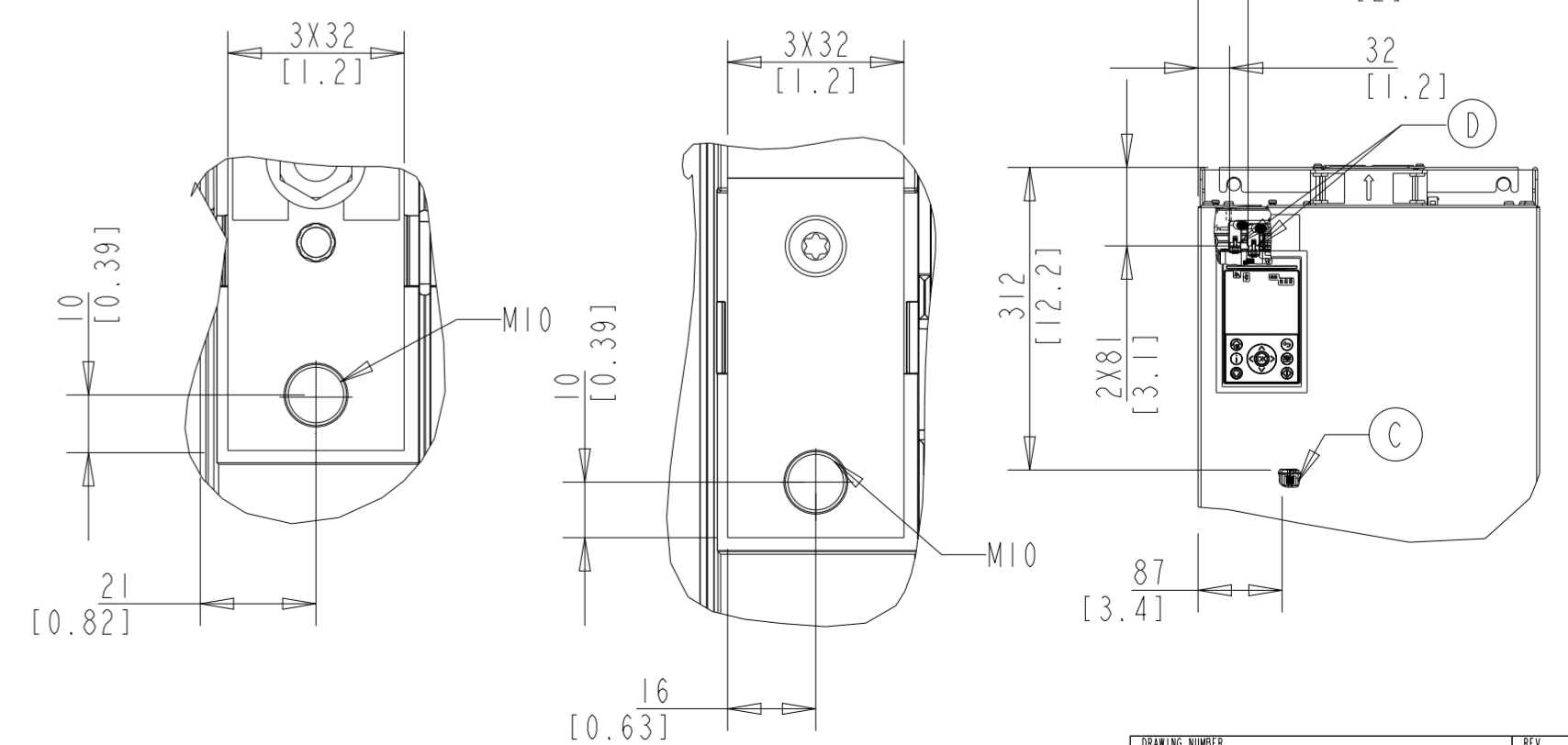


BOTTOM VIEW

LINE TERMINAL

MOTOR TERMINAL

INTERFACE X0, X1/X2



DETAIL C
SCALE 1:3

Position of connectors	
A	Line
B	Motor
C	Interface X0
D	Interface X1/X2