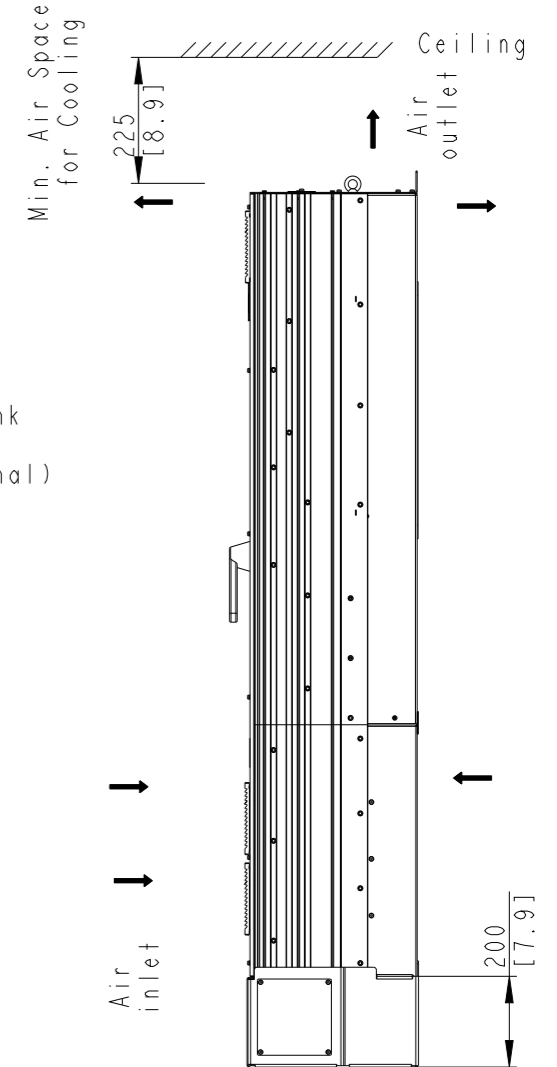
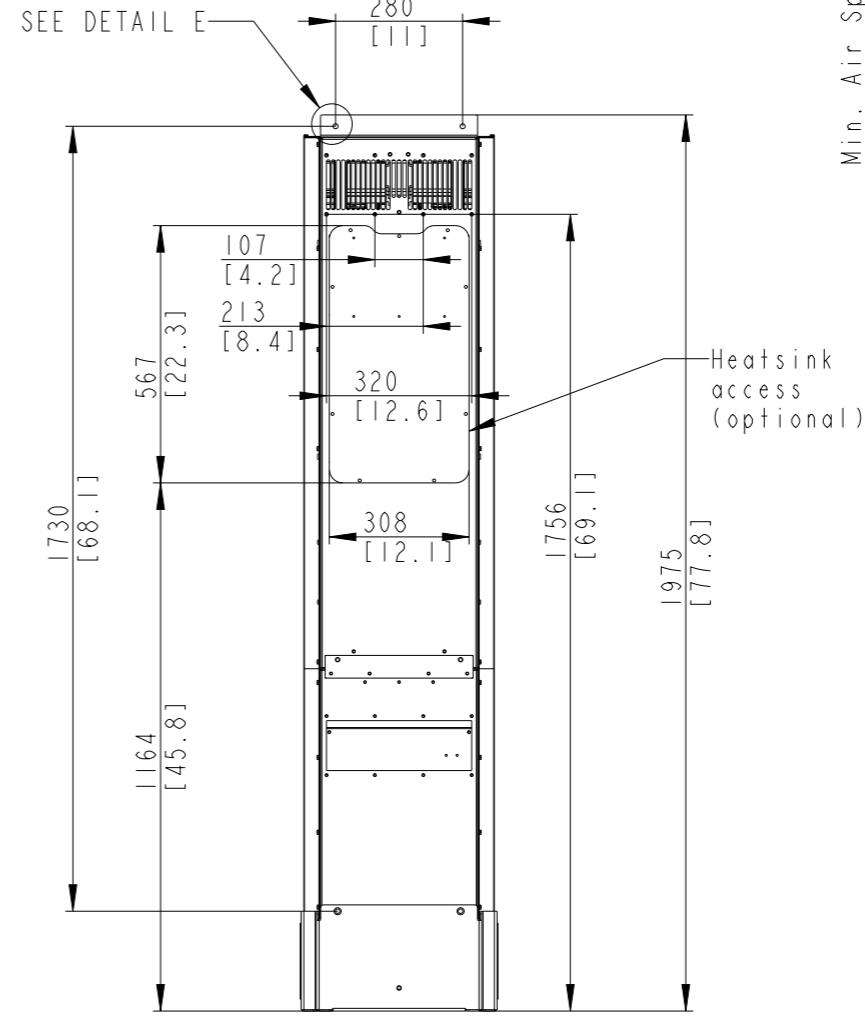
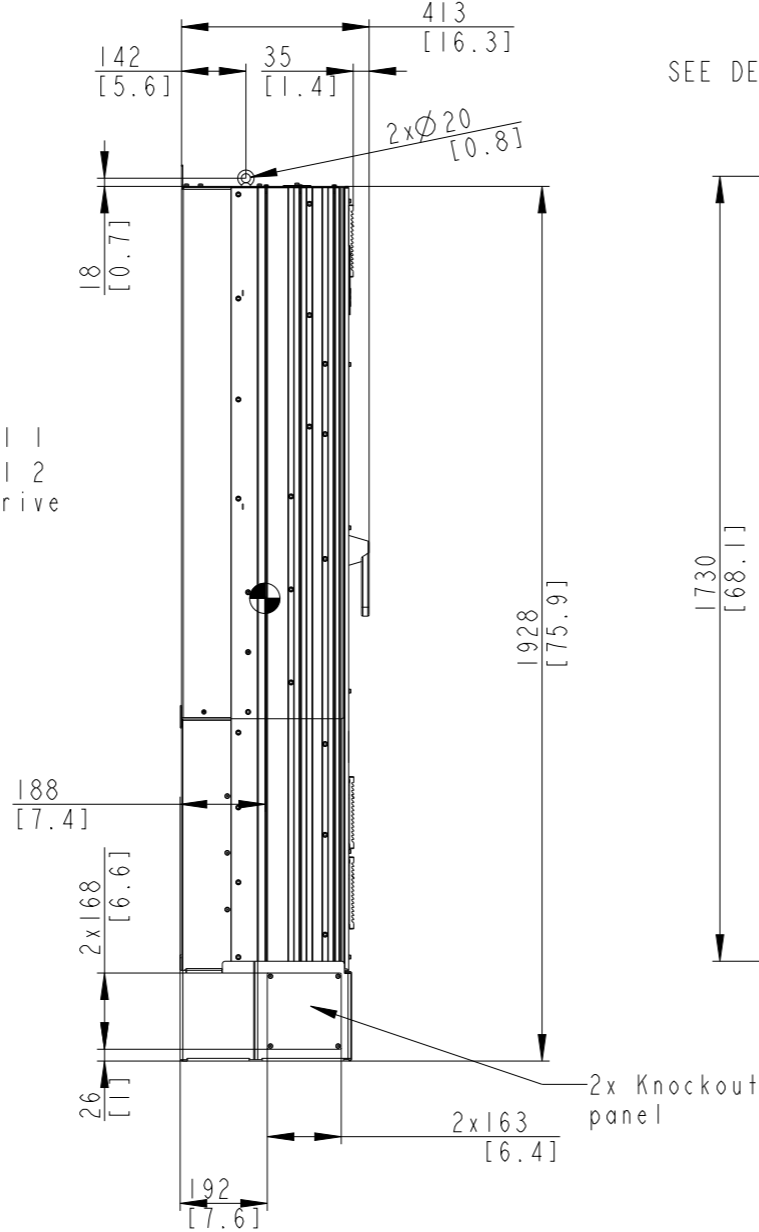
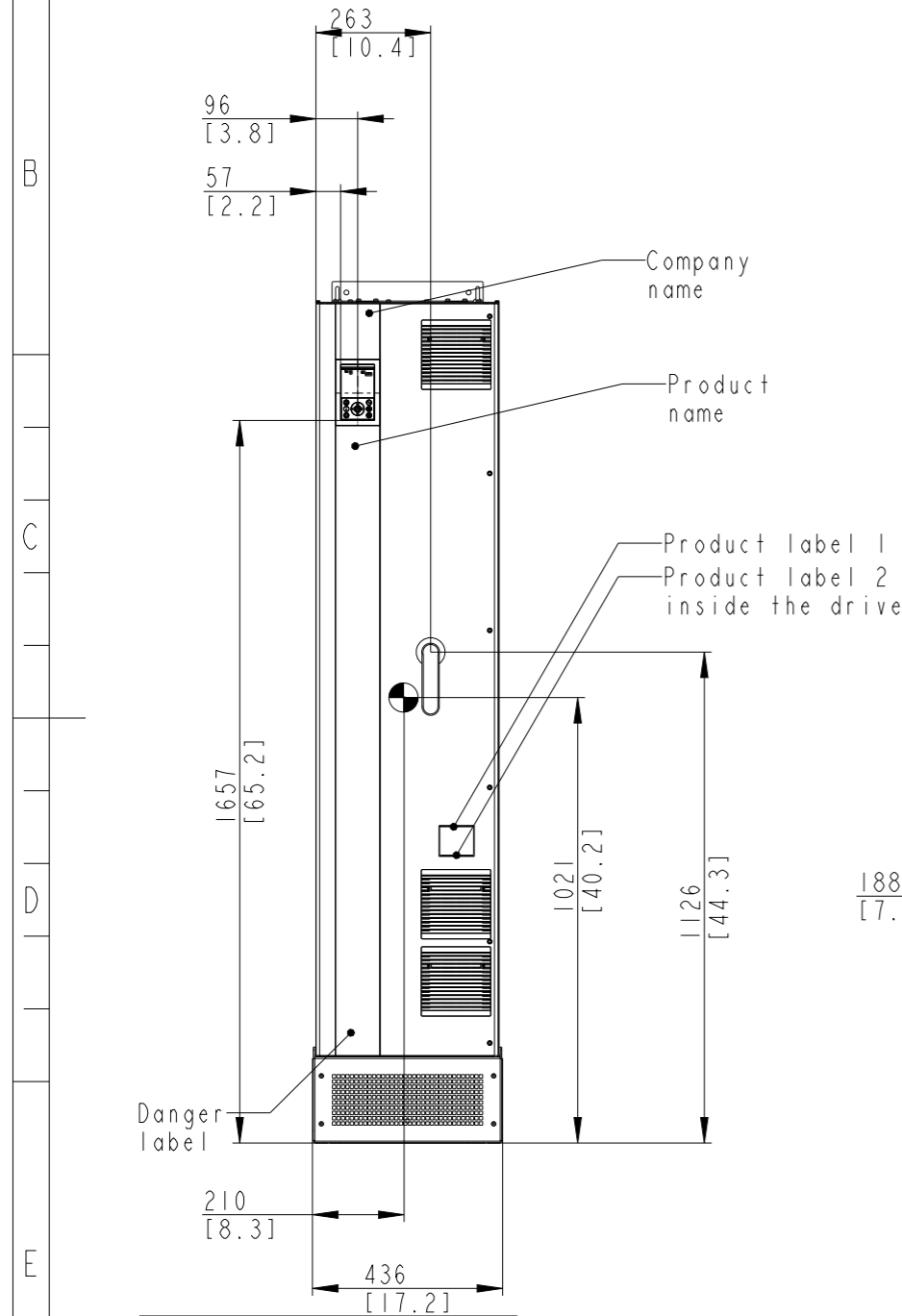
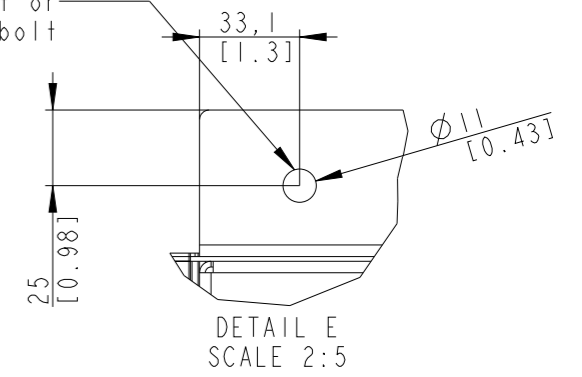
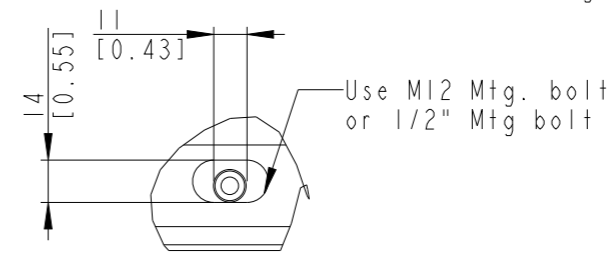
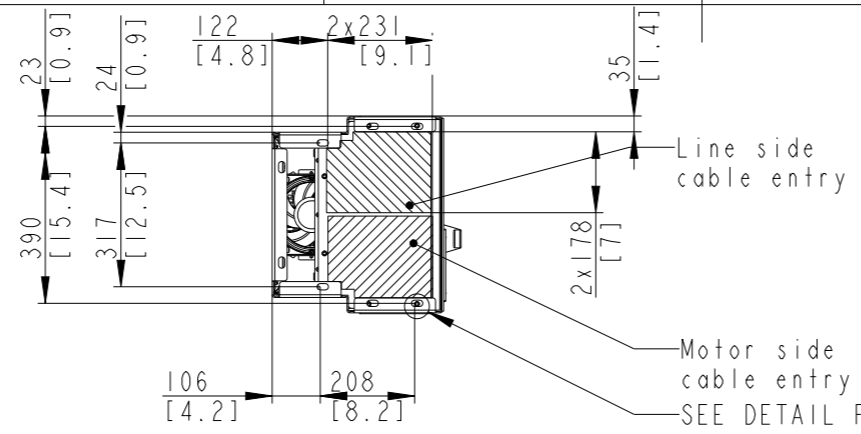


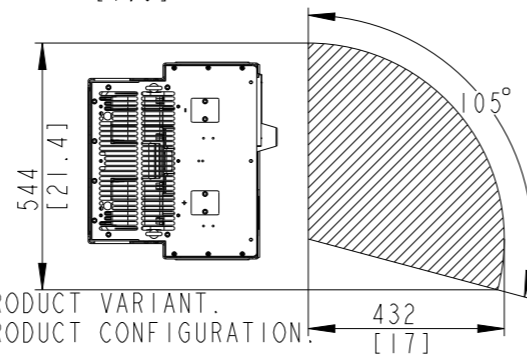
Type	Value
Max Weight	178kg/392lb
IP Class	IP21
UL Type	Type I



1. MAX AIRFLOW (BACKCHANNEL) - 638m<sup>3</sup>/hr (375CFM)
2. MAX AIRFLOW (CABINET) - 204m<sup>3</sup>/hr (120CFM)

Position of connectors	
A	Line
B	Motor
C	Brake / DC
D	Interface X0
E	Interface XI/X2
F	Grounding connections

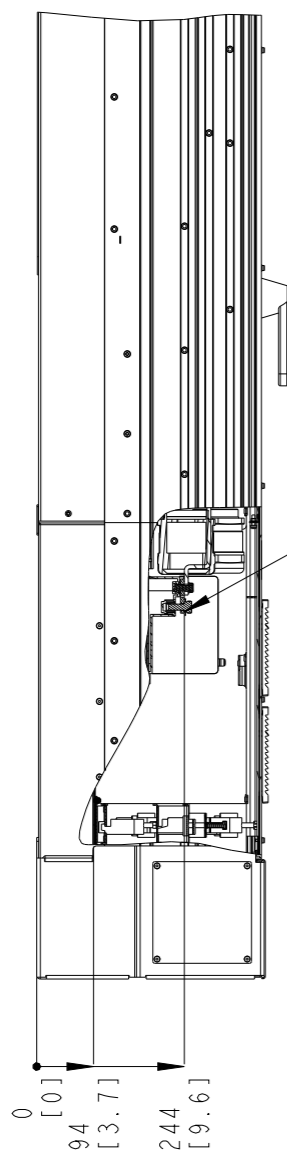
THIS DRAWING SHOWS THE MOST COMMON VERSION OF THIS PRODUCT VARIANT. SMALL DIFFERENCES MAY OCCUR DEPENDING ON THE FINAL PRODUCT CONFIGURATION.



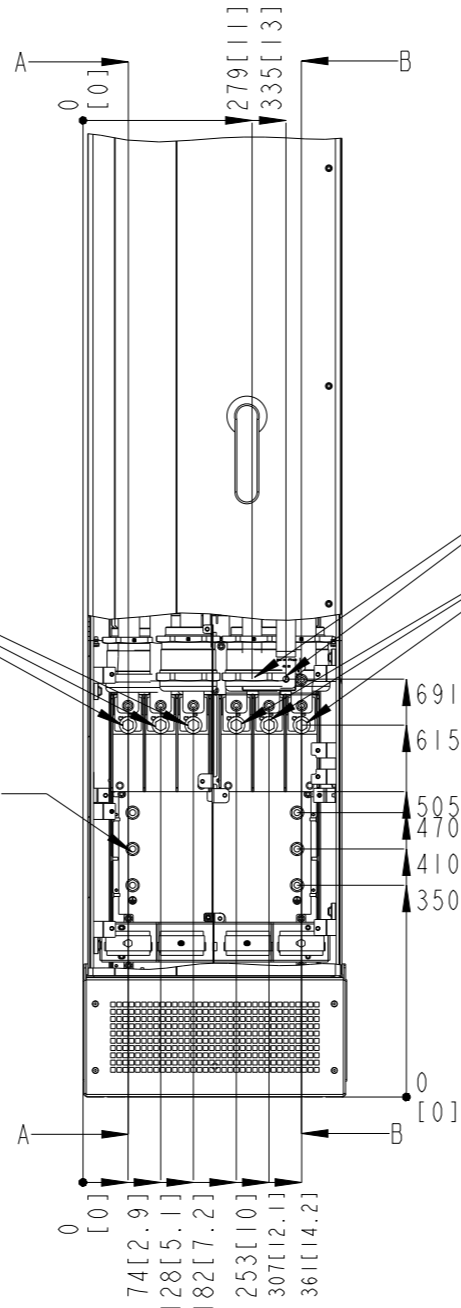
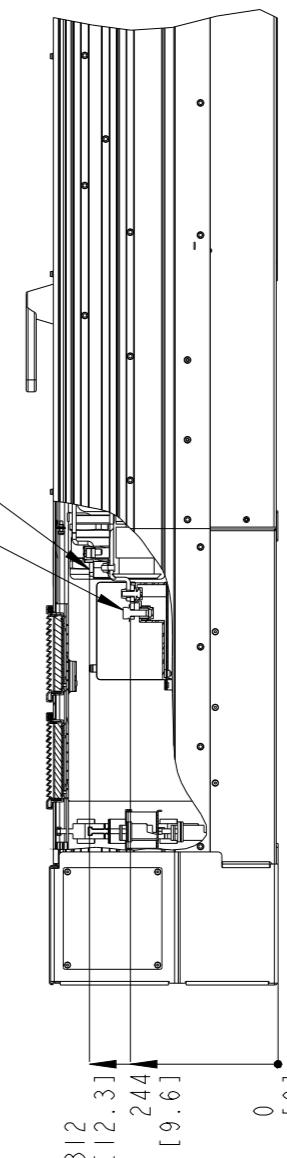
CENTER OF GRAVITY: FOR REFERENCE ONLY, THE PRODUCT CONFIGURATION MAY INFLUENCE THE CG IN ALL THREE AXES.

UNLESS OTHERWISE SPECIFIED THE TOLERANCE IS ±0.4 INCH. ALL DIMENSIONS ARE IN MILLIMETERS [INCH]			FIRST ANGLE PROJECTION	SCALE 1:20	DRAWING SIZE A3	MATERIAL	-
						FINISH	-
						DESCRIPTION	
CHANGED	OB	4/21/25				MCAD FK10c IP21	
DESIGNED	OB	2/3/23			DRAWING NUMBER	178r0017	REV 002
CHECKED					MODEL	MCAD FK10c IP21	SHEET 1 OF 2
PROPERTY OF DANFOSS A/S NORDBOG, DENMARK. TWO OR THREE DIMENSIONAL REPRODUCTION OF CONTENTS TO BE AUTHORIZED BY DANFOSS A/S.							

SECTION A-A  
Line terminals

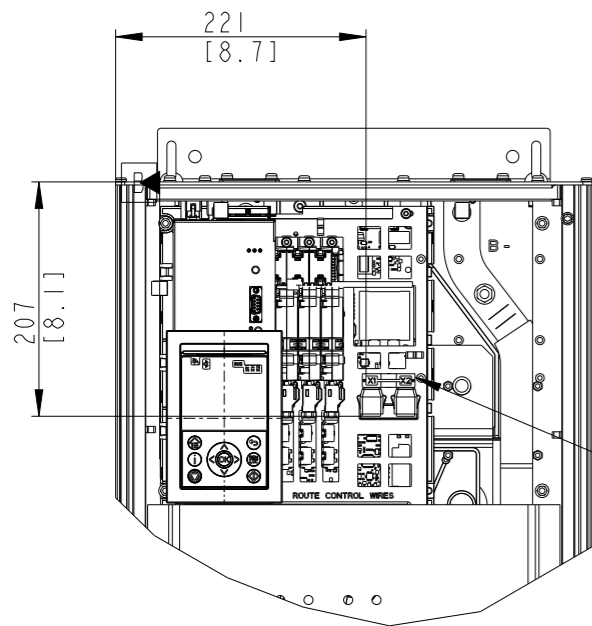


SECTION B-B  
MOTOR/BRAKE/DC Terminals



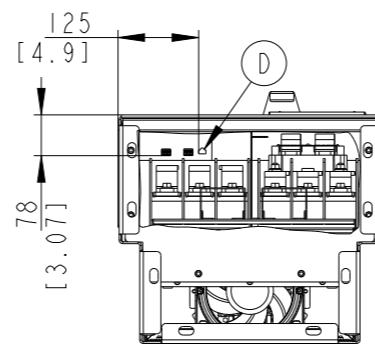
M10x20 stud with nuts (6x)

(F)



X1&X2 Connector

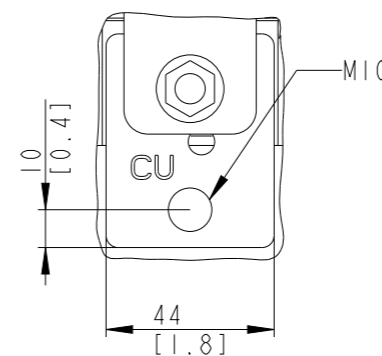
(L1) (L2) (L3) (U) (V) (W)



BOTTOM VIEW

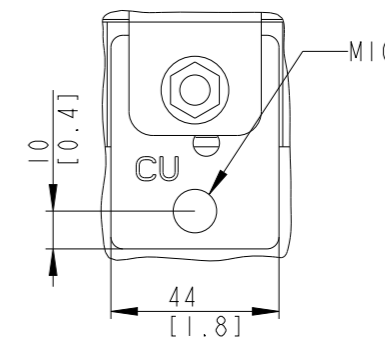
LINE TERMINAL

L1, L2, L3



MOTOR TERMINAL

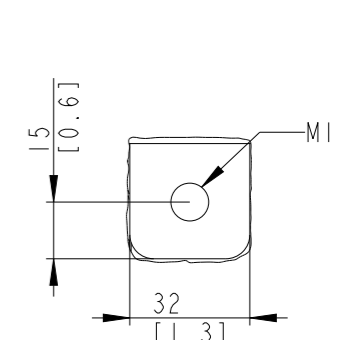
U, V, W



SCALE 1:2

BRAKE / DC TERMINAL

R+, R- DC+, DC-



THIS DRAWING SHOWS THE MOST COMMON VERSION OF THIS PRODUCT VARIANT.  
SMALL DIFFERENCES MAY OCCUR DEPENDING ON THE FINAL PRODUCT CONFIGURATION.

PROPERTY OF DANFOSS A/S NORDBORG, DENMARK. TWO OR THREE DIMENSIONAL REPRODUCTION OF CONTENTS TO BE AUTHORIZED BY DANFOSS A/S.

DRAWING NUMBER	178r0017	REV	002
MODEL	MCAD FK10c IP21	SHEET	2 OF 2