

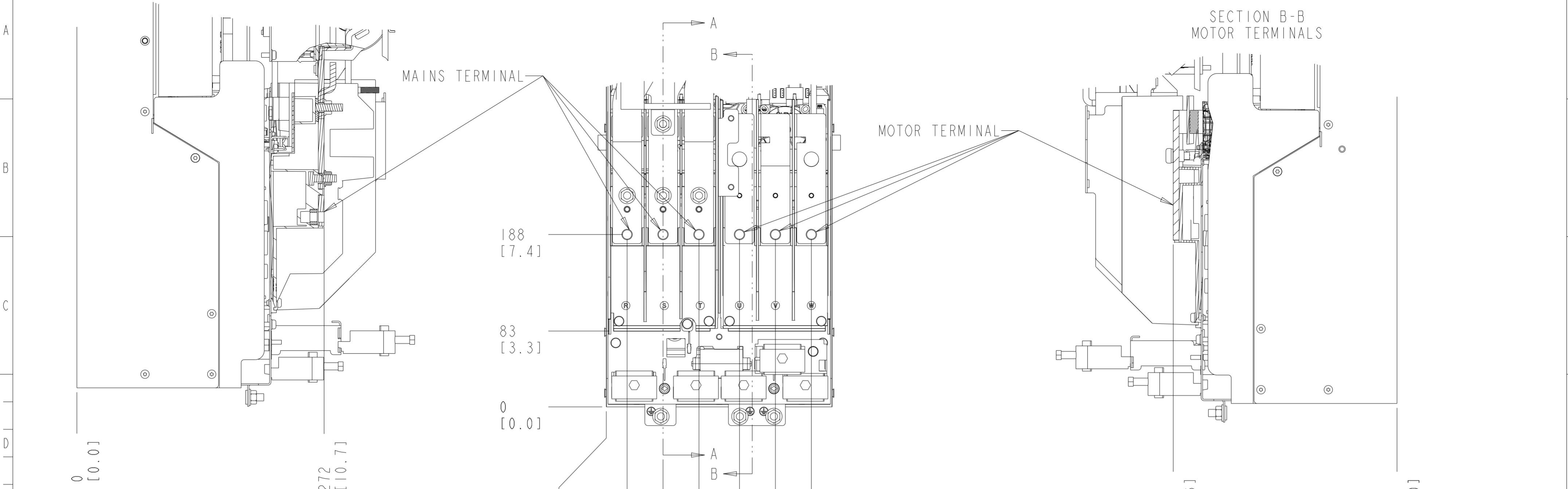
1. MAX AIRFLOW (BACKCHANNEL) - 7 M³/MIN (250 CFM)
2. MAX AIRFLOW (CABINET) - 1.7 M³/MIN (60 CFM)
3. MAX WEIGHT = 62 KG (135 LBS)
4. CENTER OF GRAVITY:
APPROXIMATE LOCATION ONLY, LOCATION MAY VARY BASED ON POWER RATING AND OPTIONS ORDERED.

INTERPRET DIM. & TOL. PER ASME Y14.5M-1994 ALL DIMENSIONS ARE IN MILLIMETERS TOLERANCES UNLESS OTHERWISE SPECIFIED .XX±0.4 .XX±0.2 ≤±0.5		THIRD ANGLE PROJECTION 	SCALE 0.175	SIZE A2	MATERIAL FINISH NA
— PDM CONTROLLED DRAWING — NOT VALID WITHOUT FROZEN DATE IN ID STAMP					
CHANGED	DESIGNED Danfoss				
CONFIDENTIAL: PROPERTY OF DANFOSS A/S NORDBORG, DENMARK. NOT TO BE HANDED OVER TO BE COPIED OR BE USED BY A THIRD PARTY. TWO OR THREE DIMENSIONAL REPRODUCTION OF CONTENTS TO BE AUTHORIZED BY DANFOSS A/S.		DRAWING NUMBER MCAD-FC360-J8-1P20	REV 1 OF 3	P454_D1_PRODUCTION	

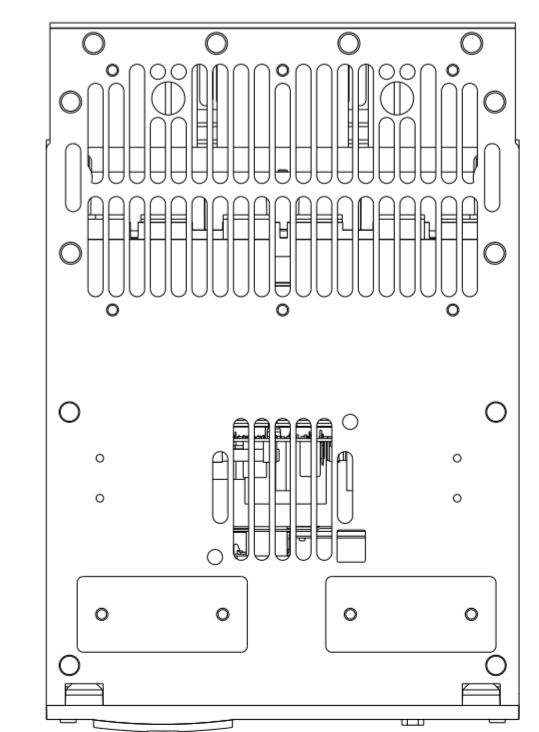
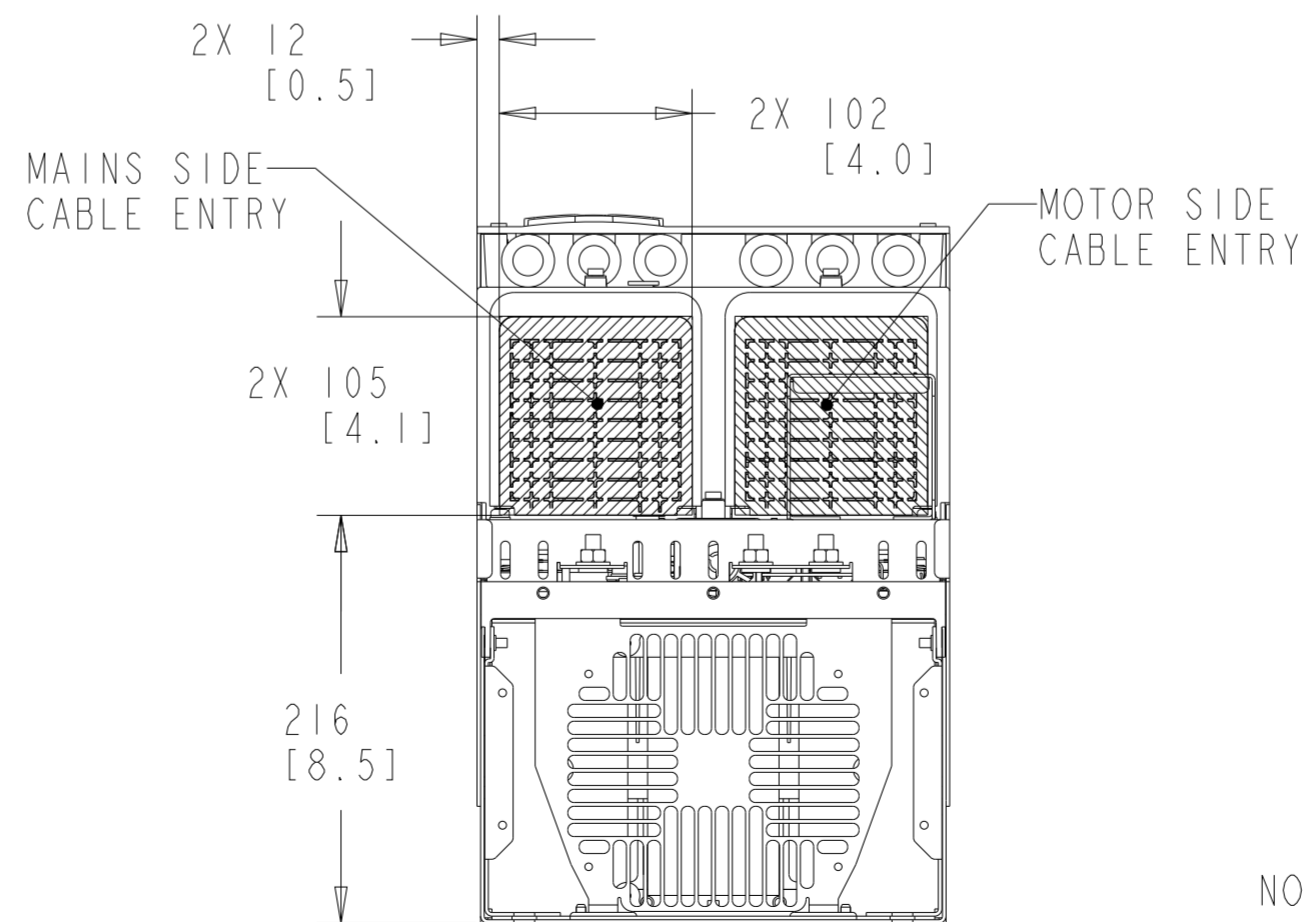
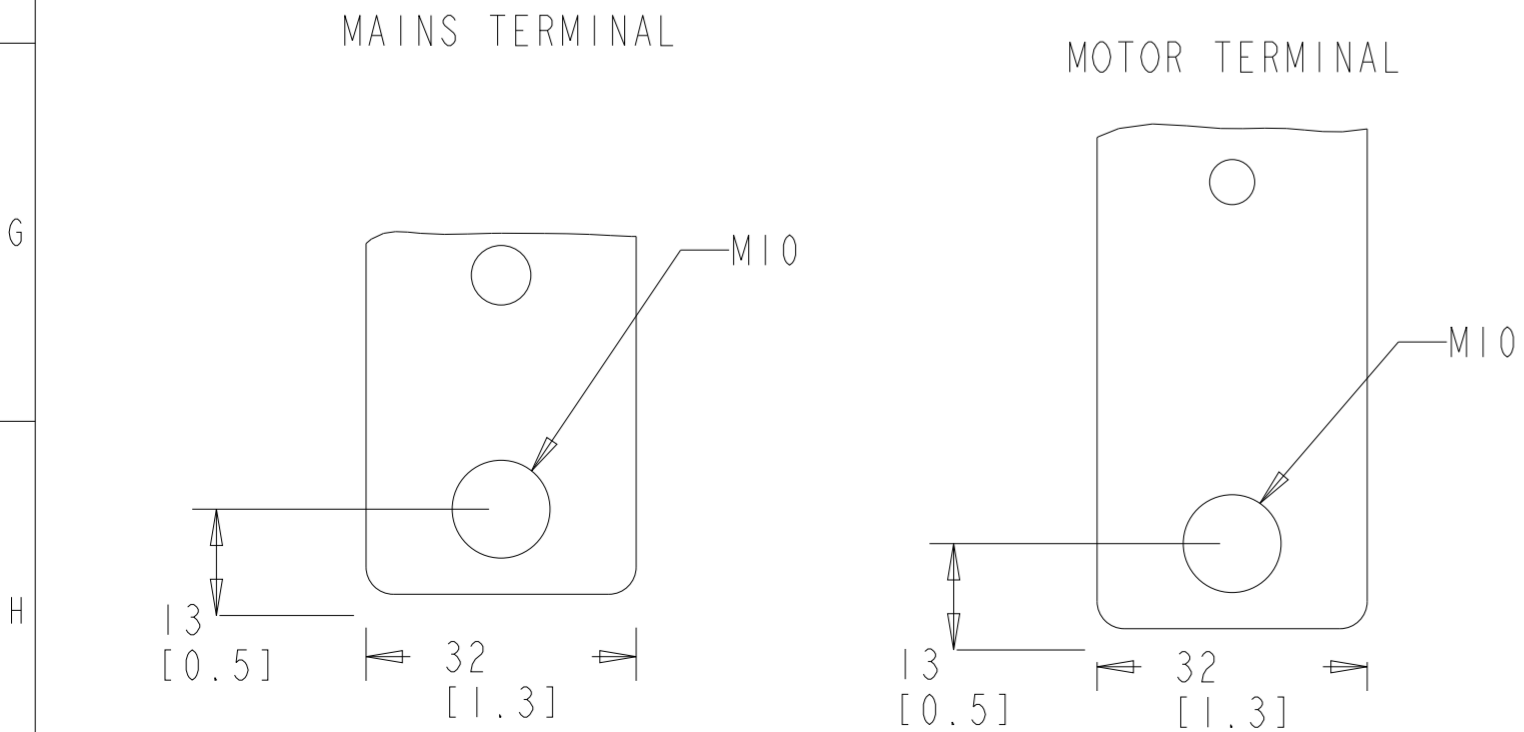
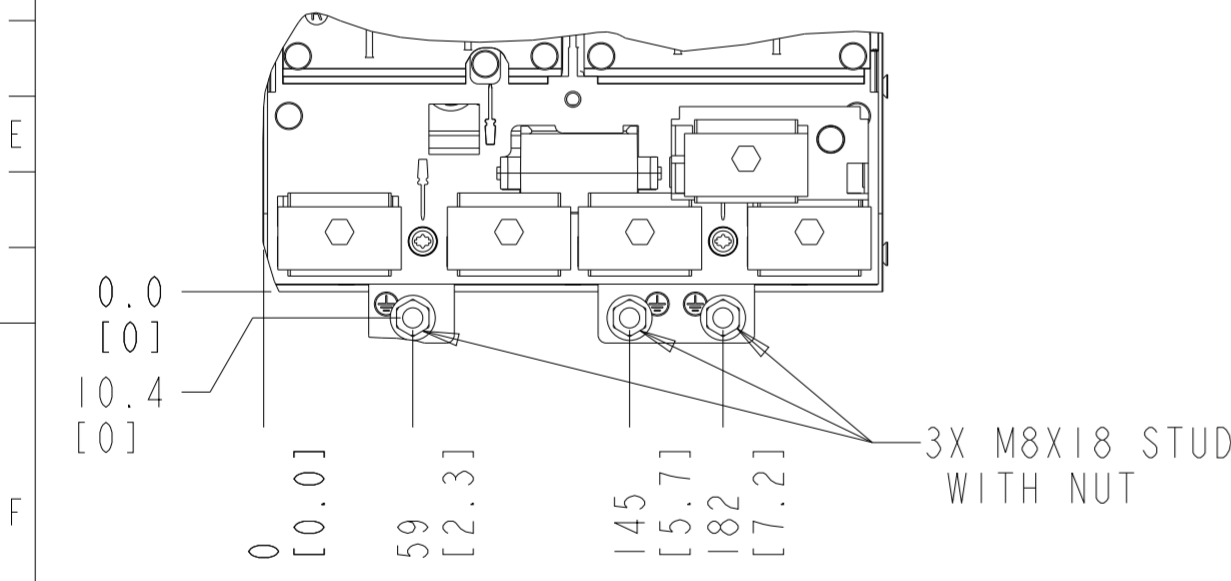
Ⓞ CRITICAL CHARACTERISTICS
 ▽ KEY CHARACTERISTICS
 ○ INSPECTION
 MUST COMPLY TO ROHS DIRECTIVE 2011/65/EU

SECTION A-A
MAINS TERMINALS

SECTION B-B
MOTOR TERMINALS



EARTHING / GROUNDING CONNECTIONS



TOP VIEW

BOTTOM VIEW

NOTES:

1. PLACE CABLES THROUGH MARKED AREAS
2. 95MM² (3/0) MAX WIRE SIZE

DRAWING NUMBER	MCAD-FC360-J8-1P20	REV
MODEL	P454_DI_PRODUCTION	SHEET
		2 OF 3

THE TABLES BELOW MAY BE USED TO CONFIRM THE CORRECT FRAME SIZE AND DRAWING FOR A SPECIFIC DRIVE RATING (POWER AND VOLTAGE). THIS DRAWING IS FOR J8 FRAMES, THE TABLES BELOW IDENTIFY WHICH DRIVES ARE REPRESENTED BY THIS DRAWING.

THE TABLE BELOW CAN BE USED TO DETERMINE THE FRAME SIZE IF THE SPECIFIC MODEL/TYPECODE IS KNOWN.

KW RATED DRIVES			
KW HIGH OVERLOAD/NORMAL OVERLOAD	90/110	110/132	132/160
400V	J8	J8	J8

PLATFORM	VOLTAGE	MODEL/TYPECODE	FRAME(IP20)
FC-360	T4	FC-360H90KT4	J8
		FC-360H110T4	
		FC-360H132T4	
		FC-360Q110T4	
		FC-360Q132T4	
		FC-360Q160T4	