

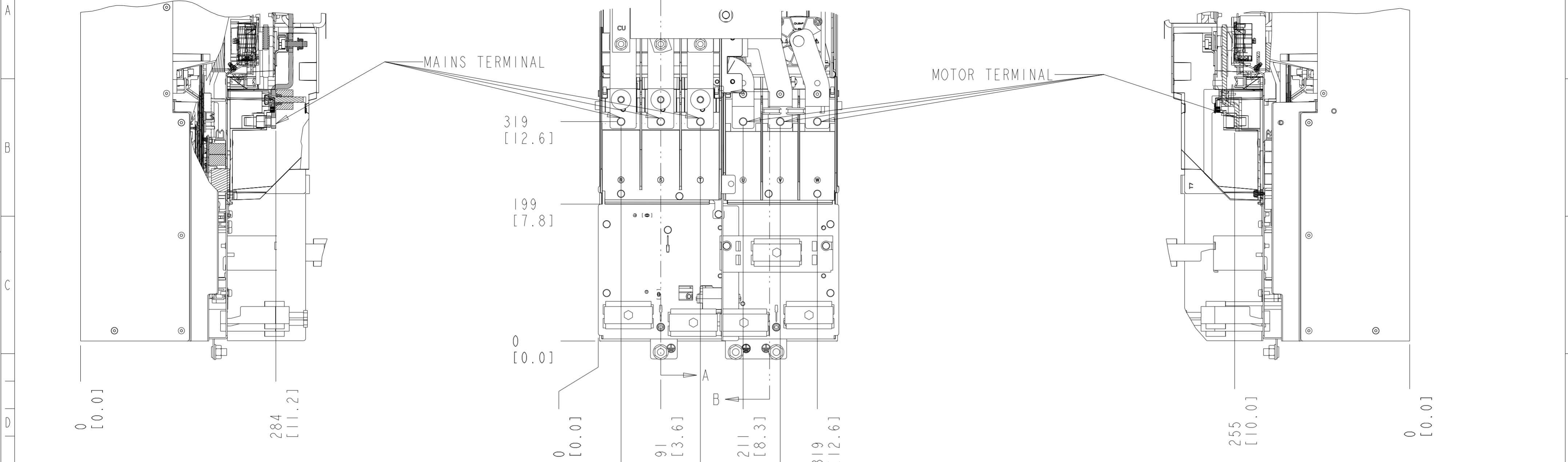
1. MAX AIRFLOW (BACKCHANNEL) - 14 M<sup>3</sup>/MIN (500 CFM)
2. MAX AIRFLOW (CABINET) - 3.4 M<sup>3</sup>/MIN (120 CFM)
3. MAX WEIGHT = 125 KG (275 LBS)
4. CENTER OF GRAVITY:  
APPROXIMATE LOCATION ONLY, LOCATION MAY VARY BASED ON POWER RATING AND OPTIONS ORDERED.

Ⓞ CRITICAL CHARACTERISTICS  
 ▽ KEY CHARACTERISTICS  
 ○ INSPECTION  
 MUST COMPLY TO ROHS DIRECTIVE 2011/65/EU

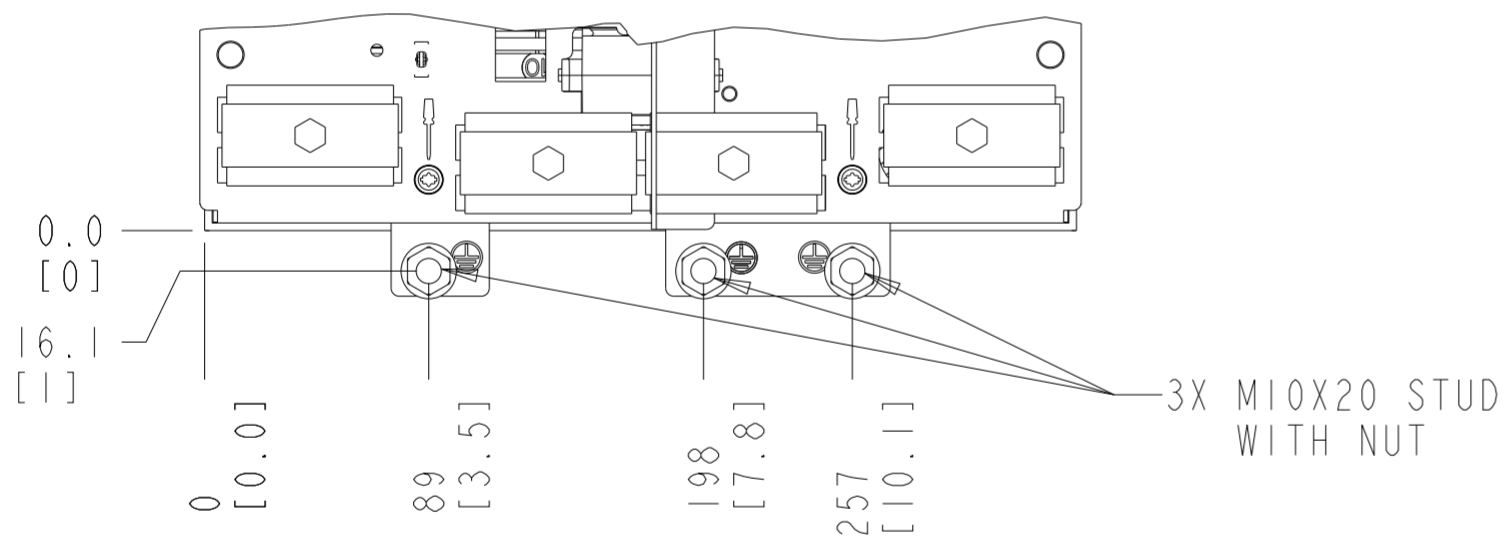
INTERPRET DIM. & TOL. PER ASME Y14.5M-1994 ALL DIMENSIONS ARE IN MILLIMETERS TOLERANCES UNLESS OTHERWISE SPECIFIED .X±0.8 .XX±0.50 ≤ ±1.0		THIRD ANGLE PROJECTION 	SCALE 0.150	SIZE A2	MATERIAL N/A
— PDM CONTROLLED DRAWING — NOT VALID WITHOUT FROZEN DATE IN ID STAMP				FINISH N/A	
CHANGED	DESIGNED Danfoss			CHECKED 2026-05-14	DESCRIPTION MCAD-FC360-J9-1P20
CONFIDENTIAL: PROPERTY OF DANFOSS A/S NORDBORG, DENMARK. NOT TO BE HANDED OVER TO BE COPIED OR BE USED BY A THIRD PARTY. TWO OR THREE DIMENSIONAL REPRODUCTION OF CONTENTS TO BE AUTHORIZED BY DANFOSS A/S.					
DRAWING NUMBER MCAD-FC360-J9-1P20				REV 1 OF 3	SHEET 1 OF 3

SECTION A-A  
MAINS TERMINALS

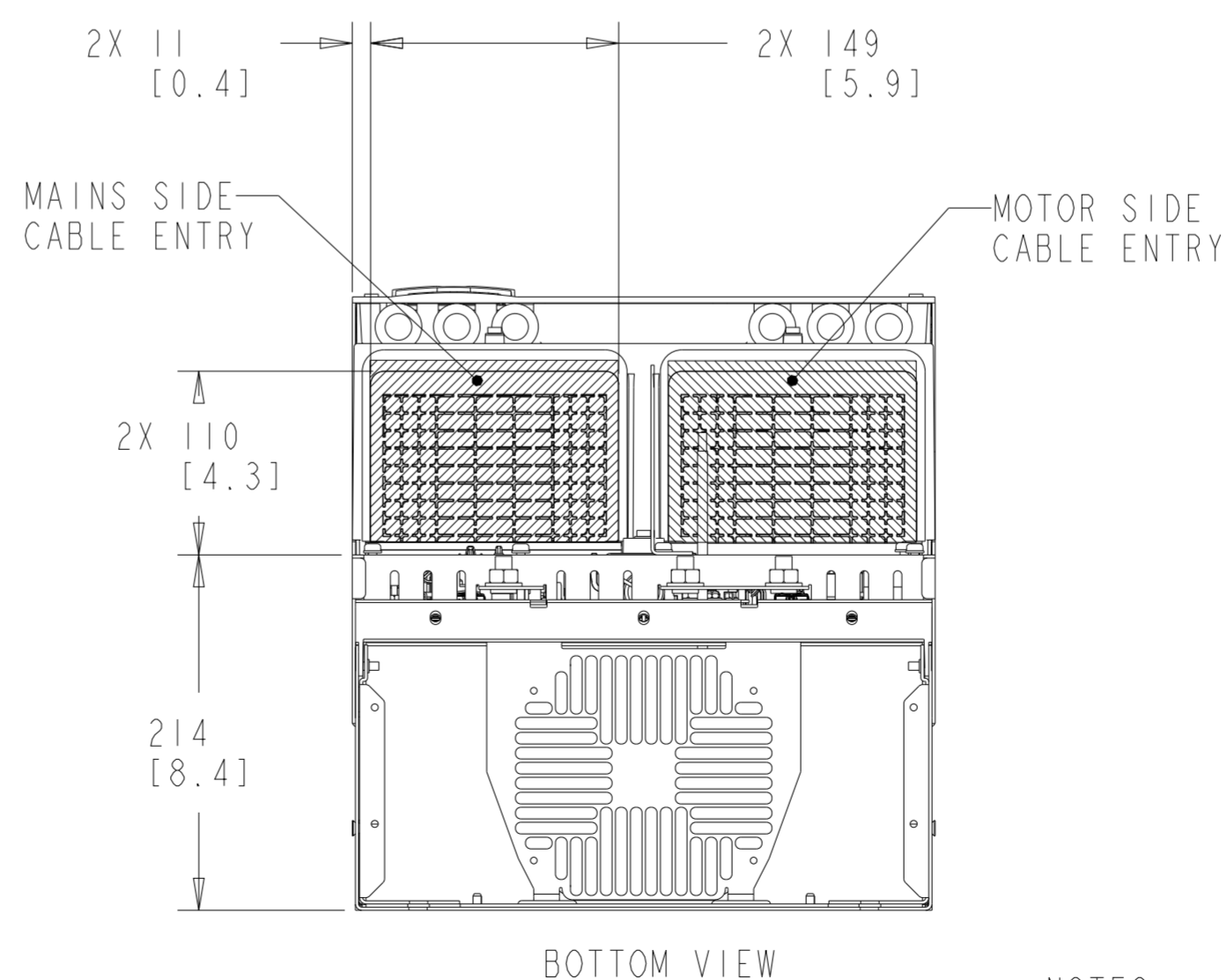
SECTION B-B  
MOTOR TERMINALS



EARTHING / GROUNDING CONNECTIONS

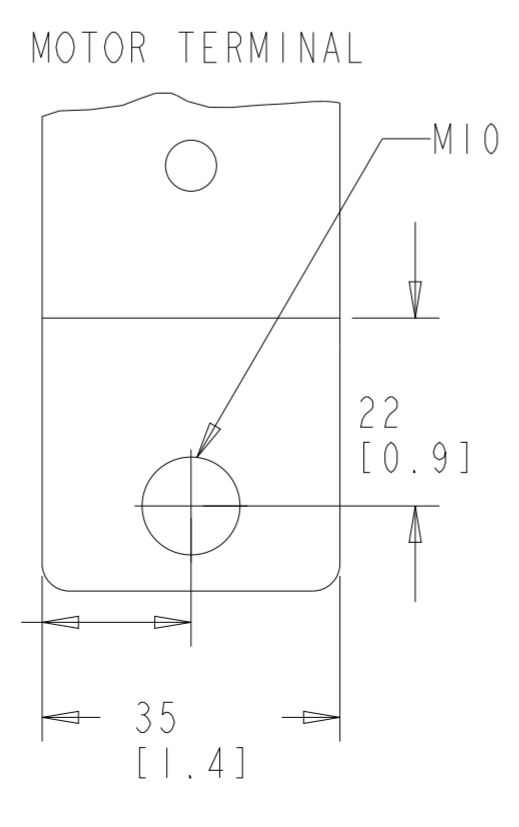
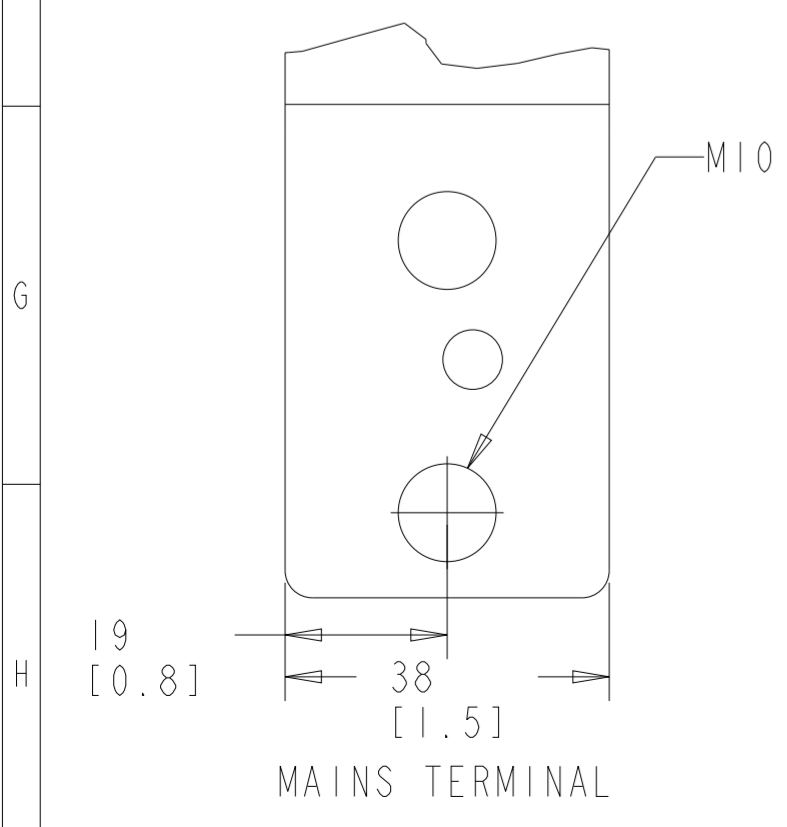
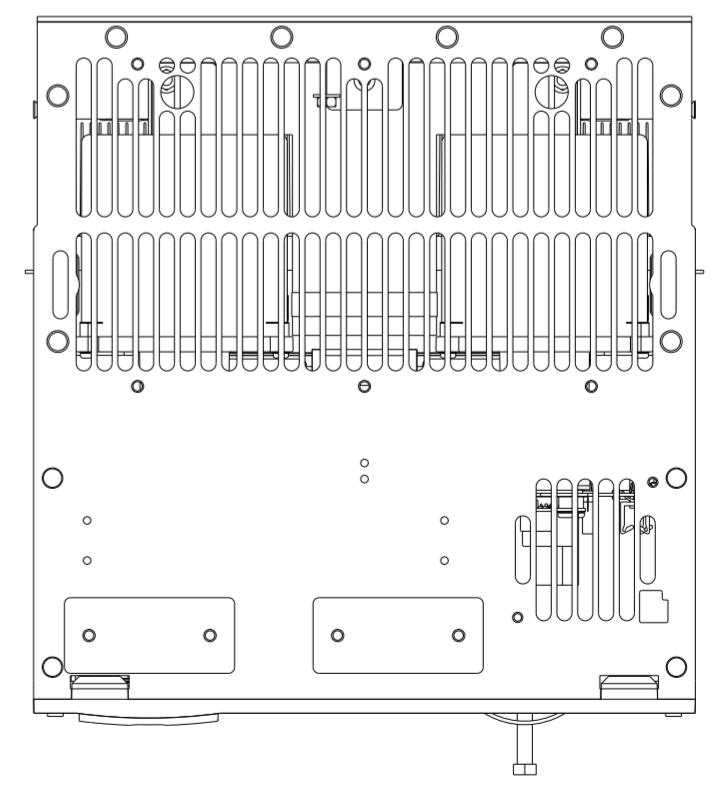


3X M10X20 STUD WITH NUT



BOTTOM VIEW

TOP VIEW



NOTES:

1. PLACE CABLES THROUGH MARKED AREAS
2. 185MM<sup>2</sup> (400MCM) MAX WIRE SIZE

DRAWING NUMBER	MCAD-FC360-J9-1P20	REV
MODEL	P454_D2_PRODUCTION	SHEET 2 OF 3

THE TABLES BELOW MAY BE USED TO CONFIRM THE CORRECT FRAME SIZE AND DRAWING FOR A SPECIFIC DRIVE RATING (POWER AND VOLTAGE). THIS DRAWING IS FOR D4H FRAMES, THE TABLES BELOW IDENTIFY WHICH DRIVES ARE REPRESENTED BY THIS DRAWING.

KW RATED DRIVES			
KW HIGH OVERLOAD/NORMAL OVERLOAD	160/200	200/250	250/315
400V	J9	J9	J9

THE TABLE BELOW CAN BE USED TO DETERMINE THE FRAME SIZE IF THE SPECIFIC MODEL/TYPECODE IS KNOWN.

PLATFORM	VOLTAGE	MODEL/TYPECODE	FRAME(IP20)
FC-360	T4	FC-360H160T4	J9
		FC-360H200T4	
		FC-360H250T4	
		FC-360Q200T4	
		FC-360Q250T4	
		FC-360Q315T4	