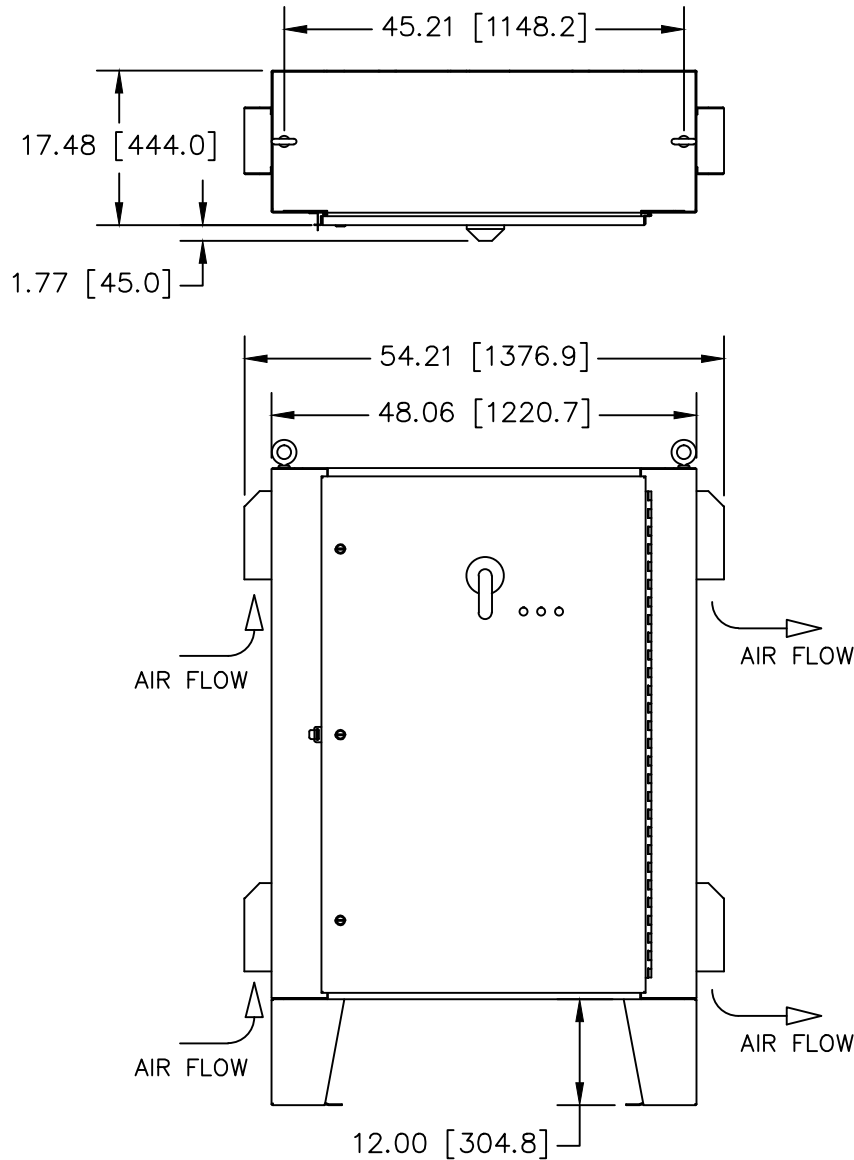
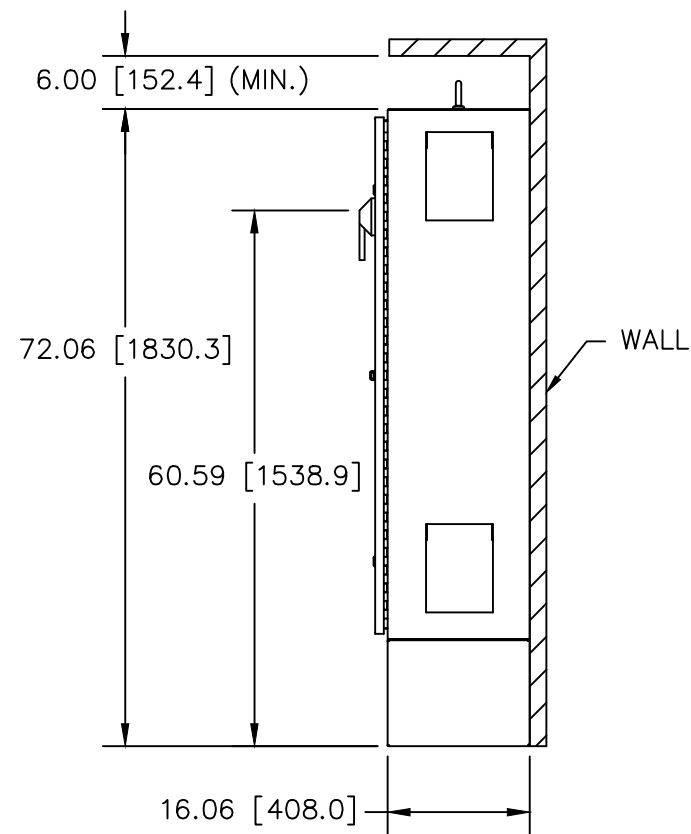


DIMENSIONS ARE IN INCHES [MILLIMETERS]




HORSEPOWER VALUES			
208V	230V	460V	600V
40HP - 60HP	40HP - 60HP	100HP - 125HP	100HP - 125HP

1. ESTIMATED WEIGHT: 450 LBS
2. FRONT CLEARANCE OF 39.00 [990.6] REQUIRED FOR DOOR, LOCAL CODES MAY REQUIRE ADDITIONAL CLEARANCE

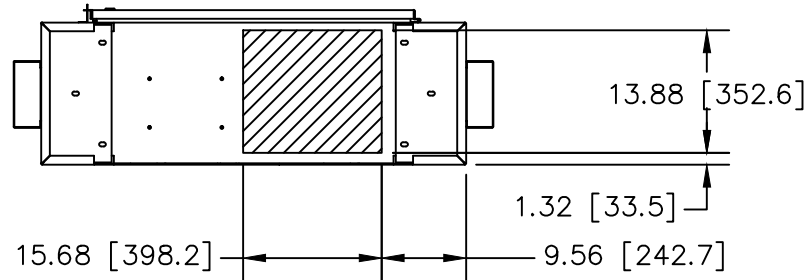


DIMENSIONS ARE NOT FOR MANUFACTURING PURPOSES

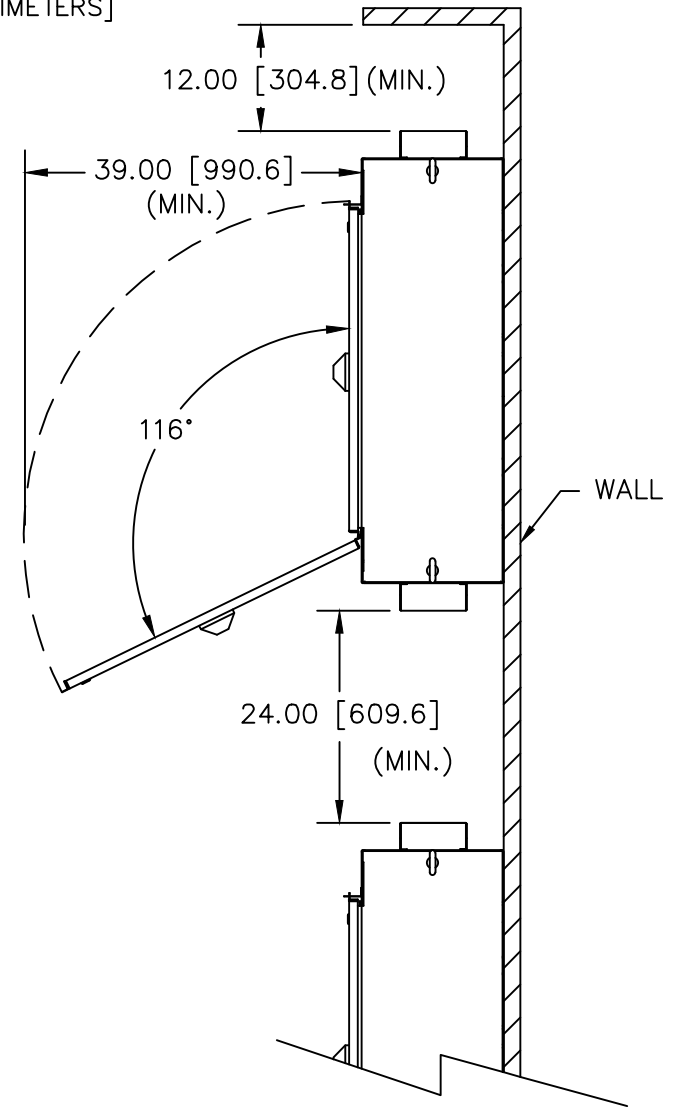
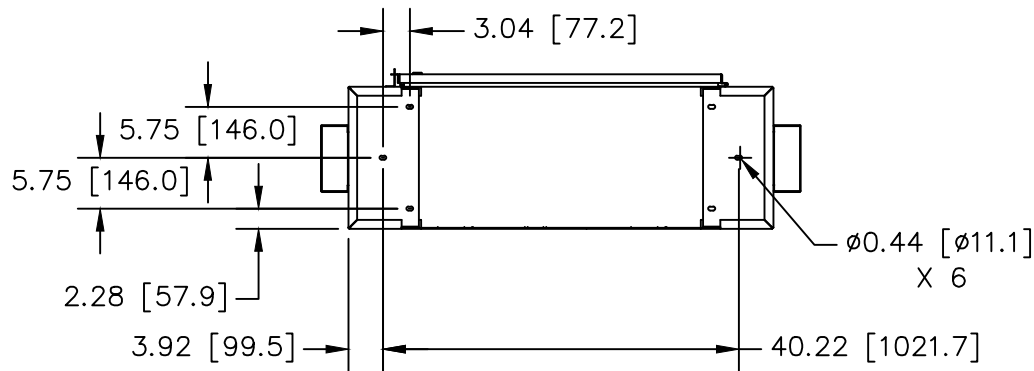
B			<p align="center">- NOTICE -</p> <p>THIS DOCUMENT CONTAINS PROPRIETARY INFORMATION OF DANFOSS DRIVES. IT IS LOANED BY DANFOSS DRIVES SUBJECT TO THE CONDITIONS THAT IT AND THE INFORMATION EMBODIED THEREIN SHALL BE USED ONLY FOR RECORD AND REFERENCE PURPOSES, SHALL NOT BE USED OR CAUSED TO BE USED IN ANY WAY PREJUDICIAL TO THE INTERESTS OF DANFOSS DRIVES, SHALL NOT BE REPRODUCED OR COPIED IN WHOLE OR IN PART, OR DISCLOSED TO ANYONE WITHOUT THE DIRECT WRITTEN PERMISSION OF DANFOSS DRIVES AND SHALL BE RETURNED UPON REQUEST.</p>	DRN	NAME					
A				DTM	INSTALLATION / DIMENSIONAL DRAWING NEMA 3R					
DR	ECNSP11078	09/11		APR	MODEL		VLT	PAGE 1 OF 2	SIZE A	DWG NO. 174N7892
REV	ECN	DATE		DTM						

DIMENSIONS ARE IN INCHES [MILLIMETERS]

CONDUIT ENTRY AREA  
(BOTTOM VIEW)




MOUNTING DIMENTIONS  
(BOTTOM VIEW)



HORIZONTAL SPACE REQUIREMENTS  
(TOP VIEW)

DIMENSIONS ARE NOT FOR MANUFACTURING PURPOSES

B			THIS DOCUMENT CONTAINS PROPRIETARY INFORMATION OF DANFOSS DRIVES. IT IS LOANED BY DANFOSS DRIVES SUBJECT TO THE CONDITIONS THAT IT AND THE INFORMATION EMBODIED THEREIN SHALL BE USED ONLY FOR RECORD AND REFERENCE PURPOSES, SHALL NOT BE USED OR CAUSED TO BE USED IN ANY WAY PREJUDICIAL TO THE INTERESTS OF DANFOSS DRIVES, SHALL NOT BE REPRODUCED OR COPIED IN WHOLE OR IN PART, OR DISCLOSED TO ANYONE WITHOUT THE DIRECT WRITTEN PERMISSION OF DANFOSS DRIVES AND SHALL BE RETURNED UPON REQUEST.	DRN	NAME INSTALLATION / DIMENSIONAL DRAWING NEMA 3R					
A				DTM						
DR	ECNSP11078	09/11		APR	MODEL VLT		PAGE 2 OF 2	SIZE A	DWG NO.	174N7892
REV	ECN	DATE		DTM						