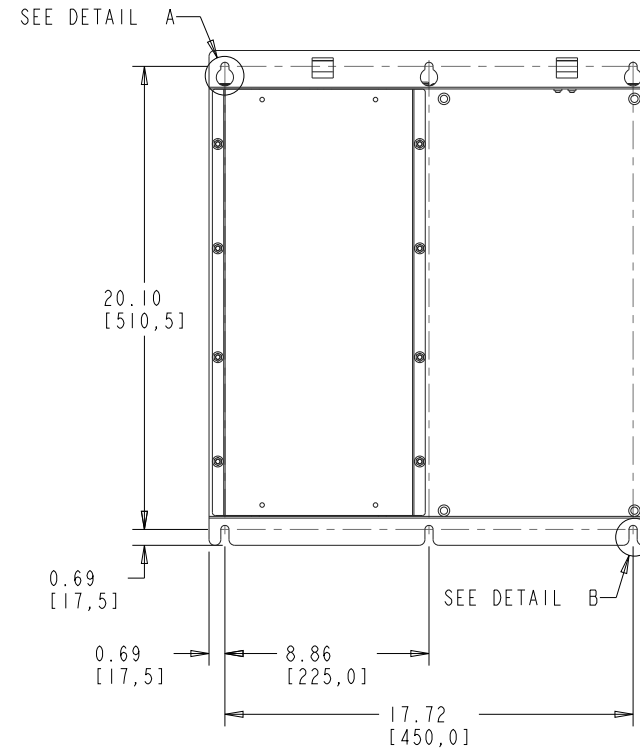
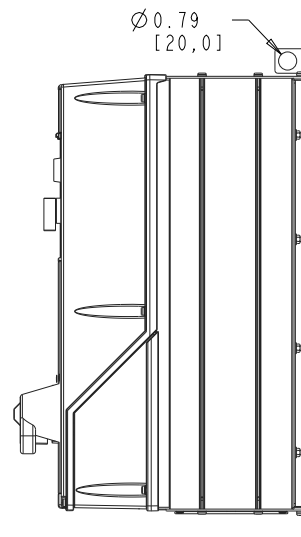
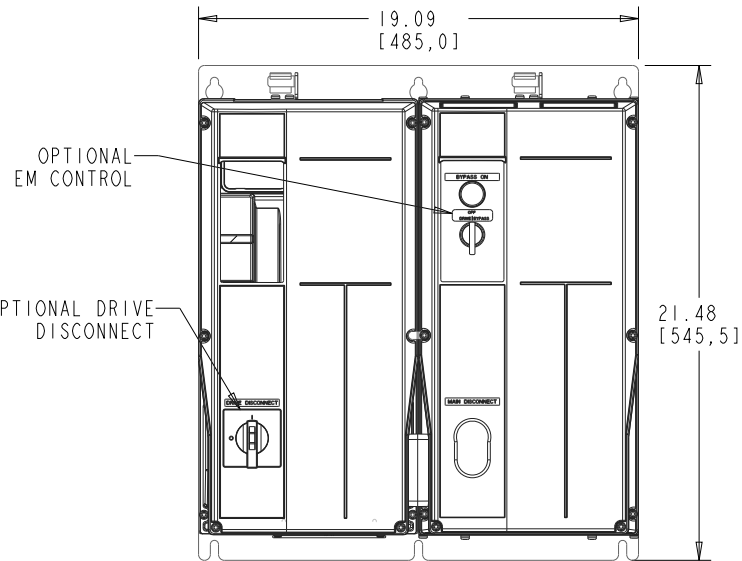


4

3

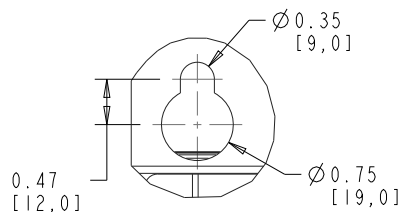
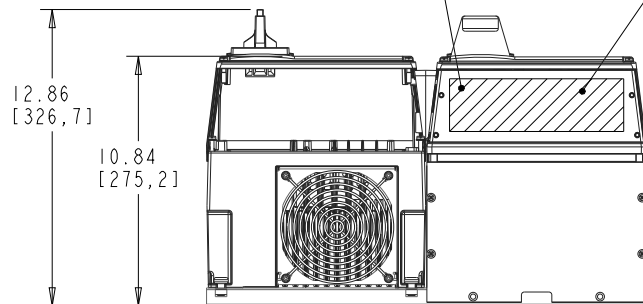
2

1

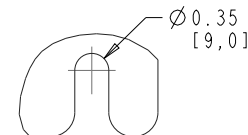


CONTROL CONDUIT ENTRY  
FOR NEMA TYPE 12 UNITS USE NEMA  
TYPE 12 CONDUITS AND HUBS.

POWER CONDUITS ENTRY/EXIT



DETAIL A



DETAIL B

D UNIT APPROXIMATE WEIGHT: 84 Lbs [38.1 Kg]

CLEARANCE REQUIREMENT FOR AIR FLOW COOLING:

THE UNIT MUST BE INSTALLED VERTICALLY  
WITH THE MINIMUM CLEARANCE OF  
3.94" [100.0mm] ON THE TOP AND BOTTOM.  
ALL UL NEMA TYPE 1/IP21 AND  
NEMA TYPE 12/IP54 UNITS  
MAY BE MOUNTED SIDE BY SIDE WITH NO  
MINIMUM SIDE CLEARANCE.

FRAME SIZE BI		
VOLTAGE	HP	KW
208/230	7.5-10	5.5-7.5
460/600	15-25	11-18.5

- NOTICE -

THIS DOCUMENT CONTAINS PROPRIETARY INFORMATION OF DANFOSS DRIVES.  
IT IS LOANED BY DANFOSS DRIVES SUBJECT TO THE CONDITIONS THAT IT AND THE  
INFORMATION EMBODIED THEREIN SHALL BE USED ONLY FOR RECORD AND REFERENCE  
PURPOSES, SHALL NOT BE USED OR CAUSED TO BE USED IN ANY WAY PREJUDICIAL TO THE  
INTERESTS OF DANFOSS DRIVES, SHALL NOT BE REPRODUCED OR COPIED IN WHOLE  
OR IN PART OR DISCLOSED TO ANYONE WITHOUT THE DIRECT WRITTEN PERMISSION OF  
DANFOSS DRIVES, AND SHALL BE RETURNED UPON REQUEST.

LATEST E.C.N. NO.:

SP11114

E.C.N. PRO-E ENTRY BY/DATE:

JMH 01/11/12

PRO-E ENTRY BY/DATE:

KD 2/21/07

DESIGNED BY/DATE:

KD 2/21/07

APPROVAL:

PLOT SCALE:

NONE

CHECKED BY/DATE:

MFG. APPROVAL BY/DATE:

ENG. APPROVAL BY/DATE:

PRO-E FILE:

APU\_BI\_MAIN

**Danfoss**

DANFOSS DRIVES  
4401 N. BELL SCHOOL RD. LOVES PARK, ILLINOIS 61111 USA  
(815) 639-8000 FAX (815) 639-8000

TITLE:

DWG, REF, SUBMITTAL, BI T2

SHEET:

1

OF:

1

DRAWING NO.:

176U8472

REV.:

D

4

3

2

1